

Bevel-Mill® Plate Bevelers

Heck's patented line of Beveling machines provide a more effective method of beveling over slow grinding and torch cutting.

No Vibration - No Heat - No Fumes - No Dust

- Ideal for weld preparation
- Clean burr - free edges
- Adjustable depth of cut
- Variable angle 15° - 45°
- Specials available for 60° - 90° beveling
- Easy to operate
- Self supporting on the work piece
- Pipe Beveling attachment included



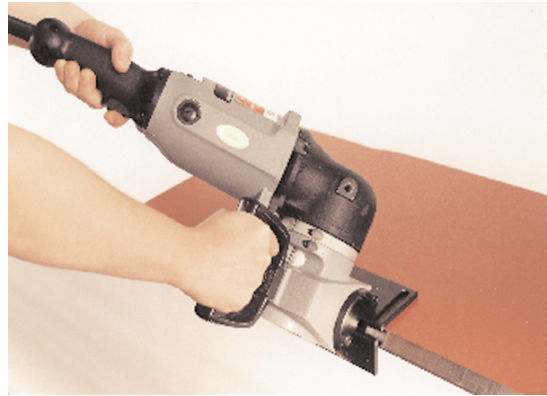
Model 7000 / 8000

- "Work Horse"
- Uses specially design Baldor Motors
- Faster feed rates



Model 9000

- Worlds Largest Hand Held Beveler



Model 5000

- Light weight
- Double insulated
- Gear drive
- Variable Speed (optional)



Model 4000

- Light weight
- Double insulated
- Gear drive
- Variable Speed (optional)



Model S186E

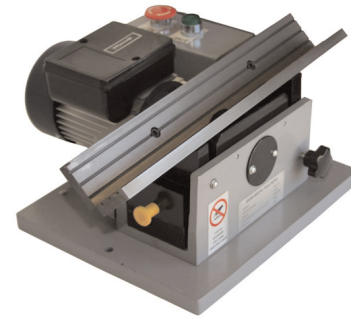
- Bevels both straight & contoured edges easily
- Bevel circles & pipe
- Great for cleaning up holes and cut outs in plate
- Cutter diameter 1 1/4"

Bevel-Mill® Plate Bevelers

	3000	5000	4000	7000	8000	S186E	9000
Maximum Bevel (B)	3/16"	5/6"	3/4"	3/8"	7/8"	3/16"	1 3/16"
Min. Bevel	0	0	0	0	0	0	0
Min work piece thickness	1/8"	1/8"	1/8"	1/8"	1/8"	3/16"	1/8"
Bevel angle	15-45°	15-45°	15-45°	15-45°	15-45°	30° or 40°	15-45°
V-Block Length	8"	8"	8"	8"	8"		9"
Weight	14 lbs	19 lbs	22 lbs	26 lbs	36 lbs	5 lbs	50 lbs
Number of inserts	5	5	10	5	10	3	10
Power	pneumatic	2 hp 110 volt	2 hp 110 volt	1/2 hp 110 volt	1 hp 110 volt		1-1/2 hp 110 volt
Radius inserts for corner rounding	No	Yes	No	Yes	Yes	No	No

Bevel-Mill Bench Top Models

- Deburr-Chamfer edges easily
- Uses standard carbide inserts
- Adjustable depth of cut
- Use on any steel or aluminum & stainless steel



Model BB125

- Fixed Angle 45°



Model VA-400

- Produce Bridgeport Mill quality finishes fast without any set-up
- Variable angle
- Adjustable V-Block gap for thin materials



Model BB27

- Chamfer or deburr any material from plastic to hardened steel
- Ideal for finish chamfers or machined parts
- One pass deburring or chamfering
- Easily adjustable depth of cut
- Uses a standard abrasive flap disc
- Cast aluminum frame
- Ground cast iron table

Bevel-Mill Bench Top Models

Bevel-Mill	VA400	BB125	Model BB27
Min. work piece thickness	1/16" - 1.75mm	1/8" - 3.2mm	3/16" - 4.7mm
Minimum bevel	0	0	0
Maximum bevel (B)	3/16" - 4.7mm	1/8" - 3.24mm	3/16" - 4.7mm
Bevel angle	15-45°	fixed 45°	fixed 45°
V-block length	18" - 454mm	12" -303mm	12" - 303mm
Number of inserts	6	6	flap disk
Motor	1hp 110 volt	1/2hp 110 volt	1/2hp 110 volt
Weight	70 lbs - 31kg	50lbs - 22kg	65 lbs - 30kg

Power Feed Bevelers

Rigid mount, quick change angle rollers eliminates complicated angle changes. Pro 6-C, Pro12-C, Pro-12, Pro-20 are supplied with cylindrical bottom roller for performing 30° chamfers, By fitting tapered rollers, available on request, the angles can vary from 20° to 45°. A wide range of cutters are available to process material of different hardness, from aluminum to stainless steel.

Models 12-G and 21-G are Variable angle. Machines simply rotate a hand wheel for the need Bevel-angle.

PRO-SERIES – High Production Beveling

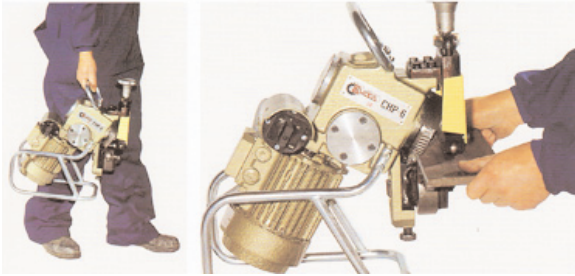
- Self Propelled
- Hands Free Beveling
- Variable Angle
- Simple, Quiet Operation
- Shear Type Cutting
- Sharpenable Cutters
- Use Bench Mounted, on Trolley or Overhead Crane
- By inverting, bottom edges can also be worked
- Bevel Mild Steel, Stainless or Aluminum
- Available: Narrow width attachment works strips as narrow as 7/8"



Specifications	Pro-6	Pro-12-C	Pro 12	Pro 12-G	Pro 20	Pro 21-G
Maximum bevel depth	.236"	.625"	.625"	.625"	.785"	.785"
Max material thickness	.625"	1.57"	1.57"	1.25"	1.75"	2.00"
Min material thickness	.125	.250"	.250"	.250"	.312"	.312
Bevel speed	6fpm	10fpm	10fpm	10fpm	5-10fpm	10fpm
Bevel-Angle	22.5-45	22.5-45	22.5-45	20-45	22.5-45	20-45
Motor	3/4hp	3hp	3hp	3hp	4-6hp	4hp
Weight	77 lbs	147 lbs	167hp	249 lbs	620 lbs	840lbs

- Maximum bevel depth at 30° degrees
- Maximum bevel will require 2 passes
- Minimum thickness maybe more for stainless steel
- Available electric 220/440/380/575 volt 3 phase - must specify when ordering
- All Machines include one cutter and pipe beveling attachment

Power Feed Bevelers



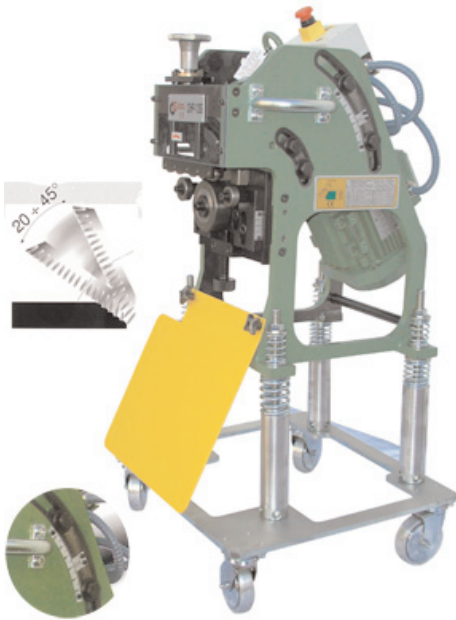
PRO-6 – High Production Beveling

- Bevel at 6' feet per minute
- Direct drive
- Light weight
- Ideal for thin materials



PRO12-C – Power Feed

- Bevel at 10 feet per minute
- Direct Drive motor



PRO-12G – High Production Beveling

- Variable angle 20-45°
- Just turn a hand knob to change the bevel angle
- Includes spring loaded trolley



PRO-12 – High Production Beveling

- Bevel at 10' feet per minute
- Heavy duty Belt drive gear box

Power Feed Bevelers



PRO-12G-REV – High Production Beveling

- Variable angle 20-45°
- Machine can be rotated in it's carriage for Beveling both Top and Bottom edges of a plate
- Includes spring loaded trolley

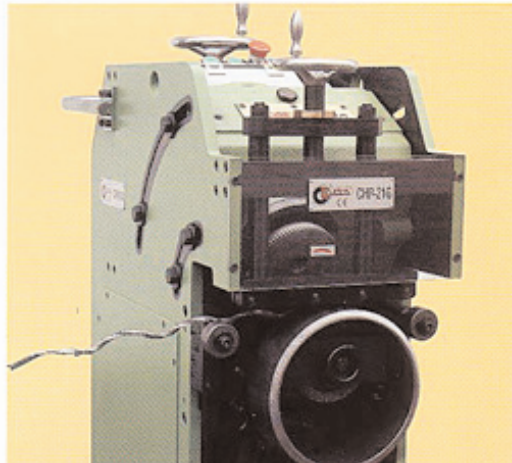
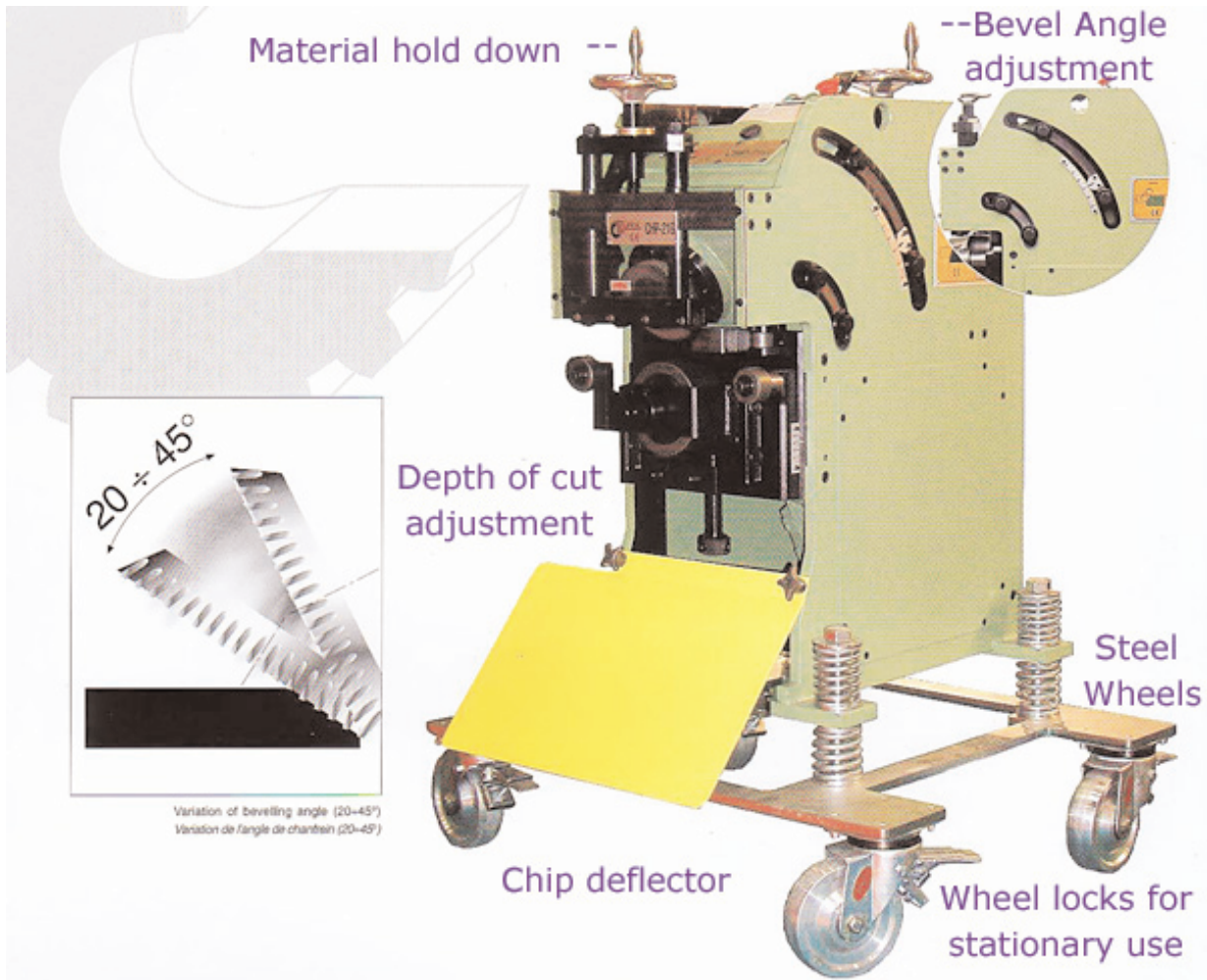


PRO-20 – High Production Beveling

- 2 speed motor
- 5 or 10 feet per minute feed rate
- Interchangeable support rolls for different angles bevels
- Best used as a stationary machine

Power Feed Bevelers

PRO-21-G – Variable Bevel angle 20-45° degrees



Power Feed Bevelers



PRO-21-G-INV – Variable Bevel angle 20-45° degrees

- Inverted for beveling the bottom side of a plate
- No need to Flip a Large Plare

Turbo-Burr®

- Easily brought to the worksite
- For use as both a hand and bench tool
- Puts a safety edge on sheet metal in on pass
- Breaks sharp edges on parts at mill, saw, or shear

Perfect for deburring and edge finishing of:

- Ferrous and non-ferrous metals
- Plastics
- Stainless Steel
- Aluminum
- Laminates
- Printed circuit boards



Rotation Speed	55,000 rpm (no load speed)
Air Consumption	5 to 11 cfm - lubrication not needed
Air Pressure	60 to 120 psi
Air Hose	1/4 inch
Min. Material Thickness	.015 inch
Collet	1/4 inch - compression type
Burr Type	1/4 inch diameter x 2 inch length overall - solid carbide
Depth of Bevel	0 to .075 inches at 45°
Feed Speeds	up to 2 inches per second
Weight	3.5 pounds (1.6kg)



Tube & Pipe Notcher

- Make perfect fit 90° notches
- Easy, one pull on the handle will produce accurate saddle notches for weld fit-up
- Notch up to schedule 40 pipe - FAST
- Portable and easy to mount to any surface or bench vise
- No set-up needed, simply insert pipe into correct die size hole and pull down on the handle



MODEL	CAPACITY
WFN1	Tube and Pipe Notcher 1/4", 3/8", 1/2" Pipe 3/8", 1/2", 3/4" Tube
WFN2	Tube and Pipe Notcher 3/4", 1", 1 1/4" Pipe 1", 1 3/8", 1 5/8" Tube
WFN3	Tube and Pipe Notcher 1 1/2", 2" Pipe 2", 2 3/8" Tube
WFN4	Tube and Pipe Notcher 1/4", 3/8", 1/2", 3/4", 1", 1 1/4", 1 1/2", and 2" Pipe 3/8", 1/2", 3/4", 1", 1 3/8", 1 5/8", 2", 2 3/8" Tube



- Gear Drive
- 38 strokes per minute
- All the sizes in one machine
- Notches 1/4", 3/8", 1/2", 3/4", 1", 1-1/4", 1-1/2" and 2" Schedule 40 pipe
- Ideal for high production 90 degree notching
- Weight 215 lbs
- Photo shows machine with required guard
- 220 volt Single phase

Weld Shaver – WS625

- Machines weld beads flush to the work piece
 - Milling cutter
 - Fast cutting
 - Gear drive
 - Adjustable depth of cut
 - Eliminates grinding & mistakes
 - Removes weld beads from box corners
-
- **Motor:** 2hp, 110 volt
 - **Weight:** 24 pounds
 - **Width of Cut:** 1/2" (single pass)
 - **Maximum weld bead height:** 3/16" (single pass)
 - Uses 8 standard square carbide inserts
- Patent no. 5522684, 5423642 others pending*



Lifting Magnets

- High Capacity
- Low Cost
- Easy To Use
- Zero Maintenance
- No Marring On/off Lever Release
- Handle Safety Lock
- Rare Earth Permanent Magnet



Model	Lift Cap Flat Steel (lbs.)	Lift Cap Round Steel (lbs.)	Weight (lbs.)	Size (in.) L-W-H / W-Guards
M400	.440		39	14.3 X 7.0 X 3.2
M800	880		81	16.0 X 9.2 X 4.4
M1200	1200		105	18.5 X 9.2 X 4.4
M1700	1760		152	23.5 X 9.5 X 5.2
M2600	2640		222	30.0 X 9.5 X 6.0
M3500	3500		297	26.5 X 6.4 X 6
M5200	5290		482	30.0 X 16.4 X 6
MV500	550	395	42	7.5 X 5.1 X 9.2
MV1100	1100	815	88	11.4 X 5.9 X 16.2
MV2200	2200	1650	158	15.0 X 7.1 X 11.8

FOR SAFETY: NEVER stand under a load being lifted. Not recommended for painted or rusty surfaces. Maximum holding force on 2" clean, smooth, flat plate steel.

