



BLUE ELASTIC RUBBER

Series	Caster Type	Page #
TP1-TP3	Pressed Steel - Top Plates	2
03	Pressed Steel - Brakes	3
3B-LPA / 3B-LHA	Pressed Steel - Light Duty	4
3B-LE	Pressed Steel - Medium Duty	5-6
3B-L	Pressed Steel - Medium Heavy Duty	7
3B-LK	Pressed Steel - Medium Heavy Duty	8
3E-55	Total Lock Casters	9
3J-130 / 3J-131	Cold Rolled Steel	10-11
3J-134	Cold Rolled Steel	12-13
3J-136	Cold Rolled Steel	14-15
3J-61 / 3J-62	Bright Zinc Plating	16-17

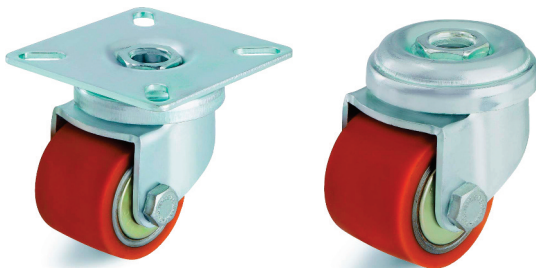
Series	Stainless Steel Caster Type	Page #
3B-SS	Pressed Stainless Steel	18-20



NOISE ABSORBING NYLON



NYLON



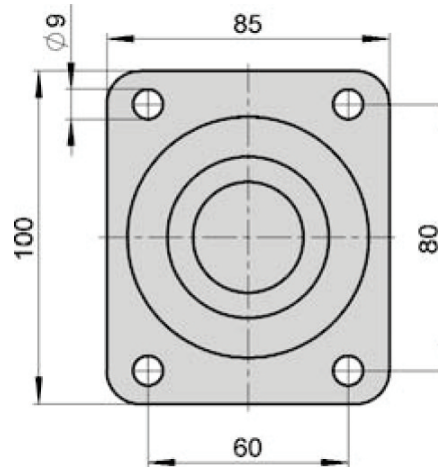
EXTRATHANE®

TOP PLATE #1Dimensions in Millimeters

85 mm x 100 mm

Dimensions in Inches

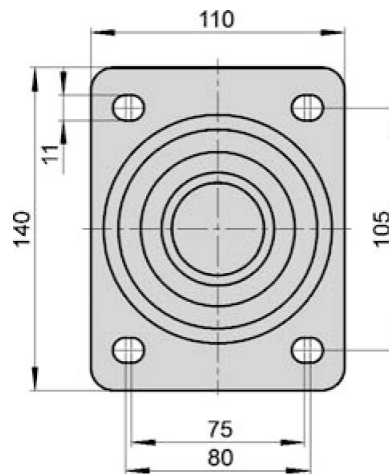
3-1/8 in x 4-1/8 in

**TOP PLATE #3**Dimensions in Millimeters

110 mm x 140 mm

Dimensions in Inches

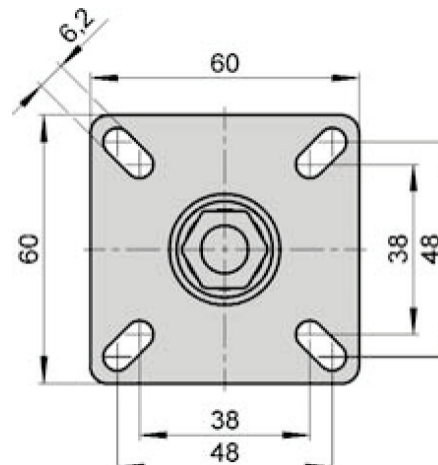
4-1/4 in x 5-1/2 in

**TOP PLATE #22**Dimensions in Millimeters

60 mm x 60 mm

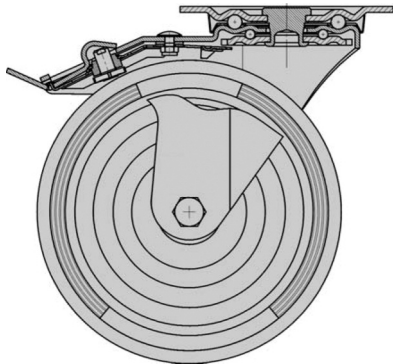
Dimensions in Inches

2-3/8 in x 2-3/8 in



Wheel and Swivel Head Brakes

With the brake systems described in the following sections, the rolling and swivel motions of swivel casters can be locked when the equipment is motionless. (Wheel and swivel head brakes) Depending on the application type, "non-trailing", "trailing" or "stationary" brake systems are used. Related to the rolling direction, the "non-trailing" brake system is fitted to the front of the caster and the "trailing" brake system to the rear. The "stationary" brake system does not rotate with the swivel head. The brake lever remains in the same position at all times. The selection of one of these three brake systems depends on the requirements based upon user-friendliness, fitting conditions, and user-specific accident prevention measures. If these brake systems are combined with wheels with soft tyres/treads, particularly the VW, VWPP and P wheel series, the brake forces are reduced.



Total Lock Trailing Edge Wheel and Swivel (TL/TE)

This brake system is attached to the back of the bracket and provides a positive locking of the swivel head and a nonpositive locking of the wheel by means of a very strong brake mechanism, designed for high security and long life.

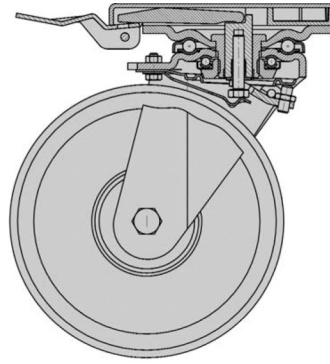
A brake spring engages in a toothed spherical disc and locks both the swivel head and the wheel.

The holding pressure is adjustable for the HD bracket series (all sizes).

The design of this brake system meets the requirement for a minimum swivel radius.



TL/TE



Total Lock Ideal Brake Wheel and Swivel (TL/IB)

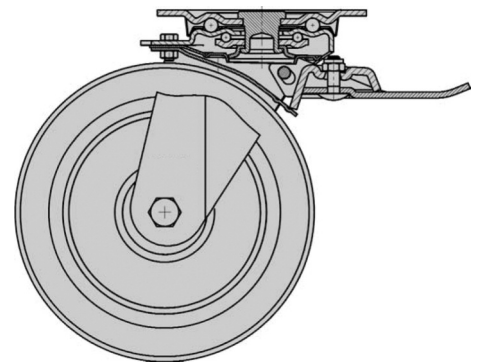
This brake system provides a non-positive swivel head and wheel brake on the basis of a very strong brake mechanism which has been designed in accordance with high security and long service life aspects. Wear is prevented by the conical brake within the swivel head. The holding pressure is adjustable.

The special characteristic of this brake system is its "stationary" brake lever which does not rotate together with the swivel caster and therefore is always operable at the same position.

Increases height by 17 mm. A synthetic adapter plate (Ref. No. AP3) is available for the height adjustment of casters without these brakes.



TL/IB



Total Lock Leading Edge Brake Wheel and Swivel (TL/LE)

This brake system provides a non-positive swivel head and wheel brake on the basis of a very strong brake mechanism which has been designed in accordance with high security and long service life aspects.

The holding pressure is adjustable. The rotation radius of the brake lever is mostly positioned within the wheel's swivel radius.



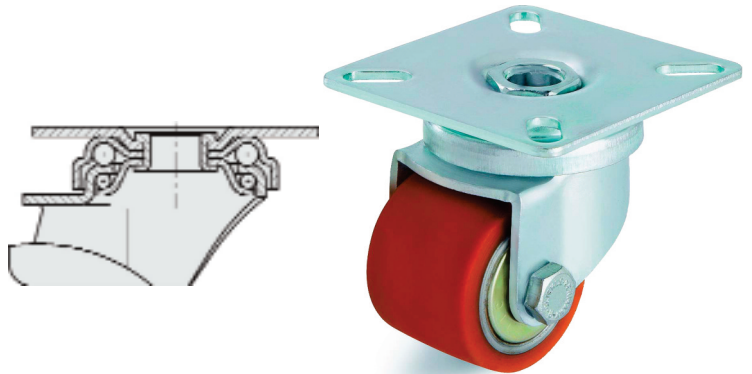
TL/LE

PLATE TYPE FEATURES

Load Capacity Up to 100 kg.

Casters: Pressed steel, swivel bracket with double ball bearing in the swivel head, bolted wheel axle, zinc-plated.

Wheels: Made of Extrathane® polyurethane, firmly bonded, colour light brown, non-marking, 92° shore A, elastic, abrasion-resistant, high cut and tear propagation resistance, non-staining, floor-saving, low-noise operation, low rolling resistance. Very good chemical connection with the wheel centre. Wheel centre: Made of steel **with precision ball bearings.**



**Extrathane®
Wheel**

3B-LPA PLATE CASTER SPECIFICATIONS

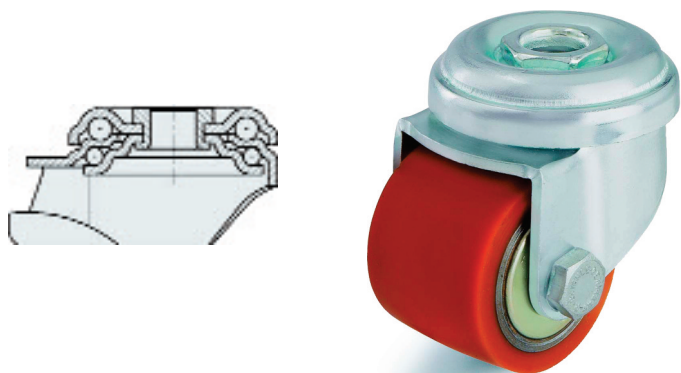
Wheel Dia. (mm)	Wheel Width (mm)	Capacity (lb)	Bearing Type	OAH (mm)	Plate (mm)	Bolt Hole Spacing (mm)	Bolt Hole (mm)	Offset	Swivel Part Number
35	27	220	Precision Ball	52	60 x 60	38 x 38 / 48 x 48	6, 2	15	3B-LPA-ER/STL-P-35-S
35	27	220	Precision Ball	52	60 x 60	38 x 38 / 48 x 48	6, 2	15	3B-LPA-NY/MD-P-35-S

HOLE TYPE FEATURES

Load Capacity Up to 100 kg.

Casters: Pressed steel, swivel bracket with double ball bearing in the swivel head, bolted wheel axle, zinc-plated.

Wheels: Made of Extrathane® polyurethane, firmly bonded, colour light brown, non-marking, 92° shore A, elastic, abrasion-resistant, high cut and tear propagation resistance, non-staining, floor-saving, low-noise operation, low rolling resistance. Very good chemical connection with the wheel centre. Wheel centre: Made of steel, precision ball bearing.



**Extrathane®
Wheel**

3B-LHA HOLE CASTER SPECIFICATIONS

Wheel Dia. (mm)	Wheel Width (mm)	Capacity (lb)	Bearing Type	OAH (mm)	Plate (mm)	Bolt Hole (mm)	Offset (mm)	Swivel Part Number
35	27	220	Precision Ball	50	43	11	15	3B-LHA-ER/STL-P-35-S
35	27	220	Precision Ball	50	43	11	15	3B-LHA-NY/MD-P-35-S

3B-LE / 3B-LEH SERIES — NOISE ABSORBING NYLON

Casters: Pressed steel, swivel bracket with double ball bearing in the swivel head, dynamically pressed resulting in an extremely low swivel head play and a long service life, with swivel head sealing, bolted wheel axle, zinc-plated.

Hole Casters: Pressed steel, with bolt hole, double ball bearing in the swivel head and strong central kingpin, dynamically pressed resulting in an extremely low swivel head play and a long service life, bolted wheel axle, zinc-plated.

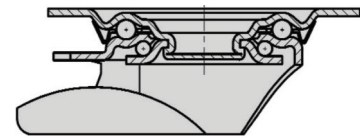
Wheels: Made of high-quality nylon, color natural white, noise-absorbing (-10 decibel) achieved with elastic solid rubber inner cushion ring layer, color grey, vibration-cushioned operational comfort, high abrasion resistance, low rolling resistance, smooth running performance on even floors, shock and impact-resistant, corrosion-resistant. Wheel centres: Made of high-quality nylon, color black, shock and impact-proof, corrosion-resistant, ball bearing.

Brake Options:

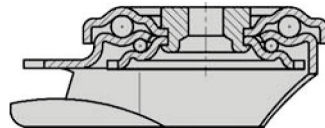
- TL/TE** Total lock / **T**ailing edge brake
- TL/LE** Total lock / **L**eading edge brake
- TL/IB** Total lock / **I**deal locking brake



LE SWIVEL CROSS SECTION



LEH SWIVEL CROSS SECTION



3B-LE / 3B-LEH SERIES CASTER SPECIFICATIONS

Wheel Type (Wheel Code)	Diameter (mm)	Width (mm)	Capacity (lbs)	OAH (mm)	Bolt Hole (mm)	Offset Swivel (mm)	Swivel Part Number Bearing Type***
NOISE ABSORBING NYLON (NA/NN) WHEELS W/ PRECISION BALL BEARINGS – SWIVEL RIG W/ TP1 TOP PLATE 100 X 85; BOLT HOLE 80 X 60							
	100	35	330	125	9	36	3B/LE-ST1-NA/NN*-P-100-S**
	125	35	330	150	9	40	3B/LE-ST1-NA/NN*-P-125-S**
Wheel Type (Wheel Code)	Diameter (mm)	Width (mm)	Capacity (lbs)	OAH (mm)	Plate / Bolt (mm)	Offset (mm)	Swivel Part Number
NOISE ABSORBING NYLON (NA/NN) WHEELS W/ PRECISION BALL BEARINGS – SWIVEL RIG W/ BOLT HOLE FITTING							
	100	35	330	125	70 / 13	36	3B/LEH-NA/NN*-P-100-S**
	125	35	330	150	70 / 13	40	3B/LEH-NA/NN*-P-125-S**

* Add wheel options after wheel designation in part number

** Add caster options after swivel designation in part number , i.e. Add "R" for rigid, TL/LE for Total Lock/ Leading Edge Brake

*** P=Precision Bearing, R=Roller Bearing, PL=Plain Bearing

VARIANTS / ACCESSORIES

Code	-XR
Description	Stainless steel roller bearing in wheel hub
Available for Wheel (mm)	-Upon Request

3B-LE SERIES — BLUE ELASTIC RUBBER WHEELS

LE Casters: Pressed steel, swivel bracket with double ball bearing in the reinforced swivel head, dynamically pressed resulting in an extremely low swivel head play and a long service life, strong central kingpin (wheel Ø 160-250 mm) and swivel head sealing, bolted wheel axle, zinc-plated.

Wheels: Elastic solid rubber, smooth rolling quality, color blue, 65° shore A, vulcanised, non-detachable connection, low rolling resistance.

Wheel centres: Made of high-quality nylon, color black, shock and impact-resistant, corrosion-resistant, plain, roller or ball bearing.



Brake Options:

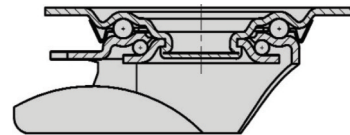
TL/TE Total lock / **Trailing** edge brake

TL/LE Total lock / **Leading** edge brake

TL/IB Total lock / **Ideal** locking brake

LE Casters are Available in Stainless Steel and Hole Casters.

LE SWIVEL CROSS SECTION



3B-LE SERIES CASTER SPECIFICATIONS

Wheel Type (Wheel Code)	Diameter (mm)	Width (mm)	Capacity (lbs)	OAH (mm)	Bolt Hole (mm)	Offset (mm)	Swivel Part Number Bearing Type***
ELASTIC RUBBER / BLUE / NYLON CORE (ER/BL/NN) WHEEL W/ PRECISION BALL BRG – SWIVEL RIG W/ TP1 TOP PLATE 100 X 85, BHC 80 X 60							
	100	38	375	125	9	36	3BLE-TP1-ER/BL/NN*-P-100-S**
	125	40	440	150	9	40	3BLE-TP1-ER/BL/NN*-P-125-S**

* Add wheel options after wheel designation in part number

** Add caster options after swivel designation in part number , i.e. Add "R" for rigid, TL/LE for Total Lock/ Leading Edge Brake

*** P=Precision Bearing, R=Roller Bearing, PL=Plain Bearing

VARIANTS / ACCESSORIES

Code	-XR
Description	Stainless steel roller bearing in wheel hub
Available for Wheel (mm)	-Upon Request

3B-L SERIES — NOISE ABSORBING NYLON WHEELS

Casters: Pressed steel, swivel bracket with double ball bearing in the reinforced swivel head, dynamically pressed resulting in an extremely low swivel head play and a long service life, swivel head sealing, bolted wheel axle, zinc-plated.

Wheels: Made of high-quality nylon, color natural white, noise-absorbing (-10 decibel) achieved with elastic solid rubber inner cushion ring layer, color grey, vibration-cushioned operational comfort, high abrasion resistance, low rolling resistance, smooth running performance on even floors, shock and impact-resistant, corrosion-resistant. Wheel centres: Made of high-quality nylon, color black, shock and impact-proof, corrosion-resistant, ball bearing.

Brake Options:

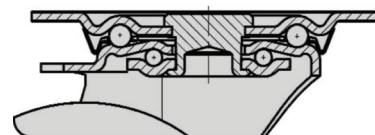
TL/TE Total lock / **T**ailing edge brake

TL/LE Total lock / **L**eading edge brake

TL/IB Total lock / **I**deal locking brake



**L SWIVEL
CROSS SECTION**



3B-L SERIES CASTER SPECIFICATIONS

Wheel Type (Wheel Code)	Diameter (mm)	Width (mm)	Capacity (lbs)	OAH (mm)	Bolt Hole (mm)	Offset Swivel	Swivel Part Number Bearing Type***
NOISE ABSORBING NYLON (NA/NN) WHEELS W/ PRECISION BALL BEARINGS – SWIVEL RIG W/ TP1 TOP PLATE 100 X 85; BOLT HOLE 80 X 60							
	100	35	440	125	9	36	3BLE-TP1-NA/NN*-P-100-S**
	125	35	440	150	9	40	3BLE-TP1-NA/NN*-P-125-S**

* Add wheel options after wheel designation in part number

** Add caster options after swivel designation in part number , i.e. Add "R" for rigid, TL/LE for Total Lock/ Leading Edge Brake

*** P=Precision Bearing, R=Roller Bearing, PL=Plain Bearing

VARIANTS / ACCESSORIES

Code	-XR
Description	Stainless steel roller bearing in wheel hub
Available for Wheel (mm)	-Upon Request

3B-LK SERIES — NOISE ABSORBING NYLON

Casters: Pressed from heavy sheet-steel, swivel bracket with double ball bearing in the swivel head, dynamically pressed resulting in an extremely low swivel head play and a long service life, swivel head sealing, bolted wheel axle, zinc-plated.

Wheels: Made of high-quality nylon, color natural white, noise-absorbing (-10 decibel) achieved with elastic solid rubber inner cushion ring layer, color grey, vibration-cushioned operational comfort, high abrasion resistance, low rolling resistance, smooth running performance on even floors, shock and impact-resistant, corrosion-resistant. Wheel centres: Made of high-quality nylon, color black, shock and impact-proof, corrosion-resistant, ball bearing.

Brake Options:

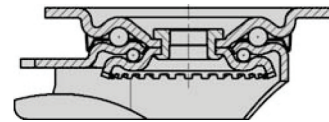
TL/TE Total lock / **Trailing** edge brake

TL/LE Total lock / **Leading** edge brake

TL/IB Total lock / **Ideal** locking brake



**LK SWIVEL
CROSS SECTION**



3B-LK SERIES CASTER SPECIFICATIONS

Wheel Type (Wheel Code)	Diameter (mm)	Width (mm)	Capacity (lbs)	OAH (mm)	Bolt Hole (mm)	Offset Swivel	Swivel Part Number Bearing Type***
NOISE ABSORBING NYLON (NA/NN) WHEELS W/ PRECISION BALL BRG – SWIVEL RIG W/ TP1 TOP PLATE 100 X 85; BOLT HOLE 80 X 60							
	100	35	440	130	9	45	3BLK-TP1-NA/NN*-P-100-S**
	125	35	485	155	9	48	3BLK-TP1-NA/NN*-P-125-S**
NOISE ABSORBING NYLON (NA/NN) WHEELS W/ PRECISION BALL BRG – SWIVEL RIG W/ TP2 TOP PLATE 140 X 110; BOLT HOLE 105 X 75-80**							
	100	35	440	130	9	45	3BLK-TP2-NA/NN*-P-100-S**
	125	35	485	155	9	48	3BLK-TP2-NA/NN*-P-125-S**

* Add wheel options after wheel designation in part number

** Add caster options after swivel designation in part number , i.e. Add "R" for rigid, TL/LE for Total Lock/ Leading Edge Brake

*** P=Precision Bearing, R=Roller Bearing, PL=Plain Bearing

3E-55 SERIES — TOTAL LOCK CASTERS

- Double ball bearing raceway
- Heavy gauge cold rolled steel
- Plastic grease seal on swivel raceway
- Brake has steel footpad
- Finish Options: Chrome Plated



Stems

Stem	Size	Stem Type
43	1/2-13x1-1/2	Threaded Stem

Plates

Plate	Size	Bolt Pattern	Bolt Dia.
03	4x4-1/2	2-5/8x3-5/8 to 3x3	3/8

3E-55 SERIES CASTER SPECIFICATIONS

Wheel Dia.	Tread Width	Wheel Type	Load Capacity	OAH	Bearing	Total Lock Part #	Swivel Lock Part #
4	1-1/2	No Wheel	500			3E-55TL415	3E-55CS415
4	1-1/2	Rubber on Poly	400	5-1/2	Roller	3E-55TL415TPR2	3E-55CS415TPR2
4	1-1/2	PU Polyolefin	500	5-1/2	Roller	3E-55TL415PPU2	3E-55CS415PPU2
4	1-1/2	Polyolefin	450	5-1/2	Roller	3E-55TL415PO2	3E-55CS415PO2
5	1-1/2	No Wheel	600			3E-55TL515	3E-55CS515
5	1-1/2	Rubber on Poly	450	6-1/2	Roller	3E-55TL515TPR2	3E-55CS515TPR2
5	1-1/2	Rubber on Poly	450	6-1/2	Precision Ball	3E-55TL515TPR3	3E-55CS515TPR3
5	1-1/2	PU Polyolefin	600	6-1/2	Roller	3E-55TL515PPU2	3E-55CS515PPU2
5	1-1/2	PU Polyolefin	600	6-1/2	Precision Ball	3E-55TL515PPU3	3E-55CS515PPU3
5	1-1/2	Polyolefin	550	6-1/2	Roller	3E-55TL515PO2	3E-55CS515PO2
6	1-1/2	No Wheel	700			3E-55TL615	3E-55CS615
6	1-1/2	Rubber on Poly	500	7-1/2	Roller	3E-55TL615TPR2	3E-55CS615TPR2
6	1-1/2	PU Polyolefin	700	7-1/2	Roller	3E-55TL615PPU2	3E-55CS615PPU2
6	1-1/2	Polyolefin	650	7-1/2	Roller	3E-55TL615POR2	3E-55CS615POR2
8	1-1/2	No Wheel	750			3E-55TL815	3E-55CS815
8	1-1/2	Rubber on Poly	500	9-3/4	Roller	3E-55TL815TPR2	3E-55CS815TPR2
8	1-1/2	Rubber on Poly	500	9-3/4	Precision Ball	3E-55TL815TPR3	3E-55CS815TPR3
8	1-1/2	PU Polyolefin	750	9-3/4	Roller	3E-55TL815PPU2	3E-55CS815PPU2
8	1-1/2	PU Polyolefin	750	9-3/4	Precision Ball	3E-55TL815TPR3	3E-55CS815TPR3

3J-130 SERIES

Load Capacity Up to 400 lbs

- Design: heavy gauge cold rolled steel, formed for strength and heat treated.
- Dust Cap: protects swivel raceway bearings and improves performance.
- Finish: bright zinc plating to resist rust and corrosion.
- Swivel Construction: double ball bearing with hardened raceways.
- Axle: Wheel sizes 3", 4" and 5" use 3/8" dia axle.
- Wheel sizes 6" and 8" use 1/2" diameter axle.
- King Pin: 1/2" steel rivet
- Fork Leg Spacing: 2"



CASTER OPTIONS:

- **VertiLoc® Brake:** to order, add "VL" to end of model number.
- **Swivel Grease Seal:** Includes zerk grease fitting in dust cap. To order, add "GS" to end of model number.
- **Optional Plate Sizes:** variety of plate sizes available – consult Acorn™.

MOUNTING OPTIONS

Mounting Code	Top Plate Size	Bolt Hole Spacing	Mounting Bolt Size
PLT 1	2-3/8" x 3-5/8"	1-3/4" x 3"	1/4"
PLT 2	2-3/8" x 3-5/8"	1-3/4" x 3"	5/16"
PLT 3	3-1/8" x 4-1/8"	2-3/8" x 3-7/16"	5/16"
PLT 4	4" x 4"	3" x 3"	3/8"
PLT 5	3-3/4" x 4-1/2"	2-5/8" x 3-5/8" to 3" x 3"	3/8"
PLT 7	3-1/2" x 3-1/2"	2-5/8" x 2-5/8"	9/32"

3J-130 SERIES SPECIFICATIONS

Wheel Diameter	Tread Width	Wheel Type	Bearing	Capacity	Swivel Caster Model Number	Rigid Caster Model Number	Approx. Weight	Load Weight	Swivel Radius
3	1-13/16	Polyolefin	Roller	400	3J-3-130-532	3J-3-131-532	1-3/4	4	2-3/8
4	1-5/8	Cushion / Solid Rubber	Plain	225	3J-4-130-109	3J-4-131-109	2-1/8	5-3/8	3-1/2
4	1-5/8	Cushion / Solid Rubber	Roller	225	3J-4-130-209	3J-4-131-209	2-1/8	5-3/8	3-1/2
4	1-5/8	Hard / Solid Rubber	Plain	400	3J-4-130-110	3J-4-131-110	2-1/8	5-3/8	3-1/2
4	1-5/8	Hard / Solid Rubber	Roller	400	3J-4-130-210	3J-4-131-210	2-1/8	5-3/8	3-1/2
4	1-1/2	Phenolic	Plain	400	3J-4-130-121	3J-4-131-121	2-1/8	5-3/8	3-1/2
4	1-1/2	Phenolic	Roller	400	3J-4-130-221	3J-4-131-221	2-1/8	5-3/8	3-1/2
4	1-1/2	Polyolefin	Plain	400	3J-4-130-521	3J-4-131-521	2-1/8	5-3/8	3-1/2
4	1-1/2	Polyolefin	Roller	400	3J-4-130-522	3J-4-131-522	2-1/8	5-3/8	3-1/2
5	1-5/8	Cushion / Solid Rubber	Plain	260	3J-5-130-109	3J-5-131-109	2-3/4	6-1/4	4
5	1-5/8	Cushion / Solid Rubber	Roller	260	3J-5-130-209	3J-5-131-209	2-3/4	6-1/4	4
5	1-5/8	Hard / Solid Rubber	Plain	400	3J-5-130-110	3J-5-131-110	2-1/2	6-1/4	4
5	1-5/8	Hard / Solid Rubber	Roller	400	3J-5-130-210	3J-5-131-210	2-1/2	6-1/4	4
5	1-1/2	Phenolic	Plain	400	3J-5-130-121	3J-5-131-121	2-1/2	6-1/4	4
5	1-1/2	Phenolic	Roller	400	3J-5-130-221	3J-5-131-221	2-1/2	6-1/4	4
5	1-1/2	Polyolefin	Plain	400	3J-5-130-521	3J-5-131-521	2-3/4	6-1/4	4
5	1-1/2	Polyolefin	Roller	400	3J-5-130-522	3J-5-131-522	2-3/4	6-1/4	4
5	1-1/2	Advantage TPR / Flat	Roller	400	3J-5-130-215GF	3J-5-131-215GF	2-1/8	6-1/4	4
5	1-1/2	PolyLoc / Grey	Roller	400	3J-5-130-215G	3J-5-131-215G	2-1/8	6-1/4	4
5	1-1/2	PolyLoc / Blue	Roller	400	3J-5-130-215P	3J-5-131-215P	2-1/8	6-1/4	4

Continued on next page...

3J-130 SERIES SPECIFICATIONS CONTINUED...

Wheel Diameter	Tread Width	Wheel Type	Bearing	Capacity	Swivel Caster Model Number	Rigid Caster Model Number	Approx. Weight	Load Weight	Swivel Radius
6	1-1/2	Phenolic	Plain	400	3J-6-130-121	3J-6-131-121	2-3/4	7-1/2	4-3/4
6	1-1/2	Phenolic	Roller	400	3J-6-130-221	3J-6-131-221	2-3/4	7-1/2	4-3/4
6	1-1/2	Polyolefin	Delrin	400	3J-6-130-523	3J-6-131-523	2-3/4	7-1/2	4-3/4
6	1-1/2	Polyolefin	Roller	400	3J-6-130-522	3J-6-131-522	2-3/4	7-1/2	4-3/4
6	1-1/2	Advantage TPR / Flat	Roller	400	3J-6-130-215GF	3J-6-131-215GF	2-3/4	7-1/2	4-3/4
6	1-1/2	PolyLoc / Grey	Roller	400	3J-6-130-215G	3J-6-131-215G	2-3/4	7-1/2	4-3/4
6	1-1/2	PolyLoc / Blue	Roller	400	3J-6-130-215P	3J-6-131-215P	2-3/4	7-1/2	4-3/4
8	1-1/2	Advantage TPR / Flat	Roller	250	3J-8-130-215GF	3J-8-131-215GF	3	9-1/2	6-1/2
8	1-1/2	PolyLoc / Grey	Roller	250	3J-8-130-215G	3J-8-131-215G	3	9-1/2	6-1/2
8	1-1/2	PolyLoc / Blue	Roller	250	3J-8-130-215P	3J-8-131-215P	3	9-1/2	6-1/2
8	1-1/2	Polyolefin	Delrin	250	3J-8-130-523	3J-8-131-523	3	9-1/2	6-1/2

3J-134 SERIES

Load Capacity Up to 400 lbs

- Design: heavy gauge cold rolled steel, formed for strength and heat treated.
- Dust Cap: protects swivel raceway bearings and improves performance.
- Finish: bright zinc plating to resist rust and corrosion.
- Swivel Construction: double ball bearing with hardened raceways.
- Axle: Wheel sizes 3", 4" and 5" use 3/8" dia axle.
- Wheel sizes 6" and 8" use 1/2" diameter axle.
- King Pin: 1/2" steel rivet
- Fork Leg Spacing: 2"



CASTER OPTIONS:

- **VertiLoc® Brake:** to order, add "VL" to end of model number.
- **Swivel Grease Seal:** Includes zerk grease fitting in dust cap. To order, add "GS" to end of model number.
- **Optional Plate Sizes:** variety of plate sizes available – consult Acorn™.

MOUNTING OPTIONS

Standard Stem Sizes: to order, specify stem code number and add to end of caster model number.

Stem Code	Stem Sizes
STEM 1	3/4" diameter x 2-3/16" long
STEM 2	13/16" diameter x 2-3/16" long
STEM 3	.845" diameter x 2-3/16" long
STEM 4	.865" diameter x 2-3/16" long
STEM 5	1" diameter x 2-3/16" long
STEM 6	.860" SQUARE x 2-3/16" long

3J-134 SERIES SPECIFICATIONS

Wheel Diameter	Tread Width	Wheel Type	Bearing	Capacity	Model Number	Approx. Weight	Load Weight	Swivel Radius
3	1-13/16	Polyolefin	Roller	400	3J-3-134-532	1-3/4	3-13/16	2-3/8
4	1-5/8	Cushion / Solid Rubber	Plain	225	3J-4-134-109	2-1/8	5-3/16	3-1/2
4	1-5/8	Cushion / Solid Rubber	Roller	225	3J-4-134-209	2-1/8	5-3/16	3-1/2
4	1-5/8	Hard / Solid Rubber	Plain	400	3J-4-134-110	2-1/8	5-3/16	3-1/2
4	1-5/8	Hard / Solid Rubber	Roller	400	3J-4-134-210	2-1/8	5-3/16	3-1/2
4	1-1/2	Phenolic	Plain	400	3J-4-134-121	2-1/8	5-3/16	3-1/2
4	1-1/2	Phenolic	Roller	400	3J-4-134-221	2-1/8	5-3/16	3-1/2
4	1-1/2	Polyolefin	Plain	400	3J-4-134-521	2-1/8	5-3/16	3-1/2
4	1-1/2	Polyolefin	Roller	400	3J-4-134-522	2-1/8	5-3/16	3-1/2
5	1-5/8	Cushion / Solid Rubber	Plain	260	3J-5-134-109	2-3/4	6-1/16	4
5	1-5/8	Cushion / Solid Rubber	Roller	260	3J-5-134-209	2-3/4	6-1/16	4
5	1-5/8	Hard / Solid Rubber	Plain	400	3J-5-134-110	2-1/2	6-1/16	4
5	1-5/8	Hard / Solid Rubber	Roller	400	3J-5-134-210	2-1/2	6-1/16	4
5	1-1/2	Phenolic	Plain	400	3J-5-134-121	2-1/2	6-1/16	4
5	1-1/2	Phenolic	Roller	400	3J-5-134-221	2-1/2	6-1/16	4
5	1-1/2	Polyolefin	Plain	400	3J-5-134-521	2-3/4	6-1/16	4
5	1-1/2	Polyolefin	Roller	400	3J-5-134-522	2-3/4	6-1/16	4
5	1-1/2	Advantage TPR / Flat	Roller	400	3J-5-134-215GF	2-1/8	6-1/16	4
5	1-1/2	PolyLoc / Grey	Roller	400	3J-5-134-215G	2-1/8	6-1/16	4
5	1-1/2	PolyLoc / Blue	Roller	400	3J-5-134-215P	2-1/8	6-1/16	4

Continued on next page...

3J-134 SERIES SPECIFICATIONS CONTINUED...

Wheel Diameter	Tread Width	Wheel Type	Bearing	Capacity	Model Number	Approx. Weight	Load Weight	Swivel Radius
6	1-1/2	Phenolic	Plain	400	3J-6-134-121	2-3/4	7-5/16	4-3/4
6	1-1/2	Phenolic	Roller	400	3J-6-134-221	2-3/4	7-5/16	4-3/4
6	1-1/2	Polyolefin	Delrin	400	3J-6-134-523	2-3/4	7-5/16	4-3/4
6	1-1/2	Polyolefin	Roller	400	3J-6-134-522	2-3/4	7-5/16	4-3/4
6	1-1/2	Advantage TPR / Flat	Roller	400	3J-6-134-215GF	2-3/4	7-5/16	4-3/4
6	1-1/2	PolyLoc / Grey	Roller	400	3J-6-134-215G	2-3/4	7-5/16	4-3/4
6	1-1/2	PolyLoc / Blue	Roller	400	3J-6-134-215P	2-3/4	7-5/16	4-3/4
8	1-1/2	Advantage TPR / Flat	Roller	250	3J-8-134-215GF	3	9-5/16	6-1/2
8	1-1/2	PolyLoc / Grey	Roller	250	3J-8-134-215G	3	9-5/16	6-1/2
8	1-1/2	PolyLoc / Blue	Roller	250	3J-8-134-215P	3	9-5/16	6-1/2
8	1-1/2	Polyolefin	Delrin	250	3J-8-134-523	3	9-5/16	6-1/2
8	1-1/2	Polyolefin	Roller	250	3J-8-134-522	3	9-5/16	6-1/2

3J-136 SERIES

Load Capacity Up to 400 lbs

- Design: heavy gauge cold rolled steel, formed for strength and heat treated.
- Dust Cap: protects swivel raceway bearings and improves performance.
- Finish: bright zinc plating to resist rust and corrosion.
- Swivel Construction: double ball bearing with hardened raceways.
- Axle: Wheel sizes 3", 4" and 5" use 3/8" dia axle.
- Wheel sizes 6" and 8" use 1/2" diameter axle.
- King Pin: 1/2" steel rivet
- Fork Leg Spacing: 2"



CASTER OPTIONS:

- **VertiLoc® Brake:** to order, add "VL" to end of model number.
- **Swivel Grease Seal:** Includes zerk grease fitting in dust cap. To order, add "GS" to end of model number.
- **Optional Stem Sizes:** variety of sizes available – consult Acorn™.

MOUNTING OPTIONS

Standard Stem Sizes: to order, specify stem code number and add to end of caster model number

Stem Code	Stem Sizes
STEM 1	1/2" diameter –13 x 3/4" long
STEM 2	1/2" diameter –13 x 1" long
STEM 3	1/2" diameter –13 x 1-1/2" long
STEM 4	1/2" diameter –20 x 3/4" long
STEM 5	1/2" diameter –20 x 2-1/4" long
STEM 6	5/8" diameter –11 x 1-1/4" long
STEM 7	5/8" diameter – 18 x 1-3/4" long
STEM 8	3/4" diameter – 10 x 1" long

3J-136 SERIES SPECIFICATIONS

Wheel Diameter	Tread Width	Wheel Type	Bearing	Capacity	Model Number	Approx. Weight	Load Weight	Swivel Radius
3	1-13/16	Polyolefin	Roller	400	3J-3-136-532	1-3/4	3-13/16	2-3/8
4	1-5/8	Cushion / Solid Rubber	Plain	225	3J-4-136-109	2-1/8	5-3/16	3-1/2
4	1-5/8	Cushion / Solid Rubber	Roller	225	3J-4-136-209	2-1/8	5-3/16	3-1/2
4	1-5/8	Hard / Solid Rubber	Plain	400	3J-4-136-110	2-1/8	5-3/16	3-1/2
4	1-5/8	Hard / Solid Rubber	Roller	400	3J-4-136-210	2-1/8	5-3/16	3-1/2
4	1-1/2	Phenolic	Plain	400	3J-4-136-121	2-1/8	5-3/16	3-1/2
4	1-1/2	Phenolic	Roller	400	3J-4-136-221	2-1/8	5-3/16	3-1/2
4	1-1/2	Polyolefin	Plain	400	3J-4-136-521	2-1/8	5-3/16	3-1/2
4	1-1/2	Polyolefin	Roller	400	3J-4-136-522	2-1/8	5-3/16	3-1/2
5	1-5/8	Cushion / Solid Rubber	Plain	260	3J-5-136-109	2-3/4	6-1/16	4
5	1-5/8	Cushion / Solid Rubber	Roller	260	3J-5-136-209	2-3/4	6-1/16	4
5	1-5/8	Hard / Solid Rubber	Plain	400	3J-5-136-110	2-1/2	6-1/16	4
5	1-5/8	Hard / Solid Rubber	Roller	400	3J-5-136-210	2-1/2	6-1/16	4
5	1-1/2	Phenolic	Plain	400	3J-5-136-121	2-1/2	6-1/16	4
5	1-1/2	Phenolic	Roller	400	3J-5-136-221	2-1/2	6-1/16	4
5	1-1/2	Polyolefin	Plain	400	3J-5-136-521	2-3/4	6-1/16	4
5	1-1/2	Polyolefin	Roller	400	3J-5-136-522	2-3/4	6-1/16	4
5	1-1/2	Advantage TPR / Flat	Roller	400	3J-5-136-215GF	2-1/8	6-1/16	4
5	1-1/2	PolyLoc / Grey	Roller	400	3J-5-136-215G	2-1/8	6-1/16	4
5	1-1/2	PolyLoc / Blue	Roller	400	3J-5-136-215P	2-1/8	6-1/16	4

Continued on next page...

3J-136 SERIES SPECIFICATIONS CONTINUED...

Wheel Diameter	Tread Width	Wheel Type	Bearing	Capacity	Model Number	Approx. Weight	Load Weight	Swivel Radius
6	1-1/2	Phenolic	Plain	400	3J-6-136-121	2-3/4	7-5/16	4-3/4
6	1-1/2	Phenolic	Roller	400	3J-6-136-221	2-3/4	7-5/16	4-3/4
6	1-1/2	Polyolefin	Delrin	400	3J-6-136-523	2-3/4	7-5/16	4-3/4
6	1-1/2	Polyolefin	Roller	400	3J-6-136-522	2-3/4	7-5/16	4-3/4
6	1-1/2	Advantage TPR / Flat	Roller	400	3J-6-136-215GF	2-3/4	7-5/16	4-3/4
6	1-1/2	PolyLoc / Grey	Roller	400	3J-6-136-215G	2-3/4	7-5/16	4-3/4
6	1-1/2	PolyLoc / Blue	Roller	400	3J-6-136-215P	2-3/4	7-5/16	4-3/4
8	1-1/2	Advantage TPR / Flat	Roller	250	3J-8-136-215GF	3	9-5/16	6-1/2
8	1-1/2	PolyLoc / Grey	Roller	250	3J-8-136-215G	3	9-5/16	6-1/2
8	1-1/2	PolyLoc / Blue	Roller	250	3J-8-136-215P	3	9-5/16	6-1/2
8	1-1/2	Polyolefin	Delrin	250	3J-8-136-523	3	9-5/16	6-1/2
8	1-1/2	Polyolefin	Roller	250	3J-8-136-522	3	9-5/16	6-1/2

3J-61 SERIES

Load Capacity Up to 500 lbs

- Finish: bright zinc plating to resist rust and corrosion.
- Design: fork legs formed from 3/16" thick steel.
- Swivel Construction: double ball bearing with hardened raceways.
- Axle: 1/2" diameter with zerk grease fitting.
- King Pin: 5/8" steel rivet, hydraulically upset.
- Zerk Grease Fitting: swivel raceway
- Fork Leg Spacing: 2".



CASTER OPTIONS:

- **VertiLoc® Brake:** to order, add "VL" to end of model number.
- **Swivel Lock / Bolt-On:** Field installable 4-position swivel lock. To order specify swivel lock number 3091-22.
- **Swivel Grease Seal:** To order, add "GS" to end of model number.

MOUNTING OPTIONS

Standard Stem Sizes: to order, specify stem code number and add to end of caster model number

Top Plate Size	Bolt Hole Spacing	Mounting Bolt Size
4" x 4 -1/2"	2-5/8" x 3-5/8" to 3" x 3"	3/8"

3J-61 SERIES SPECIFICATIONS

Wheel Diameter	Tread Width	Wheel Type	Bearing	Capacity	Swivel Caster Model Number	Rigid Caster Model Number	Approx. Weight	Load Height	Swivel Radius
4	1-5/8	Cushion / Solid Rubber	Sintered	225	3J-4-61-109	3J-4-62-109	4	5-5/8	3-9/16
		Cushion / Solid Rubber	Roller	225	3J-4-61-209	3J-4-62-209	4	5-5/8	3-9/16
		Hard / Solid Rubber	Sintered	350	3J-4-61-110	3J-4-62-110	4	5-5/8	3-9/16
		Hard / Solid Rubber	Roller	350	3J-4-61-210	3J-4-62-210	4	5-5/8	3-9/16
4	1-1/2	Moldon Rubber / Aluminum Core	Ball	225	3J-4-61-615	3J-4-62-615	5	5-5/8	3-9/16
		Moldon Polyurethane / Aluminum Core	Ball	425	3J-4-61-715	3J-4-62-715	5	5-5/8	3-9/16
		Polyolefin	Plain	450	3J-4-61-521	3J-4-62-521	5	5-5/8	3-9/16
		Polyolefin	Roller	450	3J-4-61-522	3J-4-62-522	5	5-5/8	3-9/16
		Phenolic	Plain	500	3J-4-61-121	3J-4-62-121	4	5-5/8	3-9/16
		Phenolic	Roller	500	3J-4-61-221	3J-4-62-221	4	5-5/8	3-9/16
		5	1-5/8	Cushion / Solid Rubber	Sintered	260	3J-5-61-109	3J-5-62-109	5
Cushion / Solid Rubber	Roller			260	3J-5-61-209	3J-5-62-209	5	6-1/2	4-5/16
Hard / Solid Rubber	Sintered			400	3J-5-61-110	3J-5-62-110	5	6-1/2	4-5/16
Hard / Solid Rubber	Roller			400	3J-5-61-210	3J-5-62-210	5	6-1/2	4-5/16
5	1-1/2	Moldon Rubber / Aluminum Core	Ball	250	3J-5-61-615	3J-5-62-615	6	6-1/2	4-5/16
		Advantage TPR / Flat	Roller	350	3J-5-61-215GF	3J-5-62-215GF	6	6-1/2	4-5/16
		Polyolefin	Plain	450	3J-5-61-521	3J-5-62-521	5	6-1/2	4-5/16
		Polyolefin	Roller	450	3J-5-61-522	3J-5-62-522	5	6-1/2	4-5/16
		Moldon Polyurethane / Aluminum Core	Ball	450	3J-5-61-715	3J-5-62-715	6	6-1/2	4-5/16
		PolyLoc / Grey	Roller	500	3J-5-61-215G	3J-5-62-215G	5	6-1/2	4-5/16
		PolyLoc / Blue	Roller	500	3J-5-61-215P	3J-5-62-215P	5	6-1/2	4-5/16
		Phenolic	Plain	500	3J-5-61-121	3J-5-62-121	5	6-1/2	4-5/16
		Phenolic	Roller	500	3J-5-61-221	3J-5-62-221	5	6-1/2	4-5/16

Continued on next page...

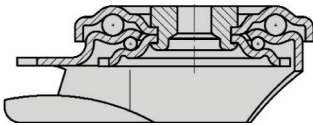
3J-61 SERIES SPECIFICATIONS CONTINUED...

Wheel Diameter	Tread Width	Wheel Type	Bearing	Capacity	Swivel Caster Model Number	Rigid Caster Model Number	Approx. Weight	Load Height	Swivel Radius
6	1-1/2	PolyLoc / Grey	Roller	300	3J-6-61-215G	3J-6-62-215G	6	7-1/2	5-1/16
6	1-1/2	Moldon Rubber / Aluminum Core	Ball	350	3J-6-61-615	3J-6-62-615	7	7-1/2	5-1/16
6	1-1/2	Advantage TPR / Flat	Roller	375	3J-6-61-215GF	3J-6-62-215GF	6	7-1/2	5-1/16
6	1-1/2	PolyLoc / Blue	Roller	500	3J-6-61-215P	3J-6-62-215P	6	7-1/2	5-1/16
6	1-1/2	Phenolic	Plain	500	3J-6-61-121	3J-6-62-121	6	7-1/2	5-1/16
6	1-1/2	Phenolic	Roller	500	3J-6-61-221	3J-6-62-221	6	7-1/2	5-1/16
6	1-1/2	Polyolefin	Delrin	500	3J-6-61-523	3J-6-62-523	6	7-1/2	5-1/16
6	1-1/2	Polyolefin	Roller	500	3J-6-61-525	3J-6-62-525	7	7-1/2	5-1/16
6	1-1/2	Moldon Polyurethane / Aluminum Core	Ball	500	3J-6-61-715	3J-6-62-715	7	7-1/2	5-1/16
8	1-1/2	Advantage TPR / Flat	Roller	500	3J-8-61-215GF	3J-8-62-215GF	8	9-1/2	6-1/2
8	1-1/2	PolyLoc / Grey	Roller	500	3J-8-61-215G	3J-8-62-215G	8	9-1/2	6-1/2
8	1-1/2	PolyLoc / Blue	Roller	500	3J-8-61-215P	3J-8-62-215P	8	9-1/2	6-1/2
8	1-1/2	Polyolefin	Delrin	500	3J-8-61-523	3J-8-62-523	8	9-1/2	6-1/2
8	1-1/2	Polyolefin	Roller	500	3J-8-61-525	3J-8-62-525	8	9-1/2	6-1/2

3B-SS-LEH SERIES – ELASTIC RUBBER GRAY / NYLON CORE

Casters: Pressed from high-quality, chromium-nickel stainless steel (material No. 1.4301/AISI 304), with double ball bearing in the swivel head, with strong central kingpin, bolted wheel axle. All metal parts are stainless steel and brackets are vibration-ground finished.

Wheels: Elastic solid rubber, smooth rolling quality, color grey, non-marking, 65° shore A, vulcanised, non-detachable connection, low rolling resistance. Wheel centres: Made of high-quality nylon, color black, shock and impact-resistant, corrosion-resistant, plain or stainless steel roller bearing or sealed ball bearing. As standard, ball bearing versions are supplied with bearing sealing.



Additional wheels available.
See Wheel Section or consult Acorn™.



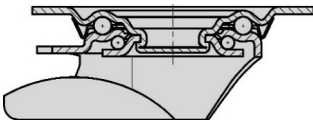
3B-SS-LEH SERIES CASTER SPECIFICATIONS

Wheel Type (Wheel Code)	Dia. (mm)	Width (mm)	Capacity (lbs)	Bearing Type	OAH (mm)	Plate (mm)	Bolt Hole (mm)	Offset Swl (mm)	Part Number
ELASTIC RUBBER GRAY / NYLON CORE (ERG/NN) WHEELS WITH PRECISION BALL BEARINGS									
	100	38	330	Prec. Ball	125	70	13	36	3B-LEH-SS-ERG/NN-P-100/38-S
	125	40	330	Prec. Ball	150	70	13	40	3B-LEH-SS-ERG/NN-P-125/40-S
	160	50	660	Prec. Ball	195	88	13	54	3B-LEH-SS-ERG/NN-P-160/50-S
	200	50	660	Prec. Ball	235	88	13	54	3B-LEH-SS-ERG/NN-P-200/50-S

LE/SS SERIES – ELASTIC RUBBER GRAY / NYLON CORE

Casters: Pressed from high-quality, chromium-nickel stainless steel (material No. 1.4301/AISI 304), swivel bracket with double ball bearing in the swivel head, swivel head sealing, bolted wheel axle. All metal parts are stainless steel and brackets are vibration-ground finished.

Wheels: Elastic solid rubber, smooth rolling quality, color grey, non-marking, 65° shore A, vulcanised, non-detachable connection, low rolling resistance. Wheel centres: Made of high-quality nylon, color black, shock and impact-resistant, corrosion-resistant, plain or stainless steel roller bearing or sealed ball bearing. As standard, ball bearing versions are supplied with bearing sealing.



Additional wheels available.
See Wheel Section or consult Acorn™.



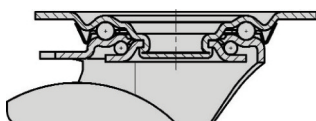
3B-SS-LE SERIES CASTER SPECIFICATIONS

Wheel Type (Wheel Code)	Dia. (mm)	Width (mm)	Cap. (lbs)	Bearing Type	OAH (mm)	Plate (mm)	Bolt Hole Spacing (mm)	Bolt Hole (mm)	Offset Swl (mm)	Part Number
ELASTIC RUBBER GRAY / NYLON CORE (ERG/NN) WHEELS WITH PRECISION BALL BEARINGS										
	100	38	330	Prec. Ball	125	100 x 85	80 x 60	9	36	3B-LE-SS-TP1-ERG/NN-P-100/38-S
	125	40	330	Prec. Ball	150	100 x 85	80 x 60	9	40	3B-LE-SS-TP1-ERG/NN-P-125/40-S
	160	50	660	Prec. Ball	195	140 x 110	105 x 75-80	11	54	3B-LE-SS-TP2-ERG/NN-P-160/50-S
	200	50	660	Prec. Ball	235	100 x 85	80 x 60	9	54	3B-LE-SS-TP1-ERG/NN-P-200/50-S

3B-SS-L SERIES – ELASTIC RUBBER GRAY / NYLON CORE

Casters: Pressed from high-quality, chromium-nickel stainless steel (material No. 1.4301/AISI 304), swivel bracket with double ball bearing in the reinforced swivel head, swivel head sealing, strong central kingpin, bolted wheel axle. All metal parts are stainless steel and brackets are vibration-ground finished.

Wheels: Elastic solid rubber, smooth rolling quality, colorgrey, non-marking, 65° shore A, vulcanised, non-detachable connection, low rolling resistance. Wheel centres: Made of high-quality nylon, colorblack, shock and impact-resistant, corrosion-resistant, stainless steel roller or sealed ball bearing. As standard, ball bearing versions are supplied with bearing sealing.



Additional wheels available.
See Wheel Section or consult Acorn™.



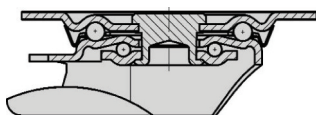
3B-SS-L SERIES CASTER SPECIFICATIONS

Wheel Type (Wheel Code)	Dia. (mm)	Width (mm)	Cap. (lbs)	Bearing Type	OAH (mm)	Plate (mm)	Bolt Hole Spacing (mm)	Bolt Hole (mm)	Offset Swl (mm)	Part Number
ELASTIC RUBBER GRAY / NYLON CORE (ERG/NN) WHEELS WITH PRECISION BALL BEARINGS										
	160	50	770	Prec. Ball	195	140 x 110	105 x 75-80	11	60	3B-LP-SS-TP2-ERG/NN-P-160/50-S
	200	50	880	Prec. Ball	235	140 x 110	105 x 75-80	11	65	3B-LP-SS-TP2-ERG/NN-P-200/50-S

3B-SS-LX SERIES – POLYURETHANE / NYLON CORE

Casters: Pressed from high-quality, chromium-nickel stainless steel (material No. 1.4301/AISI 304), swivel bracket with double ball bearing in the reinforced swivel head, swivel head sealing, strong central kingpin, bolted wheel axle. All metal parts are stainless steel and brackets are vibration-ground finished.

Wheels: Made of injection-moulded polyurethane, colorbrown, non-marking, 98° shore A, non-staining, abrasion-resistant, floor-saving, low-noise operation, low rolling resistance, excellent positive and non-positive connection with the wheel centre. Alternatively available with soft tread with improved skid resistance, colorgrey, 92° shore A, refer to Variants / Accessories. Wheel centres: Made of high-quality nylon, colornatural white, shock and impact-resistant, corrosion-resistant, plain, stainless steel roller or ball bearing.



Additional wheels available.
See Wheel Section or consult Acorn™.



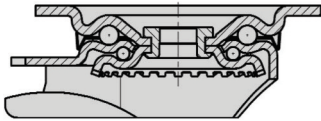
3B-SS-LX SERIES CASTER SPECIFICATIONS

Wheel Type (Wheel Code)	Dia. (mm)	Width (mm)	Cap. (lbs)	Bearing Type	OAH (mm)	Plate (mm)	Bolt Hole Spacing (mm)	Bolt Hole (mm)	Offset Swl (mm)	Part Number
POLYURETHANE / NYLON CORE (PY/NN) WHEELS WITH PRECISION BALL BEARINGS										
	150	40	880	Prec. Ball	190	140 x 110	105 x 75-80	11	60	3B-LX-SS-TP2-PY/NN-P-150/40-S
	160	40	880	Prec. Ball	165	140 x 110	105 x 75-80	11	60	3B-LX-SS-TP2-PY/NN-P-150/40-S
	200	50	880	Prec. Ball	235	140 x 110	105 x 75-80	11	65	3B-LX-SS-TP2-PY/NN-P-150/40-S

3B-SS-LKX SERIES – HEAVY DUTY NYLON

Casters: Pressed from heavy, high-quality, chromium-nickel stainless steel (material No. 1.4301/AISI 304), reinforced fork and top plate, double ball bearing in the swivel head, swivel head sealing, very strong central kingpin. All metal parts are stainless steel and brackets are vibration-ground finished.

Wheels: Made of high-quality nylon, very rugged, color natural white, high abrasion resistance, low rolling resistance, smooth running performance on even floors, shock and impact-resistant, corrosion-resistant, high chemical resistance to alcohol, salts, greases and certain acids and lyes in diluted concentration, plain or stainless steel ball bearing.



Additional wheels available.
See Wheel Section or consult Acorn™.



3B-SS-LKX SERIES CASTER SPECIFICATIONS

Wheel Type (Wheel Code)	Dia. (mm)	Width (mm)	Capacity (lbs)	Bearing Type	OAH (mm)	Plate (mm)	Bolt Hole (mm)	Bolt Hole Spacing	Offset Swl (mm)	Part Number
HEAVY DUTY NYLON (NN/HD) WHEELS WITH PRECISION BALL BEARINGS										
	125	50	1650	Ball bearing	170	140 x 110	105 x 75-80	11	55	3B-LKX-SS-TP2-NN/HD-P-125/50-S
	150	50	1760	Ball bearing	197	140 x 110	105 x 75-80	11	63	3B-LKX-SS-TP2-NN/HD-P-150/50-S
	200	50	1760	Ball bearing	245	140 x 110	105 x 75-80	11	65	3B-LKX-SS-TP2-NN/HD-P-200/50-S