



Nylacron Wheels with Precision Ball Bearings for any application (NY/MD, NY/HSB, NY/MC, NY/GF)

Nylacron™ wheels with proper sized precision bearings are made to fit in any rig hub length and axle size. Nylacron™ wheels have greater load capacity ratings with better rollability while requiring less maintenance and have longer life.



Series	Caster Type	Page #
8-94BBL	Kingpin - Hot Forged	2-4
8-94TRL	Kingpin - Hot Forged	5-7
8-94K	Kingpinless.....	8-10
8-94KHD	Kingpinless HD.....	11-13
8-94KR/DW	Kingpinless - Dual Wheel	14-15
8-94K/SA	Kingpinless - Shock Absorbing Rigs.....	16-17
8-94KHD/SA	Kingpinless - Shock Absorbing Rigs.....	16-17

VULKOLLAN® & Premium Urethanes

with Precision Ball Bearings for Any Application

Urethane Soft (75-80A)
Cast Iron Core



Vulkollan® 93A
Cast Iron Core



Urethane 93A
Cast Iron Core



FEATURES

Load Capacity Up to 6000 lbs.

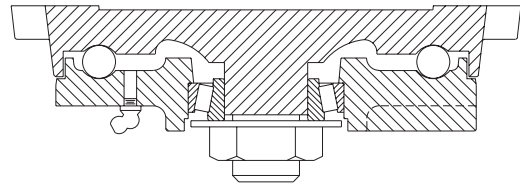
- Top Plate / Yoke Base: 1/2" thick 1045 AISI drop forged steel
- Swivel Load: 5" diameter ball load race with 1/2" steel balls hardened for greater resistance to wear and brinelling. Protected by a forged labyrinth skirt.
- Thrust Bearing: 1-1/4" tapered roller bearing
- Legs: 3/8" x 4" formed steel plate welded inside and out to yoke base and rigid top.
- King Bolt: 1-1/4" diameter integrally forged with top plate for maximum strength
- Axle: 1" solid axle with lock nut
- Lubrication: Zerk fitting in swivel section and wheel hub for ease of lubrication



BRAKE OPTIONS

PCB	Poly Cam Brake
SSB	Single Side Brake
DSB	Double Side Brake
FCB	Face Contact Brake
WB	Wrap Around Brake

SWIVEL CROSS SECTION



SWIVEL RIG CODES

SLW	Swivel Lock Welded
------------	--------------------

MOUNTING PLATE (SWIVEL / RIGID)

Top Plate	Plate Size	Bolt Hole Spacing	Bolt Size
94S Swivel	6 1/2" x 7 1/2"	4 1/2" x 6"	1/2"
94R Rigid	6" x 7 1/2"	4 1/2" x 6"	1/2"
C/S Swivel	6 1/2" x 8"	4 7/8" x 6 3/4"	5/8"
C/R Rigid	6" x 8"	4 7/8" x 6 3/4"	5/8"

SPECIFICATIONS

Wheel Type (Wheel Code)	Diameter (in.)	Width (in.)	Capacity (lbs.)	OAH (in.)	Swivel Lead (in.)	Approx. Wt. (lbs.)	Swivel Part Number Add B, P, PL, R or T*
FORGED STEEL (FS) WHEELS WITH ROLLER BEARINGS							
	6	2-1/2	4000	8-1/2	2-1/2	37	8-94BBL-FS-R-0625-S
	6	3	5000	8-1/2	2-1/2	45	8-94BBL-FS-R-0630-S
	8	3	4500	10-1/2	2-1/2	44	8-94BBL-FS-R-0830-S
	8	4	5000	10-1/2	2-1/2	47	8-94BBL-FS-R-0840-S
	10	3	5000	12-1/2	2-1/2	53-3/4	8-94BBL-FS-R-1030-S
	10	4	5000	12-1/2	2-1/2	73-3/4	8-94BBL-FS-R-1040-S
DUCTILE IRON / CROWNED TREAD (DU/CT) WHEELS WITH ROLLER BEARINGS							
	6	2-1/2	3500	8-1/2	2-1/2	37	8-94BBL-DU/CT-R-0625-S
	6	3	6000	8-1/2	2-1/2	45	8-94BBL-DU/CT-R-0630-S
	8	3	6000	10-1/2	2-1/2	46	8-94BBL-DU/CT-R-0830-S
	10	3	6000	12-1/2	2-1/2	53	8-94BBL-DU/CT-R-1030-S
DUCTILE IRON (DU) WHEELS WITH ROLLER BEARINGS							
	12	3-1/2	5000	15-1/2	2-1/2	67-1/2	8-94BBL-DU-R-1235-S
CAST IRON (CA) WHEELS WITH ROLLER BEARINGS							
	6	3	2800	8-1/2	2-1/2	35	8-94BBL-CA-R-0630-S
	8	3	2800	10-1/2	2-1/2	46	8-94BBL-CA-R-0830-S
	8	4	4000	10-1/2	2-1/2	52-1/2	8-94BBL-CA-R-0840-S
	10	3	2800	12-1/2	2-1/2	48	8-94BBL-CA-R-1030-S
	12	3	2800	15-1/2	2-1/2	70	8-94BBL-CA-R-1230-S
	12	3-1/2	4000	15-1/2	2-1/2	80	8-94BBL-CA-R-1235-S
CAST IRON / V-GROOVE (CA/VG) WHEELS WITH ROLLER BEARINGS							
	8	3	2800	10-1/2	2-1/2	46	8-94BBL-CA/VG-R-0830-S
	10	3	2800	12-1/2	2-1/2	50	8-94BBL-CA/VG-R-1030-S
NYLACRON™ MD (NY/MD) WHEELS WITH PRECISION BALL BEARINGS							
	6	2-1/2	6000	8-1/2	2-1/2	36	8-94BBL-NY/MD-P-0625-S
	6	3	6000	8-1/2	2-1/2	37-1/4	8-94BBL-NY/MD-P-0630-S
	8	2-1/2	6000	10-1/2	2-1/2	41	8-94BBL-NY/MD-P-0825-S
	8	3	6000	10-1/2	2-1/2	41	8-94BBL-NY/MD-P-0830-S
	10	2-1/2	6000	12-1/2	2-1/2	46	8-94BBL-NY/MD-P-1025-S
	10	3	6000	12-1/2	2-1/2	45-1/2	8-94BBL-NY/MD-P-1030-S
	12	3	6000	15-1/2	2-1/2	49	8-94BBL-NY/MD-P-1230-S
	12	3-1/2	6000	15-1/2	2-1/2	52	8-94BBL-NY/MD-P-1235-S
	12	4	6000	15-1/2	2-1/2	60	8-94BBL-NY/MD-P-1240-S
PHENOLIC / TEXITE (TM) WHEELS WITH ROLLER BEARINGS							
	6	2-1/2	1620	8-1/2	2-1/2	38	8-94BBL-TM-R-0625-S
	8	3	2500	10-1/2	2-1/2	32-1/4	8-94BBL-TM-R-0830-S
	10	2-1/2	2500	12-1/2	2-1/2	46	8-94BBL-TM-R-1025-S
	10	3	2900	12-1/2	2-1/2	46	8-94BBL-TM-R-1030-S
	12	3-1/2	4000	15-1/2	2-1/2	49-3/4	8-94BBL-TM-R-1235-S
LAMINATED PHENOLIC / TEXITE (TL) WHEELS WITH ROLLER BEARINGS							
	6	3	2000	8-1/2	2-1/2	29-1/2	8-94BBL-TL-R-0630-S
	8	3	2500	10-1/2	2-1/2	32-1/4	8-94BBL-TL-R-0830-S
	10	3	3000	12-1/2	2-1/2	46	8-94BBL-TL-R-1030-S
	12	3-1/2	4000	15-1/2	2-1/2	49-3/4	8-94BBL-TL-R-1235-S
VULKOLLAN™ / CAST IRON CORE (VU/CA) WHEELS WITH PRECISION BALL BEARINGS							
	6	2-1/2	1950	8-1/2	2-1/2	36	8-94BBL-VU/CA-P-0625-S
	6	3	2450	8-1/2	2-1/2	37-1/4	8-94BBL-VU/CA-P-0630-S
	8	3	3025	10-1/2	2-1/2	41	8-94BBL-VU/CA-P-0830-S
	10	3	3600	12-1/2	2-1/2	45-1/2	8-94BBL-VU/CA-P-1030-S
THICK TREAD VULKOLLAN™ (VX) WHEELS WITH PRECISION BALL BEARINGS							
	6	3	2450	8-1/2	2-1/2	37-1/4	8-94BBL-VX-P-0630-S
	8	3	3025	10-1/2	2-1/2	41-1/2	8-94BBL-VX-P-0830-S
(Continued on Next Page)	10	3	3600	12-1/2	2-1/2	46	8-94BBL-VX-P-1030-S

SPECIFICATIONS

Wheel Type (Wheel Code)	Diameter (in.)	Width (in.)	Capacity (lbs.)	OAH (in.)	Swivel Lead (in.)	Approx. Wt. (lbs.)	Swivel Part Number Add B, P, PL, R or T*
POLYURETHANE / CAST IRON CORE (PY/CA) WHEELS WITH PRECISION BALL BEARINGS							
	6	2-1/2	1600	8-1/2	2-1/2	32	8-94BBL-PY/CA-P-0625-S
	6	3	2000	8-1/2	2-1/2	35	8-94BBL-PY/CA-P-0630-S
	8	2-1/2	2000	10-1/2	2-1/2	40	8-94BBL-PY/CA-P-0825-S
	8	3	2500	10-1/2	2-1/2	42	8-94BBL-PY/CA-P-0830-S
	10	2-1/2	2200	12-1/2	2-1/2	44	8-94BBL-PY/CA-P-1025-S
	10	3	3000	12-1/2	2-1/2	46	8-94BBL-PY/CA-P-1030-S
	12	2-1/2	2500	15-1/2	2-1/2	48	8-94BBL-PY/CA-P-1225-S
	12	3	3500	15-1/2	2-1/2	50	8-94BBL-PY/CA-P-1230-S
THICK TREAD POLYURETHANE / CAST IRON CORE (PY/TT/CA) WHEELS WITH PRECISION BALL BEARINGS							
	6	3	2040	8-1/2	2-1/2	37-1/4	8-94BBL-PY/TT-P-0630-S
	8	3	2520	10-1/2	2-1/2	41-1/2	8-94BBL-PY/TT-P-0830-S
	8	4	3500	10-1/2	2-1/2	48	8-94BBL-PY/TT-P-0840-S
	10	3	3000	12-1/2	2-1/2	46	8-94BBL-PY/TT-P-1030-S
	10	4	4200	12-1/2	2-1/2	55	8-94BBL-PY/TT-P-1040-S
	12	4	4800	15-1/2	2-1/2	60	8-94BBL-PY/TT-P-1240-S
POLYURETHANE / ALUMINUM CORE (PY/AL) WHEELS WITH PRECISION BALL BEARINGS							
	8	3	2520	10-1/2	2-1/2	32	8-94BBL-PY/AL-P-0830-S
	10	3	3000	12-1/2	2-1/2	36	8-94BBL-PY/AL-P-1030-S
MOLDON RUBBER / CAST IRON CORE (MR/CA) WHEELS WITH PRECISION BALL BEARINGS							
	8	3	900	10-1/2	2-1/2	36-3/4	8-94BBL-MR/CA-P-0830-S
	10	3	1000	12-1/2	2-1/2	39-3/4	8-94BBL-MR/CA-P-1030-S
	10	4	1400	12-1/2	2-1/2	50-3/4	8-94BBL-MR/CA-P-1040-S
	12	3-1/2	1500	15-1/2	2-1/2	55-3/4	8-94BBL-MR/CA-P-1235-S
	12	4	1600	15-1/2	2-1/2	55-3/4	8-94BBL-MR/CA-P-1240-S
HEAVY DUTY MOLDON RUBBER / CAST IRON CORE (MH/CA) WITH PRECISION BALL BEARINGS							
	10	3	1800	12-1/2	2-1/2	39-3/4	8-94BBL-MH/CA-P-1030-S

*Add "B" for Ball Bearing, "P" for Precision Bearing, "PL" for Plain Bearing, "R" for Roller Bearing or "T" for Tapered Bearing.

All load ratings are for manual operation at 2 mph.

For **Rigid Casters**, change "S" to "R" at the end of the part number.

All **Rig Options** should be added to the end of the part number.

VULKOLLAN® & Premium Urethanes

with Precision Ball Bearings for Any Application



Vulkollan® 93A
Cast Iron Core



Urethane 93A
Cast Iron Core



**Urethane Soft
75-80A**
Cast Iron Core

Nylacron™ Wheels

With Precision Ball Bearings for Any Application:

(NY/MD, NY/HSB, NY/MC, NY/GF)

Nylacron™ wheels with proper sized precision bearings are made to fit in any rig hub length and axle size. Nylacron™ wheels have greater load capacity ratings with better rollability while requiring less maintenance and have longer life.



FEATURES

Load Capacity Up to 10,000 lbs.

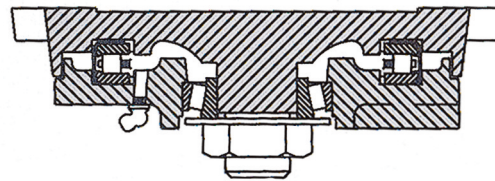
- Top Plate / Yoke Base: 1/2" thick 1045 AISI drop forged steel
- Swivel Load Race: Precision tapered roller bearing which has 5" outside diameter for increased capacity
- Thrust Bearing: 1-1/4" tapered roller bearing
- Legs: 3/8" x 4" formed steel plate welded inside and out to yoke base and rigid top.
- King Bolt: 1-1/4" diameter integrally forged with top plate for maximum strength
- Axle: 1" solid axle with lock nut
- Lubrication: Zerk fitting in swivel section and wheel hub for ease of lubrication



BRAKE OPTIONS

PCB	Poly Cam Brake
SSB	Single Side Brake
DSB	Double Side Brake
FCB	Face Contact Brake
WB	Wrap Around Brake

SWIVEL CROSS SECTION



SWIVEL RIG CODES

SLW	Swivel Lock Welded
------------	--------------------

MOUNTING PLATE (SWIVEL / RIGID)

Top Plate	Plate Size	Bolt Hole Spacing	Bolt Size
94S Swivel	6 1/2" x 7 1/2"	4 1/2" x 6"	1/2"
94R Rigid	6" x 7 1/2"	4 1/2" x 6"	1/2"
C/S Swivel	6 1/2" x 8"	4 7/8" x 6 3/4"	5/8"
C/R Rigid	6" x 8"	4 7/8" x 6 3/4"	5/8"

SPECIFICATIONS

Wheel Type (Wheel Code)	Diameter (in.)	Width (in.)	Capacity (lbs.)	OAH (in.)	Swivel Lead (in.)	Approx. Wt. (lbs.)	Swivel Part Number Add B, P, PL, R or T*
FORGED STEEL (FS) WHEELS WITH ROLLER BEARINGS							
	6	2-1/2	4000	8-1/2	2-1/2	37	8-94TRL-FS-R-0625-S
	6	3	5000	8-1/2	2-1/2	45	8-94TRL-FS-R-0630-S
	8	3	4500	10-1/2	2-1/2	44	8-94TRL-FS-R-0830-S
	8	4	5000	10-1/2	2-1/2	47	8-94TRL-FS-R-0840-S
	10	3	5000	12-1/2	2-1/2	53-3/4	8-94TRL-FS-R-1030-S
	10	4	5000	12-1/2	2-1/2	73-3/4	8-94TRL-FS-R-1040-S
DUCTILE IRON / CROWNED TREAD (DU/CT) WHEELS WITH ROLLER BEARINGS							
	6	2-1/2	3500	8-1/2	2-1/2	37	8-94TRL-DU/CT-R-0625-S
	6	3	6000	8-1/2	2-1/2	45	8-94TRL-DU/CT-R-0630-S
	8	3	6000	10-1/2	2-1/2	46	8-94TRL-DU/CT-R-0830-S
	10	3	6000	12-1/2	2-1/2	53	8-94TRL-DU/CT-R-1030-S
DUCTILE IRON (DU) WHEELS WITH ROLLER BEARINGS							
	12	3-1/2	5000	15-1/2	2-1/2	67-1/2	8-94TRL-DU-R-1235-S
CAST IRON (CA) WHEELS WITH ROLLER BEARINGS							
	6	3	2800	8-1/2	2-1/2	45	8-94TRL-CA-R-0630-S
	8	3	2800	10-1/2	2-1/2	47	8-94TRL-CA-R-0830-S
	8	4	4000	10-1/2	2-1/2	52-1/2	8-94TRL-CA-R-0840-S
	10	3	2800	12-1/2	2-1/2	54	8-94TRL-CA-R-1030-S
	12	3	2800	15-1/2	2-1/2	60	8-94TRL-CA-R-1230-S
	12	3-1/2	4000	15-1/2	2-1/2	67-1/2	8-94TRL-CA-R-1235-S
CAST IRON / V-GROOVE (CA/VG) WHEELS WITH ROLLER BEARINGS							
	8	3	2800	10-1/2	2-1/2	44	8-94TRL-CA/VG-R-0830-S
	10	3	2800	12-1/2	2-1/2	53	8-94TRL-CA/VG-R-1030-S
NYLACRON™ MD (NY/MD) WHEELS WITH PRECISION BALL BEARINGS							
	6	2-1/2	10,000	8-1/2	2-1/2	36	8-94TRL-NY/MD-P-0625-S
	6	3	10,000	8-1/2	2-1/2	38	8-94TRL-NY/MD-P-0630-S
	8	2-1/2	10,000	10-1/2	2-1/2	40	8-94TRL-NY/MD-P-0825-S
	8	3	10,000	10-1/2	2-1/2	42	8-94TRL-NY/MD-P-0830-S
	8	4	10,000	10-1/2	2-1/2	46	8-94TRL-NY/MD-P-0840-S
	10	2-1/2	10,000	12-1/2	2-1/2	44	8-94TRL-NY/MD-P-1025-S
	10	3	10,000	12-1/2	2-1/2	46	8-94TRL-NY/MD-P-1030-S
	10	4	10,000	12-1/2	2-1/2	50	8-94TRL-NY/MD-P-1040-S
	12	2-1/2	10,000	15-1/2	2-1/2	50	8-94TRL-NY/MD-P-1225-S
	12	3	10,000	15-1/2	2-1/2	52	8-94TRL-NY/MD-P-1230-S
	12	3-1/2	10,000	15-1/2	2-1/2	54	8-94TRL-NY/MD-P-1235-S
	12	4	10,000	15-1/2	2-1/2	60	8-94TRL-NY/MD-P-1240-S
PHENOLIC / TEXITE (TM) WHEELS WITH ROLLER BEARINGS							
	6	2-1/2	1620	8-1/2	2-1/2	38	8-94TRL-TM-R-0625-S
	8	3	2500	10-1/2	2-1/2	32-1/4	8-94TRL-TM-R-0830-S
	10	2-1/2	2500	12-1/2	2-1/2	46	8-94TRL-TM-R-1025-S
	10	3	2900	12-1/2	2-1/2	46	8-94TRL-TM-R-1030-S
	12	3-1/2	4000	15-1/2	2-1/2	49-3/4	8-94TRL-TM-R-1235-S
LAMINATED PHENOLIC / TEXITE (TL) WHEELS WITH ROLLER BEARINGS							
	6	3	2000	8-1/2	2-1/2	29-1/2	8-94TRL-TL-R-0630-S
	8	3	2500	10-1/2	2-1/2	32-1/4	8-94TRL-TL-R-0830-S
	10	3	3000	12-1/2	2-1/2	46	8-94TRL-TL-R-1030-S
	12	3-1/2	4000	15-1/2	2-1/2	49-3/4	8-94TRL-TL-R-1235-S
VULKOLLAN™ / CAST IRON CORE (VU/CA) WHEELS WITH PRECISION BALL BEARINGS							
	6	2-1/2	1950	8-1/2	2-1/2	36	8-94TRL-VU/CA-P-0625-S
	6	3	2450	8-1/2	2-1/2	37-1/4	8-94TRL-VU/CA-P-0630-S
	8	3	3025	10-1/2	2-1/2	41	8-94TRL-VU/CA-P-0830-S
	10	3	3600	12-1/2	2-1/2	45-1/2	8-94TRL-VU/CA-P-1030-S

(Continued on Next Page)

SPECIFICATIONS

Wheel Type (Wheel Code)	Diameter (in.)	Width (in.)	Capacity (lbs.)	OAH (in.)	Swivel Lead (in.)	Approx. Wt. (lbs.)	Swivel Part Number Add B, P, PL, R or T*
THICK TREAD VULKOLLAN™ (VX) WHEELS WITH PRECISION BALL BEARINGS							
	6	3	2450	8-1/2	2-1/2	37-1/4	8-94TRL-VX-P-0630-S
	8	3	3025	10-1/2	2-1/2	41-1/2	8-94TRL-VX-P-0830-S
	10	3	3600	12-1/2	2-1/2	46	8-94TRL-VX-P-1030-S
POLYURETHANE / CAST IRON CORE (PY/CA) WHEELS WITH PRECISION BALL BEARINGS							
	6	2-1/2	1600	8-1/2	2-1/2	37	8-94TRL-PY/CA-P-0625-S
	6	3	2000	8-1/2	2-1/2	42	8-94TRL-PY/CA-P-0630-S
	8	2-1/2	2000	10-1/2	2-1/2	44	8-94TRL-PY/CA-P-0825-S
	8	3	2500	10-1/2	2-1/2	46	8-94TRL-PY/CA-P-0830-S
	10	2-1/2	2200	12-1/2	2-1/2	50	8-94TRL-PY/CA-P-1025-S
	10	3	3000	12-1/2	2-1/2	54	8-94TRL-PY/CA-P-1030-S
	12	2-1/2	2500	15-1/2	2-1/2	70	8-94TRL-PY/CA-P-1225-S
	12	3	3500	15-1/2	2-1/2	73	8-94TRL-PY/CA-P-1230-S
THICK TREAD POLYURETHANE / CAST IRON CORE (PY/TT/CA) WHEELS WITH PRECISION BALL BEARINGS							
	6	3	2040	8-1/2	2-1/2	37-1/4	8-94TRL-PY/TT-P-0630-S
	8	3	2520	10-1/2	2-1/2	41-1/2	8-94TRL-PY/TT-P-0830-S
	8	4	3500	10-1/2	2-1/2	48	8-94TRL-PY/TT-P-0840-S
	10	3	3000	12-1/2	2-1/2	46	8-94TRL-PY/TT-P-1030-S
	10	4	4200	12-1/2	2-1/2	55	8-94TRL-PY/TT-P-1040-S
	12	4	4800	15-1/2	2-1/2	60	8-94TRL-PY/TT-P-1240-S
POLYURETHANE / ALUMINUM CORE (PY/AL) WHEELS WITH PRECISION BALL BEARINGS							
	8	3	2520	10-1/2	2-1/2	41	8-94TRL-PY/AL-P-0830-S
	10	3	3000	12-1/2	2-1/2	46	8-94TRL-PY/AL-P-1030-S
MOLDON RUBBER / CAST IRON CORE (MR/CA) WHEELS WITH PRECISION BALL BEARINGS							
	8	3	900	10-1/2	2-1/2	36-3/4	8-94TRL-MR/CA-P-0830-S
	10	3	1000	12-1/2	2-1/2	39-3/4	8-94TRL-MR/CA-P-1030-S
	10	4	1400	12-1/2	2-1/2	50-3/4	8-94TRL-MR/CA-P-1040-S
	12	3-1/2	1500	15-1/2	2-1/2	55-3/4	8-94TRL-MR/CA-P-1235-S
	12	4	1600	15-1/2	2-1/2	55-3/4	8-94TRL-MR/CA-P-1240-S
HEAVY DUTY MOLDON RUBBER / CAST IRON CORE (MH/CA) WITH PRECISION BALL BEARINGS							
	10	3	1800	12-1/2	2-1/2	39-3/4	8-94TRL-MH/CA-P-1030-S

*Add "B" for Ball Bearing, "P" for Precision Bearing, "PL" for Plain Bearing, "R" for Roller Bearing or "T" for Tapered Bearing.

All load ratings are for manual operation at 2 mph.

For **Rigid Casters**, change "S" to "R" at the end of the part number.

All **Rig Options** should be added to the end of the part number.

VULKOLLAN® & Premium Urethanes

with Precision Ball Bearings for Any Application



Vulkollan® 93A
Cast Iron Core



Urethane 93A
Cast Iron Core



Urethane Soft 75-80A
Cast Iron Core

Nylacron™ Wheels

With Precision Ball Bearings for Any Application:

(NY/MD, NY/HSB, NY/MC, NY/GF)

Nylacron™ wheels with proper sized precision bearings are made to fit in any rig hub length and axle size. Nylacron™ wheels have greater load capacity ratings with better rollability while requiring less maintenance and have longer life.



FEATURES

Load Capacity Up to 8350 lbs.

- Top Plate / Yoke Base: 1/2" thick 1045 AISI steel one-piece forging precision machined and long life
- Swivel Section: 3/4" ball bearings mounted in 4-1/2" precision hardened and machined raceway
- Legs: 3/8" thick steel welded to yoke base using 100,000 psi weld filler
- Axle: 1" solid axle with lock nut
- Spring Loaded Shock Absorbing Casters: Specifications and CAD dwgs available for all sizes
- Dual Wheel Casters: Specifications and CAD dwgs available for all sizes



Vulkollan™ Wheel

Nylacron™ MD Wheel

RIG OPTION CODES

- NY** Notched Yoke
- L** Swivel Lock Welded
- SL** Swivel Lock Field Attachable

BRAKE OPTIONS

- SSB** Single Side Brake
- DSB** Double Side Brake
- PCB** Poly Cam Brake
- FCB** Face Contact Brake
- CWB** Cam Wheel Brake

SWIVEL CROSS SECTION



MOUNTING PLATE

Top Plate	Plate Size	Bolt Hole Spacing	Bolt Size
94	6 1/4" x 7 1/2"	4 1/8" x 6" slotted to 4 1/2" x 6 1/8"	1/2"

VULKOLLAN® & Premium Urethanes

with Precision Ball Bearings for Any Application



Vulkollan® 93A
Cast Iron Core



Urethane 93A
Cast Iron Core



Urethane Soft 75-80A
Cast Iron Core

Nylacron™ Wheels

With Precision Ball Bearings for Any Application:
(NY/MD, NY/HSB, NY/MC, NY/GF)

Nylacron™ wheels with proper sized precision bearings are made to fit in any rig hub length and axle size. Nylacron™ wheels have greater load capacity ratings with better rollability while requiring less maintenance and have longer life.



SPECIFICATIONS

Wheel Type (Wheel Code)	Diameter (in.)	Width (in.)	Capacity (lbs.)	OAH (in.)	Swl. Lead (in.)	Swivel Part Number Add B, P, PL, R or T*
FORGED STEEL (FS) WHEELS WITH ROLLER BEARINGS						
	6	2-1/2	4000	8-1/2	1-3/4	8-94K-FS-R-0625-S
	8	2-1/2	4000	10-1/2	2-1/4	8-94K-FS-R-0825-S
	8	3	5000	10-1/2	2-1/4	8-94K-FS-R-0830-S
	10	3	5000	12-1/2	2-3/4	8-94K-FS-R-1030-S
	10	4	8350	12-1/2	2-3/4	8-94K-FS-R-1040-S
FORGED STEEL / V-GROOVED (FS/VG) WHEELS WITH ROLLER BEARINGS						
	6	3	6000	8-1/2	1-3/4	8-94K-FS/VG-R-0630-S
	8	4	6000	10-1/2	2-1/4	8-94K-FS/VG-R-0840-S
	10	4	8350	12-1/2	2-3/4	8-94K-FS/VG-R-1040-S
HEAVY DUTY FORGED STEEL (FH) WHEELS WITH ROLLER BEARINGS						
	8	3	6000	10-1/2	2-1/4	8-94K-FH-R-0830-S
	10	3	6000	12-1/2	2-3/4	8-94K-FH-R-1030-S
DUCTILE IRON / CROWN TREAD (DU/CT) WHEELS WITH ROLLER BEARINGS						
	6	2-1/2	3500	8-1/2	1-3/4	8-94K-DU/CT-R-0625-S
	6	3	6000	8-1/2	1-3/4	8-94K-DU/CT-R-0630-S
	8	3	6000	10-1/2	2-1/4	8-94K-DU/CT-R-0830-S
	10	3	6000	12-1/2	2-3/4	8-94K-DU/CT-R-1030-S
CAST IRON (CA) WHEELS WITH ROLLER BEARINGS						
	6	3	2800	8-1/2	1-3/4	8-94K-CA-R-0630-S
	8	2-1/2	2300	8-1/2	1-3/4	8-94K-CA-R-0825-S
	8	3	2800	10-1/2	2-1/4	8-94K-CA-R-0830-S
	8	4	4000	10-1/2	2-1/4	8-94K-CA-R-0840-S
	10	3	2800	12-1/2	2-3/4	8-94K-CA-R-1030-S
	10	4	4000	12-1/2	2-3/4	8-94K-CA-R-1040-S
CAST IRON / V-GROOVED (CA/VG) WHEELS WITH ROLLER BEARINGS						
	6	2-1/2	2500	8-1/2	1-3/4	8-94K-CA/VG-R-0625-S
	8	2-1/2	2500	10-1/2	2-1/4	8-94K-CA/VG-R-0825-S
	8	3	4000	10-1/2	2-1/4	8-94K-CA/VG-R-0830-S
NYLACRON™ MD (NY/MD) WHEELS WITH PRECISION BALL BEARINGS						
	6	2-1/2	8350	8-1/2	1-3/4	8-94K-NY/MD-P-0625-S
	6	3	8350	8-1/2	1-3/4	8-94K-NY/MD-P-0630-S
	8	2-1/2	8350	10-1/2	2-1/4	8-94K-NY/MD-P-0825-S
	8	3	8350	10-1/2	2-1/4	8-94K-NY/MD-P-0830-S
	8	4	8350	10-1/2	2-1/4	8-94K-NY/MD-P-0840-S
	10	2-1/2	8350	12-1/2	2-3/4	8-94K-NY/MD-P-1025-S
	10	3	8350	12-1/2	2-3/4	8-94K-NY/MD-P-1030-S
	10	4	8350	12-1/2	2-3/4	8-94K-NY/MD-P-1040-S
	12	2-1/2	8350	15-1/2	3-5/8	8-94K-NY/MD-P-1225-S
	12	3	8350	15-1/2	3-5/8	8-94K-NY/MD-P-1230-S
	12	3-1/2	8350	15-1/2	3-5/8	8-94K-NY/MD-P-1235-S
	12	4	8350	15-1/2	3-5/8	8-94K-NY/MD-P-1240-S
	14	3	8350	18	4-3/8	8-94K-NY/MD-P-1430-S
	14	4	8350	18	4-3/8	8-94K-NY/MD-P-1440-S
PHENOLIC / TEXITE (TM) WHEELS WITH ROLLER BEARINGS						
	6	2-1/2	1600	8-1/2	1-3/4	8-94K-TM-R-0625-S
	6	3	2000	8-1/2	1-3/4	8-94K-TM-R-0630-S
	8	2-1/2	2000	10-1/2	2-1/4	8-94K-TM-R-0825-S
	8	3	2500	10-1/2	2-1/4	8-94K-TM-R-0830-S
	10	3	2900	12-1/2	2-3/4	8-94K-TM-R-1030-S
	12	3-1/2	4000	15-1/2	3-5/8	8-94K-TM-R-1235-S
	12	4	8000	15-1/2	3-5/8	8-94K-TM-R-1240-S
VULKOLLAN™ / CAST IRON CORE (VU/CA) WHEELS WITH PRECISION BALL BEARINGS						
	6	2-1/2	2350	8-1/2	1-3/4	8-94K-VU/CA-P-0625-S
	6	3	3000	8-1/2	1-3/4	8-94K-VU/CA-P-0630-S
	8	2-1/2	2900	10-1/2	2-1/4	8-94K-VU/CA-P-0825-S
	8	3	4000	10-1/2	2-1/4	8-94K-VU/CA-P-0830-S
	10	3	5000	12-1/2	2-3/4	8-94K-VU/CA-P-1030-S

(Continued on Next Page)

SPECIFICATIONS

Wheel Type (Wheel Code)	Diameter (in.)	Width (in.)	Capacity (lbs.)	OAH (in.)	Swl. Lead (in.)	Swivel Part Number Add B, P, PL, R or T*
THICK TREAD VULKOLLAN™ / CAST IRON CORE (VU/TT/CA) WHEELS WITH PRECISION BALL BEARINGS						
	6	3	3000	8-1/2	1-3/4	8-94K-VU/TT/CA-P-0630-S
	8	3	4000	10-1/2	2-1/4	8-94K-VU/TT/CA-P-0830-S
	10	3	5000	12-1/2	2-3/4	8-94K-VU/TT/CA-P-1030-S
POLYURETHANE / CAST IRON CORE (PY/CA) WHEELS WITH PRECISION BALL BEARINGS (ALL SIZES AVAILABLE WITH VULKOLLAN™ TREAD)						
	6	2-1/2	1620	8-1/2	1-3/4	8-94K-PY/CA-P-0625-S
	6	3	2040	8-1/2	1-3/4	8-94K-PY/CA-P-0630-S
	8	2-1/2	2010	10-1/2	2-1/4	8-94K-PY/CA-P-0825-S
	8	3	2520	10-1/2	2-1/4	8-94K-PY/CA-P-0830-S
	8	4	3500	10-1/2	2-1/4	8-94K-PY/CA-P-0840-S
	10	3	3000	12-1/2	2-3/4	8-94K-PY/CA-P-1030-S
	10	4	4200	12-1/2	2-3/4	8-94K-PY/CA-P-1040-S
	12	3-1/2	4110	15-1/2	3-5/8	8-94K-PY/CA-P-1235-S
	12	4	4800	15-1/2	3-5/8	8-94K-PY/CA-P-1240-S
	14	4	5000	18	4-3/8	8-94K-PY/CA-P-1440-S
THICK TREAD POLYURETHANE / CAST IRON CORE (PY/TT/CA) WHEELS WITH PRECISION BALL BEARINGS						
	6	3	2040	8-1/2	1-3/4	8-94K-PY/TT/CA-P-0630-S
	8	3	2520	10-1/2	2-1/4	8-94K-PY/TT/CA-P-0830-S
	8	4	3500	10-1/2	2-1/4	8-94K-PY/TT/CA-P-0840-S
	10	3	3000	12-1/2	2-3/4	8-94K-PY/TT/CA-P-1030-S
	10	4	4200	12-1/2	2-3/4	8-94K-PY/TT/CA-P-1040-S
	12	4	4800	15-1/2	3-5/8	8-94K-PY/TT/CA-P-1240-S
POLYURETHANE / ALUMINUM CORE (PY/AL) WHEELS WITH PRECISION BALL BEARINGS						
	8	2-1/2	670	10-1/2	2-1/4	8-94K-PY/AL-P-0825-S
	8	3	840	10-1/2	2-1/4	8-94K-PY/AL-P-0830-S
	10	2-1/2	1000	12-1/2	2-3/4	8-94K-PY/AL-P-1025-S
	10	3	1400	12-1/2	2-3/4	8-94K-PY/AL-P-1030-S
X-TREME PLUS SOLID POLYURETHANE (XP) WHEELS WITH PRECISION BALL BEARINGS						
	8	2-1/2	2000	10-1/2	2-1/4	8-94K-XP-P-0825-S
	8	3	2000	10-1/2	2-1/4	8-94K-XP-P-0830-S
	10	3	2500	12-1/2	2-3/4	8-94K-XP-P-1030-S
MOLDON RUBBER / CAST IRON CORE (MR/CA) WHEELS WITH PRECISION BALL BEARINGS						
	6	2-1/2	540	8-1/2	1-3/4	8-94K-MR/CA-P-0625-S
	6	3	680	8-1/2	1-3/4	8-94K-MR/CA-P-0630-S
	8	2-1/2	670	10-1/2	2-1/4	8-94K-MR/CA-P-0825-S
	8	3	840	10-1/2	2-1/4	8-94K-MR/CA-P-0830-S
	10	3	1000	12-1/2	2-3/4	8-94K-MR/CA-P-1030-S
	10	4	1400	12-1/2	2-3/4	8-94K-MR/CA-P-1040-S
	12	3-1/2	1370	15-1/2	3-5/8	8-94K-MR/CA-P-1235-S
	12	4	1600	15-1/2	3-5/8	8-94K-MR/CA-P-1240-S
	14	3	1280	18	4-3/8	8-94K-MR/CA-P-1430-S

*Add "B" for Ball Bearing, "P" for Precision Bearing, "PL" for Plain Bearing, "R" for Roller Bearing or "T" for Tapered Bearing.

All load ratings are for manual operation at 2 mph.

For **Rigid Casters**, change "S" to "R" at the end of the part number.

All **Rig Options** should be added to the end of the part number.

FEATURES

Load Capacity Up to 20,000 lbs.

- Top Plate: 1/2" thick AISI 1045 steel one-piece forging precision machined and for long life
- Swivel Section: 3/4" ball bearings mounted in a 4-1/2" precision machined raceway
- Legs: 3/8" thick steel welded to yoke base using 100,000 psi weld filler
- Axle: 1" diameter
- **Alternate or custom caster configurations available**



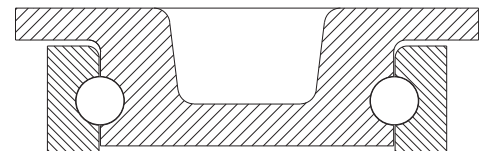
SWIVEL RIG OPTIONS

- SLHOFI** Swivel Lock - Hand Operated Field Installable
- SLFOFI** Swivel Lock - Foot Operated Field Installable
- NY600** Notched yoke base for swivel locks

BRAKE OPTIONS

- PCB** Poly Cam Brake
- FCB** Face Contact Brake
- SSB** Single Side Brake
- DSB** Double Side Brake

SWIVEL CROSS SECTION



MOUNTING PLATE

Top Plate	Plate Size	Bolt Hole Spacing	Bolt Size
94S (Swivel)	6 1/4" x 7 1/2"	4 1/2" x 6" slotted to 4 1/8" x 6 1/8"	1/2"
94R (Rigid)	6" x 7 1/2"	4 1/2" x 6" slotted to 4 1/8" x 6 1/8"	1/2"

VULKOLLAN® & Premium Urethanes

with Precision Ball Bearings for Any Application



Vulkollan® 93A
Cast Iron Core



Urethane 93A
Cast Iron Core



Urethane Soft 75-80A
Cast Iron Core

Nylacron™ Wheels

With Precision Ball Bearings for Any Application:

(NY/MD, NY/HSB, NY/MC, NY/GF)

Nylacron™ wheels with proper sized precision bearings are made to fit in any rig hub length and axle size. Nylacron™ wheels have greater load capacity ratings with better rollability while requiring less maintenance and have longer life.



SPECIFICATIONS

Wheel Type (Wheel Code)	Diameter (in.)	Width (in.)	Capacity (lbs.)	OAH (in.)	Swl. Lead (in.)	Swivel Part Number Add B, P, PL, R or T*
HEAVY DUTY FORGED STEEL (FH) WHEELS WITH ROLLER BEARINGS						
	8	3	6000	10-1/2	2-1/2	8-94KHD-FH-R-0830-S
	10	3	6000	12-1/2	2-1/2	8-94KHD-FH-R-1030-S
FORGED STEEL (FS) WHEELS WITH ROLLER BEARINGS						
	6	2-1/2	4000	8-1/2	2-1/2	8-94KHD-FS-R-0625-S
	8	2-1/2	4000	10-1/2	2-1/2	8-94KHD-FS-R-0825-S
	8	3	5000	10-1/2	2-1/2	8-94KHD-FS-R-0830-S
	10	3	5000	12-1/2	2-1/2	8-94KHD-FS-R-1030-S
	10	4	8350	12-1/2	2-1/2	8-94KHD-FS-R-1040-S
FORGED STEEL / V-GROOVED / CAST IRON (FS/VG/CA) WHEELS WITH ROLLER BEARINGS						
	6	3	6000	10-1/2	2-1/2	8-94KHD-FS/VG/CA-R-0630-S
	8	4	6000	10-1/2	2-1/2	8-94KHD-FS/VG/CA-R-0840-S
	10	4	8350	12-1/2	2-1/2	8-94KHD-FS/VG/CA-R-1040-S
DUCTILE IRON / CROWN TREAD (DU/CT) WHEELS WITH ROLLER BEARINGS						
	6	2-1/2	3500	8-1/2	2-1/2	8-94KHD-DU/CT-R-0625-S
	6	3	6000	10-1/2	2-1/2	8-94KHD-DU/CT-R-0630-S
	8	3	6000	10-1/2	2-1/2	8-94KHD-DU/CT-R-0830-S
	10	3	6000	12-1/2	2-1/2	8-94KHD-DU/CT-R-1030-S
CAST IRON (CA) WHEELS WITH ROLLER BEARINGS						
	6	3	2800	8-1/2	2-1/2	8-94KHD-CA-R-0630-S
	8	2-1/2	2300	10-1/2	2-1/2	8-94KHD-CA-R-0825-S
	8	3	2800	10-1/2	2-1/2	8-94KHD-CA-R-0830-S
	8	4	4000	10-1/2	2-1/2	8-94KHD-CA-R-0840-S
	10	3	2800	12-1/2	2-1/2	8-94KHD-CA-R-1030-S
	10	4	4000	12-1/2	2-1/2	8-94KHD-CA-R-1040-S
V-GROOVED CAST IRON (VG/CA) WHEELS WITH ROLLER BEARINGS						
	6	2-1/2	2500	8-1/2	2-1/2	8-94KHD-VG/CA-R-0625-S
	8	2-1/2	2500	10-1/2	2-1/2	8-94KHD-VG/CA-R-0825-S
	8	3	4000	10-1/2	2-1/2	8-94KHD-VG/CA-R-0830-S
NYLACRON™ MD (NY/MD) WHEELS WITH PRECISION BALL BEARINGS						
	6	2-1/2	8350	8-1/2	2-1/2	8-94KHD-NY/MD-P-0625-S
	6	3	8350	8-1/2	2-1/2	8-94KHD-NY/MD-P-0630-S
	8	2-1/2	8350	10-1/2	2-1/2	8-94KHD-NY/MD-P-0825-S
	8	3	8350	10-1/2	2-1/2	8-94KHD-NY/MD-P-0830-S
	8	4	10,000	10-1/2	2-1/2	8-94KHD-NY/MD-P-0840-S
	10	2-1/2	8350	12-1/2	2-1/2	8-94KHD-NY/MD-P-1025-S
	10	3	8350	12-1/2	2-1/2	8-94KHD-NY/MD-P-1030-S
	10	4	10,000	12-1/2	2-1/2	8-94KHD-NY/MD-P-1040-S
	12	2-1/2	8350	15-1/2	2-1/2	8-94KHD-NY/MD-P-1225-S
	12	3	8350	15-1/2	2-1/2	8-94KHD-NY/MD-P-1230-S
	12	3-1/2	8350	15-1/2	2-1/2	8-94KHD-NY/MD-P-1235-S
	12	4	10,000	15-1/2	2-1/2	8-94KHD-NY/MD-P-1240-S
PHENOLIC / TEXITE (TM) WHEELS WITH ROLLER BEARINGS						
	6	2-1/2	1600	8-1/2	2-1/2	8-94KHD-TM-R-0625-S
	6	3	2000	8-1/2	2-1/2	8-94KHD-TM-R-0630-S
	8	2-1/2	2000	10-1/2	2-1/2	8-94KHD-TM-R-0825-S
	8	3	2500	10-1/2	2-1/2	8-94KHD-TM-R-0830-S
	10	3	2900	12-1/2	2-1/2	8-94KHD-TM-R-1030-S
	12	3-1/2	4000	15-1/2	2-1/2	8-94KHD-TM-R-1235-S
	12	4	8000	15-1/2	2-1/2	8-94KHD-TM-R-1240-S
VULKOLLAN™ / CAST IRON CORE (VU/CA) WHEELS WITH PRECISION BALL BEARINGS						
	6	2-1/2	2350	8-1/2	2-1/2	8-94KHD-VU/CA-P-0625-S
	6	3	3000	8-1/2	2-1/2	8-94KHD-VU/CA-P-0630-S
	8	2-1/2	2900	10-1/2	2-1/2	8-94KHD-VU/CA-P-0825-S
	8	3	4000	10-1/2	2-1/2	8-94KHD-VU/CA-P-0830-S
	10	2-1/2	3450	12-1/2	2-1/2	8-94KHD-VU/CA-P-1025-S
	10	3	5000	12-1/2	2-1/2	8-94KHD-VU/CA-P-1030-S

(Continued on Next Page)

SPECIFICATIONS

Wheel Type (Wheel Code)	Diameter (in.)	Width (in.)	Capacity (lbs.)	OAH (in.)	Swl. Lead (in.)	Swivel Part Number Add B, P, PL, R or T*
THICK TREAD VULKOLLAN™ (VU/TT/CA) WHEELS WITH PRECISION BALL BEARINGS						
	6	2-1/2	2350	8-1/2	2-1/2	8-94KHD-VU/TT/CA-P-0625-S
	6	3	3000	8-1/2	2-1/2	8-94KHD-VU/TT/CA-P-0630-S
	8	2-1/2	2900	10-1/2	2-1/2	8-94KHD-VU/TT/CA-P-0825-S
	8	3	4000	10-1/2	2-1/2	8-94KHD-VU/TT/CA-P-0830-S
	10	2-1/2	3450	12-1/2	2-1/2	8-94KHD-VU/TT/CA-P-1025-S
	10	3	5000	12-1/2	2-1/2	8-94KHD-VU/TT/CA-P-1030-S
POLYURETHANE / CAST IRON CORE (PY/CA) WHEELS WITH PRECISION BALL BEARINGS						
	6	2-1/2	1620	8-1/2	2-1/2	8-94KHD-PY/CA-P-0625-S
	6	3	2040	8-1/2	2-1/2	8-94KHD-PY/CA-P-0630-S
	8	2-1/2	2010	10-1/2	2-1/2	8-94KHD-PY/CA-P-0825-S
	8	3	2520	10-1/2	2-1/2	8-94KHD-PY/CA-P-0830-S
	8	4	3500	10-1/2	2-1/2	8-94KHD-PY/CA-P-0840-S
	10	2-1/2	3000	12-1/2	2-1/2	8-94KHD-PY/CA-P-1025-S
	10	3	4200	12-1/2	2-1/2	8-94KHD-PY/CA-P-1030-S
	12	2-1/2	4110	15-1/2	2-1/2	8-94KHD-PY/CA-P-1225-S
	12	3	4800	15-1/2	2-1/2	8-94KHD-PY/CA-P-1230-S
POLYURETHANE / CAST IRON CORE (PY/CA) WHEELS WITH PRECISION BALL BEARINGS						
	6	2-1/2	1600	8-1/2	2-1/2	8-94KHD-PY/CA-P-0625-S
	6	3	2000	8-1/2	2-1/2	8-94KHD-PY/CA-P-0630-S
	8	2-1/2	2000	10-1/2	2-1/2	8-94KHD-PY/CA-P-0825-S
	8	3	2500	10-1/2	2-1/2	8-94KHD-PY/CA-P-0830-S
	10	2-1/2	2200	12-1/2	2-1/2	8-94KHD-PY/CA-P-1025-S
	10	3	3000	12-1/2	2-1/2	8-94KHD-PY/CA-P-1030-S
	12	2-1/2	2500	15-1/2	2-1/2	8-94KHD-PY/CA-P-1225-S
	12	3	3500	15-1/2	2-1/2	8-94KHD-PY/CA-P-1230-S
THICK TREAD POLYURETHANE / CAST IRON CORE (PY/TT/CA) WHEELS WITH PRECISION BALL BEARINGS						
	6	3	2040	8-1/2	2-1/2	8-94KHD-PY/TT/CA-P-0630-S
	8	3	2520	10-1/2	2-1/2	8-94KHD-PY/TT/CA-P-0830-S
	10	4	3500	12-1/2	2-1/2	8-94KHD-PY/TT/CA-P-1040-S
	10	3	3000	12-1/2	2-1/2	8-94KHD-PY/TT/CA-P-1030-S
	12	4	4200	15-1/2	2-1/2	8-94KHD-PY/TT/CA-P-1240-S
POLYURETHANE / ALUMINUM CORE (PY/AL) WHEELS WITH PRECISION BALL BEARINGS						
	8	2-1/2	2010	10-1/2	2-1/2	8-94KHD-PY/AL-P-0825-S
	8	3	2520	10-1/2	2-1/2	8-94KHD-PY/AL-P-0830-S
	10	2-1/2	2370	12-1/2	2-1/2	8-94KHD-PY/AL-P-1025-S
	10	3	3000	12-1/2	2-1/2	8-94KHD-PY/AL-P-1030-S
X-TREME PLUS SOLID POLYURETHANE (XP) WHEELS WITH PRECISION BALL BEARINGS						
	8	2-1/2	2000	10-1/2	2-1/2	8-94KHD-XP-P-0825-S
	8	3	2000	10-1/2	2-1/2	8-94KHD-XP-P-0830-S
	10	3	2500	12-1/2	2-1/2	8-94KHD-XP-P-1030-S
HEAVY DUTY MOLDON RUBBER / CAST IRON CORE (MH/CA) WHEELS WITH ROLLER BEARINGS						
	8	2-1/2	1300	10-1/2	2-1/2	8-94KHD-MH/CA-R-0825-S
	10	3	1800	12-1/2	2-1/2	8-94KHD-MH/CA-R-1030-S
MOLDON RUBBER / CAST IRON CORE (MR/CA) WHEELS WITH PRECISION BALL BEARINGS						
	6	2-1/2	700	8-1/2	2-1/2	8-94KHD-MR/CA-P-0625-S
	6	3	750	8-1/2	2-1/2	8-94KHD-MR/CA-P-0630-S
	8	2-1/2	850	10-1/2	2-1/2	8-94KHD-MR/CA-P-0825-S
	8	3	900	10-1/2	2-1/2	8-94KHD-MR/CA-P-0830-S
	10	2-1/2	1000	12-1/2	2-1/2	8-94KHD-MR/CA-P-1025-S
	10	3	1400	12-1/2	2-1/2	8-94KHD-MR/CA-P-1030-S
	12	2-1/2	1500	15-1/2	2-1/2	8-94KHD-MR/CA-P-1225-S
	12	3	1600	15-1/2	2-1/2	8-94KHD-MR/CA-P-1230-S

*Add "B" for Ball Bearing, "P" for Precision Bearing, "PL" for Plain Bearing, "R" for Roller Bearing or "T" for Tapered Bearing.

All load ratings are for manual operation at 2 mph.

For **Rigid Casters**, change "S" to "R" at the end of the part number.

All **Rig Options** should be added to the end of the part number.

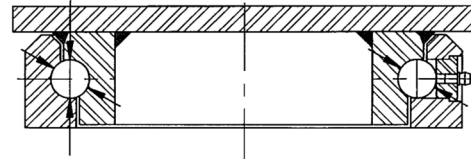
FEATURES

Load Capacity Up to 10,000 lbs.

- Raceway Design: Single ball raceway, 4-1/2" diameter with 3/4" diameter carbon steel balls. Precision machined and hardened to 53 Rockwell C minimum. Load and thrust are accommodated by our patented design. Sealed raceway is standard.
- Axle: 3/4" bolt and nut for 3" wide, 1" or 1-1/4" bolt and nut for 4" wide, 1-1/4" bolt and nut for 5" wide.
- Finish: Laguna Blue paint
- Wheels: 3" wide wheels are available with either a 1" roller bearing that rotates on 3/4" x 1" x 3-9/16" hardened and ground spanner bushings or 3/4" tapered bearings that rotate on a 3/4" axle. 4" and 5" wheels are available with either a 1-1/4" I.D. roller bearings which rotate on a hardened and ground spanner bushing or 1-1/4" tapered bearings which rotate on the axle. All wheels are equipped with lubrication fitting.
- Leg Thickness: 3/8" thick
- Mounting Plate: 1/2" thick



SWIVEL CROSS SECTION



RIG OPTIONS

- CWB** Cam Wheel Brake
DSL* Demountable Swivel Lock*
HDSL Heavy Duty Demountable Swivel Lock
HT High Temperature Lubrication
LT Low Temperature Lubrication
NY Notched Yoke
PCWB Poly Cam Wheel Brake
SL** Swivel Lock**
WS Wheel Seals
ZP Zinc Plating

*When ordering a DSL, you must also order the NY.

**Add 1/4" to overall height for swivel lock (SL) casters with 4" and 5" wide wheels.

MOUNTING PLATE (SWIVEL / RIGID)

Top Plate	Plate Size	Bolt Hole Spacing	Bolt Size
94	6 1/4" x 7 1/2"	4 1/8" x 6" slotted to 4 1/2" x 6 1/8"	1/2"
94K	6" x 7"	4-5/8" x 5-1/2" slotted to 4-3/8" x 5-5/8"	1/2"
95	6" x 7-1/2"	4-1/2" x 6" slotted to 4-1/8" x 6-1/8"	1/2"

Nylacron™ Wheels

With Precision Ball Bearings for Any Application:

(NY/MD, NY/HSB, NY/MC, NY/GF)

Nylacron™ wheels with proper sized precision bearings are made to fit in any rig hub length and axle size. Nylacron™ wheels have greater load capacity ratings with better rollability while requiring less maintenance and have longer life.



SPECIFICATIONS

Wheel Type (Wheel Code)	Diameter (in.)	Width (in.)	Capacity (lbs.)	OAH (in.)	Swivel Lead (in.)	Wt. (lbs.)	Swivel Part Number Add B, P, PL, R or T
NYLACRON™ MD (NY/MD) WHEELS WITH PRECISION BALL BEARINGS							
	6	3	10,000	8-1/2	1-9/16	24	8-90KR/DW-NY/MD-P-0630-S
	8	3	10,000	10-1/2	2	28	8-90KR/DW-NY/MD-P-0830-S
	8	4	10,000	10-1/2	2	30	8-90KR/DW-NY/MD-P-0840-S
	10	3	10,000	12-1/2	2-1/2	32	8-90KR/DW-NY/MD-P-1030-S
	10	4	10,000	12-1/2	2-1/2	34	8-90KR/DW-NY/MD-P-1040-S
	12	3	10,000	15-1/2	4-1/8	35	8-90KR/DW-NY/MD-P-1230-S
	12	4	10,000	15-1/2	3-3/8	40	8-90KR/DW-NY/MD-P-1240-S
	12	5	10,000	15-1/2	3-3/8	45	8-90KR/DW-NY/MD-P-1250-S
	12	6	10,000	15-1/2	3-3/8	50	8-90KR/DW-NY/MD-P-1260-S
	14	3	10,000	16-1/2	3-13/16	53	8-90KR/DW-NY/MD-P-1430-S
	14	4	10,000	16-1/2	3-13/16	56	8-90KR/DW-NY/MD-P-1440-S
	14	5	10,000	16-1/2	3-13/16	59	8-90KR/DW-NY/MD-P-1450-S
	14	6	10,000	16-1/2	3-13/16	70	8-90KR/DW-NY/MD-P-1460-S
	16	3	10,000	18-1/2	4	72	8-90KR/DW-NY/MD-P-1630-S
	16	4	10,000	18-1/2	4	76	8-90KR/DW-NY/MD-P-1640-S
	16	5	10,000	18-1/2	4	80	8-90KR/DW-NY/MD-P-1650-S
URETHANE / CAST IRON CORE (UR/CA) WHEELS WITH PRECISION BALL BEARINGS							
	6	3	4000	8-1/2	1-9/16	39	8-90KR/DW-UR/CA-P-0630-S
	8	3	5000	10-1/2	2	49	8-90KR/DW-UR/CA-P-0830-S
	8	4	7000	10-1/2	2	68	8-90KR/DW-UR/CA-P-0840-S
	10	3	6000	12-1/2	2-1/2	74	8-90KR/DW-UR/CA-P-1030-S
	10	4	8400	12-1/2	2-1/2	116	8-90KR/DW-UR/CA-P-1040-S
	12	3	6800	15-1/2	3-3/8	83	8-90KR/DW-UR/CA-P-1230-S
	12	4	9600	15-1/2	3-3/8	96	8-90KR/DW-UR/CA-P-1240-S
	12	5	10,000	15-1/2	3-3/8	155	8-90KR/DW-UR/CA-P-1250-S
	12	6	10,000	15-1/2	3-3/8	180	8-90KR/DW-UR/CA-P-1260-S
	14	6	10,000	16-1/2	3-13/16	178	8-90KR/DW-UR/CA-P-1460-S
	16	3	10,000	18-1/2	4	115	8-90KR/DW-UR/CA-P-1630-S
	16	4	10,000	18-1/2	4	165	8-90KR/DW-UR/CA-P-1640-S
	16	5	10,000	18-1/2	4	185	8-90KR/DW-UR/CA-P-1650-S
URETHANE / THICK TREAD / CAST IRON CORE (UR/TT/CA) WHEELS WITH PRECISION BALL BEARINGS							
	10	3	6800	12-1/2	2-1/2	64	8-90KR/DW-UR/TT/CA-P-1030-S
	10	4	9000	12-1/2	2-1/2	76	8-90KR/DW-UR/TT/CA-P-1040-S
	12	3	8200	15-1/2	4-1/8	101	8-90KR/DW-UR/TT/CA-P-1230-S
	12	4	10,000	15-1/2	3-3/8	106	8-90KR/DW-UR/TT/CA-P-1240-S
	12	5	10,000	15-1/2	3-3/8	155	8-90KR/DW-UR/TT/CA-P-1250-S
	14	3	8600	16-1/2	3-13/16	126	8-90KR/DW-UR/TT/CA-P-1430-S
	14	4	10,000	16-1/2	3-13/16	156	8-90KR/DW-UR/TT/CA-P-1440-S
	14	5	10,000	16-1/2	3-13/16	170	8-90KR/DW-UR/TT/CA-P-1450-S
	16	3	9200	18-1/2	4	94	8-90KR/DW-UR/TT/CA-P-1630-S
	16	4	10,000	18-1/2	4	165	8-90KR/DW-UR/TT/CA-P-1640-S
	16	5	10,000	18-1/2	4	205	8-90KR/DW-UR/TT/CA-P-1650-S

*Add "B" for Ball Bearing, "P" for Precision Bearing, "PL" for Plain Bearing, "R" for Roller Bearing or "T" for Tapered Bearing.

All load ratings are for manual operation at 2 mph.

For **Rigid Casters**, change "S" to "R" at the end of the part number.

All **Rig Options** should be added to the end of the part number.

FEATURES (8-94K/SA & 8-94KHD/SA)

Load Capacity Up to 3000 lbs.

- Load Springs: Different load springs for permits wide variation in ride “softness.”
- Complete Line: Available on all 6-81K SA and 6-81KHD SA series Kingpinless models. Consult Acorn™ for more information.
- Swivel Section: Kingpinless design. Ball bearing mounted in a machined raceway.
- Axle: 3/4" diameter standard. Optional 1" diameter available.

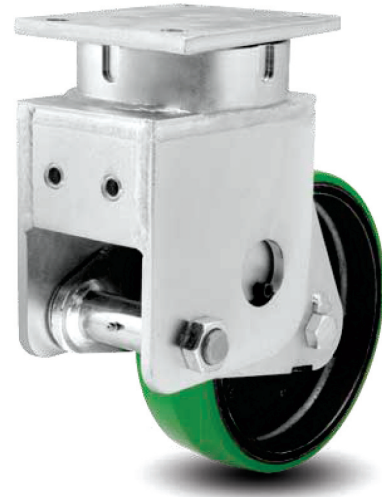
Consult Acorn™ for all Kingpinless Spring Loaded Applications.

KEY FEATURE

8-94K/SA and 8-94KHD/SA spring loaded casters offer greater capacity and protection from damaging shock or unwanted vibration and movement. Noise levels are reduced through the dampening effect of these casters.

TYPICAL APPLICATIONS

- Aviation Ground Support
- Aircraft tripod jacks
- Portable medical equipment
- Computer equipment
- Shock sensitive loads

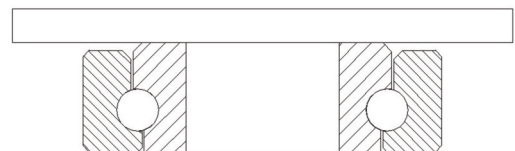


WHEEL TYPES

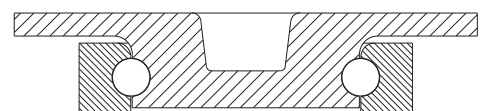
WHEEL TYPES	WHEEL CODE	BEARING
Nylacron™ MD	NY/MD	Precision Ball
Urethane 80A / Cast Iron Core	UR8/CA	Precision Ball
Urethane 95A / Cast Iron Core	UR9/CA	Precision Ball
Thick Tread Polyurethane	PY/TT	Precision Ball
Vulkollan™ / Cast Iron Core	VU/CA	Precision Ball
Vulkollan™ Thick Tread	VU/TT	Precision Ball

Additional wheels available, consult Acorn™.

8-94K/SA CROSS SECTION



8-94KHD/SA CROSS SECTION



8-94K/SA SPECIFICATIONS (YA = RIG ONLY)

Dia. (in.)	Width (in.)	Cap. at 50% Whl. Defl. (lbs.)	Total Whl. Deflection	OAH (no load)	Swl Lead (in.)	Swl Radius (in.)	Swivel Part Number
6	2-1/2	2000	1.30"	11.75"	4.50	7.62	8-94K/SA-YA*-06401S
6	3	2000	1.30"	11.75"	4.50	7.68	8-94K/SA-YA*-06501S
8	2-1/2	2000	1.30"	12.75"	4.50	8.62	8-94K/SA-YA*-08401S
8	3	2000	1.30"	12.75"	4.50	8.62	8-94K/SA-YA*-08501S
10	2-1/2	2000	1.30"	14.88"	4.50	9.56	8-94K/SA-YA*-10401S
10	3	2000	1.30"	14.88"	4.50	9.56	8-94K/SA-YA*-10501S
10	4	2000	1.30"	14.88"	4.50	9.75	8-94K/SA-YA*-10701S
10	5	3000	1.30"	14.88"	4.50	9.75	8-94K/SA-YA*-10801S
12	3	3000	1.30"	16.88"	5.31	11.44	8-94K/SA-YA*-12501S
12	3-1/2	3000	1.30"	16.88"	5.31	11.44	8-94K/SA-YA*-12601S
12	4	3000	1.30"	16.88"	5.31	11.50	8-94K/SA-YA*-12701S
12	5	3000	1.30"	16.88"	5.31	11.62	8-94K/SA-YA*-12801S
14	4	3000	1.30"	19.88"	6.13	13.50	8-94K/SA-YA*-14701S

For rigid casters, change "S" to "R" (i.e. 8-94K/SA-YA*-06401S becomes 8-94K/SA-YA*-06401R)

Consult Acorn™ for all Kingpinless Spring Loaded Applications.

8-94KHD/SA SPECIFICATIONS (YA = RIG ONLY)

Dia. (in.)	Width (in.)	Cap. at 50% Whl. Defl. (lbs.)	Total Whl. Deflection	OAH (no load)	Swl Lead (in.)	Swl Radius (in.)	Swivel Part Number
6	2-1/2	2000	1.30"	11.75"	4.50	7.62	8-94KHD/SA-YA*-06401S
6	3	2000	1.30"	11.75"	4.50	7.68	8-94KHD/SA-YA*-06501S
8	2-1/2	2000	1.30"	12.75"	4.50	8.62	8-94KHD/SA-YA*-08401S
8	3	2000	1.30"	12.75"	4.50	8.62	8-94KHD/SA-YA*-08501S
10	2-1/2	2000	1.30"	14.88"	4.50	9.56	8-94KHD/SA-YA*-10401S
10	3	2000	1.30"	14.88"	4.50	9.56	8-94KHD/SA-YA*-10501S
10	4	2000	1.30"	14.88"	4.50	9.75	8-94KHD/SA-YA*-10701S
10	5	3000	1.30"	14.88"	4.50	9.75	8-94KHD/SA-YA*-10801S
12	3	3000	1.30"	16.88"	5.31	11.44	8-94KHD/SA-YA*-12501S
12	3-1/2	3000	1.30"	16.88"	5.31	11.44	8-94KHD/SA-YA*-12601S
12	4	3000	1.30"	16.88"	5.31	11.50	8-94KHD/SA-YA*-12701S
12	5	3000	1.30"	16.88"	5.31	11.62	8-94KHD/SA-YA*-12801S

For rigid casters, change "S" to "R" (i.e. 8-94KHD/SA-YA*-06401S becomes 8-94KHD/SA-YA*-06401R)

Consult Acorn™ for all Kingpinless Spring Loaded Applications.

MOUNTING PLATE (8-94K)

Top Plate	Plate Size	Bolt Hole Spacing	Bolt Size
94	6 1/4" x 7 1/2"	4 1/8" x 6" slotted to 4 1/2" x 6 1/8"	1/2"

MOUNTING PLATE (8-94KHD)

Top Plate	Plate Size	Bolt Hole Spacing	Bolt Size
94	6 1/4" x 7 1/2"	4 1/2" x 6" slotted to 4 1/8" x 6 1/8"	1/2"
95	6" x 7 1/2"	4 1/2" x 6" slotted to 4 1/8" x 6 1/8"	1/2"