



Series	Caster Type	Page #
9-95BBL	Kingpin - Hot Forged .....	2-3
9-95TRL	Kingpin - Hot Forged .....	4-6
9-95K	Kingpinless.....	7-9
9-95KHD	Kingpinless HD .....	10-12
9-95K/DW	Kingpinless - Dual Wheel.....	13-14
9-95KHD/SA	Kingpinless HD - Shock Absorbing Rigs.....	15

**Nylacron Wheels with Precision Ball Bearings for any application (NY/MD, NY/HSB, NY/MC, NY/GF)**

Nylacron™ wheels with proper sized precision bearings are made to fit in any rig hub length and axle size. Nylacron™ wheels have greater load capacity ratings with better rollability while requiring less maintenance and have longer life.

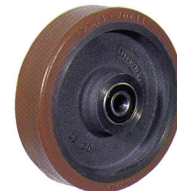


**VULKOLLAN® & Premium Urethanes**

with Precision Ball Bearings for Any Application



**Vulkollan® 93A**  
Cast Iron Core



**Urethane 93A**  
Cast Iron Core



**Urethane Soft 75-80A**  
Cast Iron Core

**FEATURES**

**Load Capacity Up to 8000 lbs.**

- Top Plate / Yoke Base: Drop forged steel. Precision machined for bearing
- Swivel Load Bearing: 7” diameter machined and heat treated raceway using 5/8” diameter steel balls which are protected by a labyrinth forged skirt.
- Component Thrust Bearing: 1 1/4” tapered roller bearing
- Legs: 1/2” steel plate deep formed for greater strength and welded to yoke with all welds both inside and outside
- King Bolt: Forged integrally with top plate. Machined and threaded 1-1/4”-12 USF.
- Axle: 1 1/4” solid axle and lock nut.
- Wheel Bearing: 1 1/4” tapered roller bearing or 1 1/2” straight roller bearing with hardened and ground spanner bushing inner race and 2 hardened steel thrust washers.
- Lubrication: Zerk fitting in yoke base and wheel hubs.
- Finish: All metal parts except wheels are zinc plated



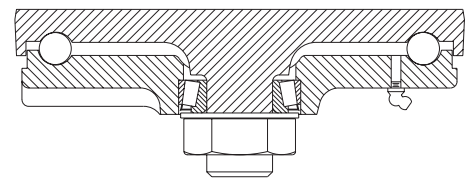
**RIG OPTIONS**

- NS** Sealed Swivel Section
- PCB** Poly Cam Brake
- FCB** Face Contact Brake
- SLW** Swivel Lock-Welded
- SLFI** Swivel Lock-Field Installable

**BRAKE OPTIONS**

- FBB** Face Brake
- FCB** Face Contact Brake
- SSB** Single Side Brake
- DSB** Double Side Brake

**SWIVEL CROSS SECTION**



**MOUNTING PLATE**

Top Plate	Plate Size	Bolt Hole Spacing	Bolt Size
95	8 1/2” x 8 1/2”	7 x 7”	5/8”
T	8 1/2” x 11”	7 x 9 3/4”	5/8”

**VULKOLLAN® & Premium Urethanes**

with Precision Ball Bearings for Any Application



**Vulkollan® 93A**  
Cast Iron Core



**Urethane 93A**  
Cast Iron Core



**Urethane Soft 75-80A**  
Cast Iron Core

**Nylacron™ Wheels**

With Precision Ball Bearings for Any Application:

(NY/MD, NY/HSB, NY/MC, NY/GF)

Nylacron™ wheels with proper sized precision bearings are made to fit in any rig hub length and axle size. Nylacron™ wheels have greater load capacity ratings with better rollability while requiring less maintenance and have longer life.



## SPECIFICATIONS

Wheel Type (Wheel Code)	Dia. (in.)	Width (in.)	Capacity (lbs.)	OAH (in.)	Swl. Lead (in.)	Wt. (lbs.)	Swivel Part Number Add B, P, PL, R or T*
<b>FORGED STEEL (FS) WHEELS WITH ROLLER BEARINGS</b>							
6	3		6000	9	2-1/4	60-1/4	9-95BBL-FS-R-0630-S
6	3		8000	9	2-1/4	59-1/2	9-95BBL-FS-R-0630-S
8	4		8000	11	2-1/4	61-1/2	9-95BBL-FS-R-0840-S
8	4		8000	11	2-1/4	72-1/2	9-95BBL-FS-R-0840-S
10	3		6000	13	2-1/2	78-1/2	9-95BBL-FS-R-1030-S
10	3		6500	13	2-1/2	78-1/2	9-95BBL-FS-R-1030-S
10	4		8000	13	2-1/2	86-1/4	9-95BBL-FS-R-1040-S
10	4		8000	13	2-1/2	86-1/2	9-95BBL-FS-R-1040-S
<b>DUCTILE IRON (DU) WHEELS WITH ROLLER BEARINGS</b>							
12	3-1/2		6000	15-1/2	2-1/2	83-1/2	9-95BBL-DU-R-0520-S
<b>NYLACRON™ (NY/MD) WHEELS WITH PRECISION BALL BEARINGS</b>							
6	3		8000	9	2-1/4	37-1/4	9-95BBL-NY/MD-P-0660-S
8	2-1/2		8000	11	2-1/4	41	9-95BBL-NY/MD-P-0825-S
8	3		8000	11	2-1/4	41	9-95BBL-NY/MD-P-0860-S
10	2-1/2		8000	13	2-1/2	45-1/2	9-95BBL-NY/MD-P-1025-S
10	3		8000	13	2-1/2	45-1/2	9-95BBL-NY/MD-P-1060-S
12	3-1/2		8000	15-1/2	2-1/2	73-1/2	9-95BBL-NY/MD-P-1235-S
12	4		8000	15-1/2	2-1/2	76-1/4	9-95BBL-NY/MD-P-1240-S
12	5		8000	15-1/2	2-1/2	90	9-95BBL-NY/MD-P-1250-S
16	4		8000	19	3	111-1/2	9-95BBL-NY/MD-P-1640-S
16	5		8000	19	3	126-1/4	9-95BBL-NY/MD-P-1650-S
<b>LAMINATED PHENOLIC / TEXITE (TL) WHEELS WITH ROLLER BEARINGS</b>							
6	5		8000	9	2-1/4		9-95BBL-TL-R-0650-S
8	6		5000	11	2-1/2	54	9-95BBL-TL-R-0860-S
10	3		3000	13	2-1/2	46	9-95BBL-TL-R-1030-S
10	6		5800	13	2-1/2	61-1/4	9-95BBL-TL-R-1060-S
12	3-1/2		4000	15-1/2	2-1/2	58-3/4	9-95BBL-TL-R-1235-S
16	4		8000	19	3	79-3/4	9-95BBL-TL-R-1640-S
<b>PHENOLIC / TEXITE (TM) WHEELS WITH ROLLER BEARINGS</b>							
8	6		5000	11	2-1/2	54-1/2	9-95BBL-TM-R-0860-S
10	3		2900	13	2-1/2	27	9-95BBL-TM-R-1030-S
10	6		5800	13	2-1/2	54	9-95BBL-TM-R-1060-S
12	4		8000	15	2-1/2	67-1/2	9-95BBL-TM-R-1240-S
<b>POLYURETHANE / CAST IRON CORE (PY/CA) WHEELS WITH ROLLER BEARINGS</b>							
8	4		3500	11	2-1/4	63	9-95BBL-PY/CA-R-0840-S
10	4		4200	13	2-1/2	71	9-95BBL-PY/CA-R-1040-S
10	5		5000	13	2-1/2	82	9-95BBL-PY/CA-R-1050-S
12	3-1/2		4100	15-1/2	2-1/2	73-1/2	9-95BBL-PY/CA-R-1235-S
12	4		4800	15-1/2	2-1/2	76-1/4	9-95BBL-PY/CA-R-1240-S
12	5		6000	15-1/2	2-1/2	90	9-95BBL-PY/CA-R-1250-S
16	4		5970	19	3	111-1/2	9-95BBL-PY/CA-R-1640-S
16	5		7700	19	3	126-1/4	9-95BBL-PY/CA-R-1650-S
<b>THICK TREAD POLYURETHANE / CAST IRON CORE (PY/TT/CA) WHEELS WITH PRECISION BALL BEARINGS</b>							
8	4		3500	11	2-1/4	63	9-95BBL-PY/TT/CA-P-0840-S
10	4		4200	13	2-1/2	71	9-95BBL-PY/TT/CA-P-1040-S
12	3-1/2		4100	15-1/2	2-1/2	73-1/2	9-95BBL-PY/TT/CA-P-1235-S
12	4		4800	15-1/2	2-1/2	76-1/4	9-95BBL-PY/TT/CA-P-1240-S
12	5		6000	15-1/2	2-1/2	90	9-95BBL-PY/TT/CA-P-1250-S
16	4		5970	19	3	111-1/2	9-95BBL-PY/TT/CA-P-1640-S
16	5		7700	19	3	126-1/4	9-95BBL-PY/TT/CA-P-1650-S
<b>MOLDON RUBBER / CAST IRON CORE (MR/CA) WHEELS WITH PRECISION BALL BEARINGS</b>							
10	4		1400	13	2-1/2	64-3/4	9-95BBL-MR/CA-P-1040-S
12	4		1600	15-1/2	2-1/2	55-3/4	9-95BBL-MR/CA-P-1240-S
16	5		2570	19	3	105-1/4	9-95BBL-MR/CA-P-1650-S

\*Add "B" for Ball Bearing, "P" for Precision Bearing, "PL" for Plain Bearing, "R" for Roller Bearing or "T" for Tapered Bearing.

For Rigid Casters, change "S" to "R" at the end of the part number.

All Rig Options should be added to the end of the part number.

All load ratings are for manual operation at 2 mph.

## FEATURES

### Load Capacity Up to 17,000 lbs.

- Top Plate / Yoke Base: Drop forged steel. Precision machined
- Swivel Load Bearing: Tapered roller thrust bearing having a rated capacity of 17,000 pounds. This bearing has 7" outside diameter and the bearing is shielded as well as protected by a labyrinth forged skirt.
- Component Thrust Bearing: 1 1/4" tapered roller bearing
- Legs: 1/2" steel plate deep formed for greater strength and welded to yoke with all welds both inside and outside
- King Bolt: forged integrally with top plate. Machined and threaded 1 1/4"-12 USF
- Axle: 1 1/4" solid axle and lock nut
- Wheel Bearing: 1 1/4" tapered roller bearing or 1 1/2" straight roller bearing with hardened and ground spanner bushing inner race and 2 hardened steel thrust washers
- Lubrication: Zerk fitting in yoke base and wheel hubs.
- Finish: all metal parts except wheels are zinc plated

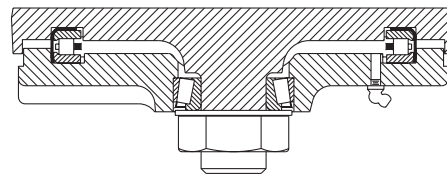


Forged Steel V-Groove Wheel

## RIG OPTIONS

- NS** Sealed Swivel Section  
**PCB** Poly Cam Brake  
**FCB** Face Contact Brake  
**SLW** Swivel Lock-Welded  
**SLFI** Swivel Lock-Field Installable

## SWIVEL CROSS SECTION



## BRAKE OPTIONS

- FBB** Face Brake  
**FCB** Face Contact Brake  
**SSB** Single Side Brake  
**DSB** Double Side Brake

## MOUNTING PLATE (SWIVEL / RIGID)

Top Plate	Plate Size	Bolt Hole Spacing	Bolt Size
95	8 1/2" x 8 1/2"	7 x 7"	5/8"
T	8 1/2" x 11"	7 x 9 3/4"	5/8"

## SPECIFICATIONS

Wheel Type (Wheel Code)	Dia. (in.)	Width (in.)	Capacity (lbs.)	OAH (in.)	Swl. Lead (in.)	Wt. (lbs.)	Swivel Part Number Add B, P, PL, R or T*
<b>FORGED STEEL (FS) WHEELS WITH ROLLER BEARINGS</b>							
	6	3	6000	9	2-1/4	60-1/4	9-95TRL-FS-R-0630-S
	8	4	6000	11	2-1/4	72-1/2	9-95TRL-FS-R-0840-S
	10	3	6000	13	2-1/2	78-1/2	9-95TRL-FS-R-1030-S
	10	4	6000	13	2-1/2	86-1/2	9-95TRL-FS-R-1040-S
<b>FORGED STEEL / V-GROOVED (FS/VG) WHEELS WITH ROLLER BEARINGS</b>							
	6	3	10,000	9	2-1/4	59-1/2	9-95TRL-FS/VG-R-0630-S
	8	4	10,000	11	2-1/4	61-1/2	9-95TRL-FS/VG-R-0840-S
	10	3	10,000	13	2-1/2	67-3/4	9-95TRL-FS/VG-R-1030-S
	10	4	10,000	12-1/2	2-1/2	89-1/2	9-95TRL-FS/VG-R-1040-S
<b>LARGE BORE FORGED STEEL (FH) WHEELS WITH ROLLER BEARINGS</b>							
	6	3	17,000	9	2-1/4	59-1/2	9-95TRL-FH-R-0630-S
	8	4	17,000	11	2-1/4	72-1/2	9-95TRL-FH-R-0840-S
	10	4	17,000	13	2-1/2	86-1/2	9-95TRL-FH-R-1040-S
<b>LARGE BORE FORGED STEEL / V-GROOVED (FH/VG) WHEELS WITH ROLLER BEARINGS</b>							
	8	4	15,000	11	2-1/4	61-1/2	9-95TRL-FH/VG-R-0840-S
	10	4	15,000	12-1/2	2-1/2	86-1/2	9-95TRL-FH/VG-R-1040-S
<b>DUCTILE IRON / CROWNED TREAD (DU/CT) WHEELS WITH ROLLER BEARINGS</b>							
	6	2-1/2	3500	9	2-1/4	58	9-95TRL-DU/CT-R-0625-S
	6	3	6000	9	2-1/4	60	9-95TRL-DU/CT-R-0630-S
	8	3	6000	11	2-1/4	64	9-95TRL-DU/CT-R-0830-S
	10	3	6000	13	2-1/2	74	9-95TRL-DU/CT-R-1030-S
<b>DUCTILE IRON (DU) WHEELS WITH ROLLER BEARINGS</b>							
	12	3-1/2	6000	15-1/2	2-1/2	83-1/2	9-95TRL-DU-R-0520-S
<b>NYLACRON™ MD (NY/MD) WHEELS WITH PRECISION BALL BEARINGS</b>							
	6	3	10,000	9	2-1/4	37-1/4	9-95TRL-NY/MD-P-0660-S
	6	5	17,000	9	2-1/4	39	9-95TRL-NY/MD-P-0650-S
	8	3	10,000	11	2-1/4	41	9-95TRL-NY/MD-P-0860-S
	8	4	15,000	11	2-1/4	61-1/2	9-95TRL-NY/MD-P-0840-S
	8	6	17,000	11	2-1/2	54-1/2	9-95TRL-NY/MD-P-0860-S
	10	3	10,000	13	2-1/2	45-1/2	9-95TRL-NY/MD-P-1060-S
	10	4	15,000	13	2-1/2	71	9-95TRL-NY/MD-P-1040-S
	10	5	17,000	13	2-1/2	82	9-95TRL-NY/MD-P-1050-S
	10	6	17,000	13	2-1/2	61-1/4	9-95TRL-NY/MD-P-1060-S
	12	3-1/2	10,000	15-1/2	2-1/2	73-1/2	9-95TRL-NY/MD-P-1235-S
	12	4	15,000	15-1/2	2-1/2	76-1/4	9-95TRL-NY/MD-P-1240-S
	12	5	17,000	15-1/2	2-1/2	90	9-95TRL-NY/MD-P-1250-S
	16	4	15,000	19	3	111-1/2	9-95TRL-NY/MD-P-1640-S
	16	5	17,000	19	3	126-1/4	9-95TRL-NY/MD-P-1650-S
<b>LAMINATED PHENOLIC / TEXITE (TL) WHEELS WITH ROLLER BEARINGS</b>							
	6	5	8000	9	2-1/4	49	9-95TRL-TL-R-0650-S
	8	6	5000	11	2-1/2	54	9-95TRL-TL-R-0860-S
	10	6	5800	13	2-1/2	61-1/4	9-95TRL-TL-R-1060-S
	12	3-1/2	4000	15-1/2	2-1/2	58-3/4	9-95TRL-TL-R-1235-S
	16	4	8000	19	3	79-3/4	9-95TRL-TL-R-1640-S
<b>PHENOLIC / TEXITE (TM) WHEELS WITH ROLLER BEARINGS</b>							
	8	6	5000	11	2-1/2	54-1/2	9-95TRL-TM-R-0860-S
	10	6	5800	13	2-1/2	54	9-95TRL-TM-R-1060-S
	12	4	8000	15-1/2	2-1/2	67-1/2	9-95TRL-TM-R-1240-S

(Continued on Next Page)

## SPECIFICATIONS

Wheel Type (Wheel Code)	Dia. (in.)	Width (in.)	Capacity (lbs.)	OAH (in.)	Swl. Lead (in.)	Wt. (lbs.)	Swivel Part Number Add B, P, PL, R or T*
<b>POLYURETHANE / CAST IRON CORE (PY/CA) WHEELS WITH PRECISION BALL BEARINGS</b>							
	8	4	3500	11	2-1/2	63	9-95TRL-PY/CA-P-0840-S
	10	4	4200	13	2-1/2	71	9-95TRL-PY/CA-P-1040-S
	10	5	5000	13	2-1/2	82	9-95TRL-PY/CA-P-1050-S
	12	3-1/2	4100	15-1/2	2-1/2	73-1/2	9-95TRL-PY/CA-P-1235-S
	12	4	4800	15-1/2	2-1/2	76-1/4	9-95TRL-PY/CA-P-1240-S
	12	5	6000	15-1/2	2-1/2	90	9-95TRL-PY/CA-P-1250-S
	16	4	5970	19	3	111-1/2	9-95TRL-PY/CA-P-1640-S
	16	5	7700	19	3	126-1/4	9-95TRL-PY/CA-P-1650-S
<b>THICK TREAD POLYURETHANE / CAST IRON CORE (PY/TT/CA) WHEELS WITH PRECISION BALL BEARINGS</b>							
	8	4	3500	11	2-1/4	63	9-95TRL-PY/TT/CA-P-0840-S
	10	4	4200	13	2-1/2	71	9-95TRL-PY/TT/CA-P-1040-S
	12	3-1/2	4100	15-1/2	2-1/2	73-1/2	9-95TRL-PY/TT/CA-P-1235-S
	12	4	4800	15-1/2	2-1/2	76-1/4	9-95TRL-PY/TT/CA-P-1240-S
	12	5	6000	15-1/2	2-1/2	90	9-95TRL-PY/TT/CA-P-1250-S
	16	4	5970	19	3	111-1/2	9-95TRL-PY/TT/CA-P-1640-S
	16	5	7700	19	3	126-1/4	9-95TRL-PY/TT/CA-P-1650-S
<b>MOLDON RUBBER / CAST IRON CORE (MR/CA) WHEELS WITH PRECISION BALL BEARINGS</b>							
	10	4	1400	13	2-1/2	64-3/4	9-95TRL-MR/CA-P-1040-S
	12	4	1600	15-1/2	2-1/2	55-3/4	9-95TRL-MR/CA-P-1240-S
	16	5	2570	19	3	105-1/4	9-95TRL-MR/CA-P-1650-S

\*Add "B" for Ball Bearing, "P" for Precision Bearing, "PL" for Plain Bearing, "R" for Roller Bearing or "T" for Tapered Bearing.

For **Rigid Casters**, change "S" to "R" at the end of the part number.

All **Rig Options** should be added to the end of the part number.

All load ratings are for manual operation at 2 mph.

## VULKOLLAN® & Premium Urethanes

with Precision Ball Bearings for Any Application



**Vulkollan® 93A**  
Cast Iron Core



**Urethane 93A**  
Cast Iron Core



**Urethane Soft 75-80A**  
Cast Iron Core

## Nylacron™ Wheels

With Precision Ball Bearings for Any Application:

(NY/MD, NY/HSB, NY/MC, NY/GF)

Nylacron™ wheels with proper sized precision bearings are made to fit in any rig hub length and axle size. Nylacron™ wheels have greater load capacity ratings with better rollability while requiring less maintenance and have longer life.



## FEATURES

### Load Capacity Up to 20,000 lbs.

- Raceway Design: 4-1/2" diameter with 3/4" diameter carbon steel balls. Precision machined and hardened to 53 Rockwell C minimum scale. Load and thrust are accommodated by our patented Kingpinless design. Sealed raceway is standard.
- Leg Thickness: 3/8" formed steel
- Axle: 3/4" bolt and nut for 3" wide, 1" or 1-1/4" bolt and nut for 4" wide, 1-1/4" bolt and nut for 5" wide.
- Lubrication: Grease fitting in swivel and hub of wheel
- Finish: Laguna Blue
- Wheels: 3" wide wheels are available with either a 1" roller bearing or 3/4" tapered bearings. 4" and 5" wheels are available with 1-1/4" I.D. roller bearing or 1-1/4" tapered bearings. All wheels are equipped with a lubrication fitting.
- Mounting Plate: 6-1/4" x 7-1/2" x 1/2" swivel top plate, 6" x 7-1/2" x 1/2" rigid top plate
- Bolt Hole Spacing: 4-1/2" x 6", slotted to 4-1/8" x 6-1/8"
- Swivel Yoke Base: SAE 1045 hot steel forging
- Mounting Bolt Diameter: 1/2"
- Swivel Top Plate: SAE 1045 hot steel forging



## RIG OPTIONS

- NY** Notched Yoke
- NS** Sealed Swivel Section
- SL/W** Swivel Lock-Welded
- SL/FI** Swivel Lock-Field Installable
- SL/D** Swivel Lock-Field Demountable
- HT** High Temp Lubrication
- LT** Low Temp Lubrication
- WS** Wheel Seals
- ZP** Zinc Plated

## BRAKE OPTIONS

- PCB** Poly Cam Brake
- FCB** Face Contact Brake
- WCB** Wheel Cam Brake

## SWIVEL CROSS SECTION



## MOUNTING PLATE

Top Plate	Plate Size	Bolt Hole Spacing	Bolt Size
94	6-1/4" x 7-1/2"	4-1/2" x 6-1/8" slotted to 4-1/8" x 6"	5/8"
95	8 1/2" x 8 1/2"	7 x 7"	5/8"
T	8 1/2" x 11"	7 x 9 3/4"	5/8"

## SPECIFICATIONS

Wheel Type (Wheel Code)	Dia. (in.)	Width (in.)	Capacity (lbs.)	OAH (in.)	Swl. Lead (in.)	Wt. (lbs.)	Swivel Part Number Add B, P, PL, R or T*
<b>FORGED STEEL (FS) WHEELS WITH ROLER BEARINGS</b>							
	6	2-1/2	5000	8-1/2	1-3/4	52	9-95K-FS-R-0625-S
	6	3	7000	8-1/2	1-3/4	55	9-95K-FS-R-0630-S
	8	2-1/2	4500	10-1/2	2-3/16	56	9-95K-FS-R-0825-S
	8	3	5500	10-1/2	2-3/16	60	9-95K-FS-R-0830-S
	8	4	20,000	12-1/2	2-3/16	88	9-95K-FS-R-0840-S
	10	3	6000	12-1/2	2-11/16	74	9-95K-FS-R-1030-S
	10	4	20,000	12-1/2	2-7/16	116	9-95K-FS-R-1040-S
<b>FORGED STEEL / HEAVY DUTY (FS/HD) WHEELS WITH ROLER BEARINGS</b>							
	6	3	10,000	8-1/2	1-3/4	55	9-95K-FS/HD-R-0630-S
<b>FORGED STEEL / V-GROOVE (FS/VG) WHEELS WITH TAPERED BEARINGS</b>							
	6	3	7000	8-1/2	1-3/4	55	9-95K-FS/VG-R-0630-S
	8	3	6000	10-1/2	2-3/16	60	9-95K-FS/VG-R-0830-S
	8	4	10,000	12-1/2	2-3/16	88	9-95K-FS/VG-R-0840-S
	10	3	6000	12-1/2	2-11/16	76	9-95K-FS/VG-R-1030-S
	10	4	10,000	12-1/2	2-7/16	110	9-95K-FS/VG-R-1040-S
<b>CAST IRON / V-GROOVE (CA/VG) WHEELS WITH ROLER BEARINGS</b>							
	8	2-1/2	3000	10-1/2	2-3/16	56	9-95K-CA/VG-R-0825-S
	8	3	5000	10-1/2	2-3/16	60	9-95K-CA/VG-R-0830-S
	10	3	5000	12-1/2	2-11/16	74	9-95K-CA/VG-R-1030-S
	12	3	3000	15-1/2	3-5/8	86	9-95K-CA/VG-R-1230-S
<b>CAST IRON (CA) WHEELS WITH ROLER BEARINGS</b>							
	6	3	3000	8-1/2	1-3/4	39	9-95K-CA-R-0630-S
	8	3	3000	10-1/2	2-3/16	49	9-95K-CA-R-0830-S
	8	4	4000	12-1/2	2-3/16	68	9-95K-CA-R-0840-S
	10	3	4000	12-1/2	2-11/16	74	9-95K-CA-R-1030-S
	12	3	5000	15-1/2	3-5/8	83	9-95K-CA-R-1230-S
<b>ELASTIC RUBBER / CAST IRON CORE (ER/CA) WHEELS WITH PRECISION BALL BEARINGS</b>							
	6	3	1020	8-1/2	1-3/4	33	9-95K-ER/CA-P-0630-S
	8	2-1/2	1005	10-1/2	2-3/16	45	9-95K-ER/CA-P-0825-S
	8	3	1260	10-1/2	2-3/16	50	9-95K-ER/CA-P-0830-S
	10	3	1500	12-1/2	2-11/16	54	9-95K-ER/CA-P-1030-S
	10	4	1400	12-1/2	2-7/16	72	9-95K-ER/CA-P-1040-S
	12	3	1710	15-1/2	3-5/8	88	9-95K-ER/CA-P-1230-S
	12	4	1600	15-1/2	3-5/8	96	9-95K-ER/CA-P-1240-S
	12	5	2050	15-1/2	3-5/8	150	9-95K-ER/CA-P-1250-S
	16	3	1420	19	4-3/8	95	9-95K-ER/CA-P-1630-S
<b>ELASTIC RUBBER / ALUMINUM CORE (ER/AL) WHEELS WITH PRECISION BALL BEARINGS</b>							
	10	3	1500	12-1/2	2-11/16	48	9-95K-ER/AL-P-1030-S
	12	3	1710	15-1/2	3-5/8	68	9-95K-ER/AL-P-1230-S

(Continued on Next Page)



## SPECIFICATIONS

Wheel Type (Wheel Code)	Dia. (in.)	Width (in.)	Capacity (lbs.)	OAH (in.)	Swl. Lead (in.)	Wt. (lbs.)	Swivel Part Number Add B, P, PL, R or T*
<b>URETHANE / CAST IRON CORE (UR/CA) WHEELS WITH PRECISION BALL BEARINGS</b>							
	6	3	2000	8-1/2	1-3/4	33	9-95K-UR/CA-P-0630-S
	8	3	2500	10-1/2	2-3/16	52	9-95K-UR/CA-P-0830-S
	8	4	3500	12-1/2	2-3/16	64	9-95K-UR/CA-P-0840-S
	10	3	3000	12-1/2	2-11/16	61	9-95K-UR/CA-P-1030-S
	10	4	4200	12-1/2	2-7/16	76	9-95K-UR/CA-P-1040-S
	10	5	5000	12-1/2	2-5/8	80	9-95K-UR/CA-P-1040-S
	12	3	3400	15-1/2	3-5/8	92	9-95K-UR/CA-P-1230-S
	12	4	4800	15-1/2	3-5/8	96	9-95K-UR/CA-P-1240-S
	12	5	6000	15-1/2	3-5/8	155	9-95K-UR/CA-P-1250-S
	16	3	4600	19	4-3/8	94	9-95K-ER/AL-P-1630-S
	16	4	6000	19	4-3/8	165	9-95K-ER/AL-P-1630-S
	16	5	8400	19	4-3/16	185	9-95K-ER/AL-P-1630-S
<b>URETHANE / ULTRA THICK / CAST IRON CORE (UR/TT/CA) WHEELS WITH PRECISION BALL BEARINGS</b>							
	10	3	3400	12-1/2	2-11/16	76	9-95K-UR/TT/CA-P-1030-S
	10	4	4500	12-1/2	2-7/16	80	9-95K-UR/TT/CA-P-1040-S
	12	3	4100	15-1/2	3-5/8	92	9-95K-UR/TT/CA-P-1230-S
	12	4	5300	15-1/2	3-5/8	96	9-95K-UR/TT/CA-P-1240-S
	12	5	6500	15-1/2	3-5/8	155	9-95K-UR/TT/CA-P-1250-S
	14	3	4800	18	4-3/8	126	9-95K-UR/TT/CA-P-1630-S
	14	4	6200	18	4-3/8	156	9-95K-UR/TT/CA-P-1630-S
	14	5	7600	18	4-3/16	170	9-95K-UR/TT/CA-P-1630-S
	16	3	5400	19	4-3/8	94	9-95K-UR/TT/CA-P-1630-S
	16	4	7100	19	4-3/8	165	9-95K-UR/TT/CA-P-1630-S
	16	5	8800	19	4-3/16	185	9-95K-UR/TT/CA-P-1630-S

\*Add "B" for Ball Bearing, "P" for Precision Bearing, "PL" for Plain Bearing, "R" for Roller Bearing or "T" for Tapered Bearing.

For **Rigid Casters**, change "S" to "R" at the end of the part number.

All **Rig Options** should be added to the end of the part number.

All load ratings are for manual operation at 2 mph.

## VULKOLLAN® & Premium Urethanes

with Precision Ball Bearings for Any Application



**Vulkollan® 93A**  
Cast Iron Core



**Urethane 93A**  
Cast Iron Core



**Urethane Soft 75-80A**  
Cast Iron Core

## Nylacron™ Wheels

With Precision Ball Bearings for Any Application:

(NY/MD, NY/HSB, NY/MC, NY/GF)

Nylacron™ wheels with proper sized precision bearings are made to fit in any rig hub length and axle size. Nylacron™ wheels have greater load capacity ratings with better rollability while requiring less maintenance and have longer life.



## FEATURES

### Load Capacity Up to 20,000 lbs.

- Top Plate: 1/2" AISI 1045 steel one piece forged, precision welded and through hardened for long life.
- Yoke Base: Notched AISI 1045 steel machined and through hardened to minimize ball indentation and wear.
- Swivel Section: 7" Diameter with 3/4" hard chrome balls in precision machined through hardened raceway with threaded ball plug.
- Legs: 1/2" x 4" steel welded to yoke base using 100,000 psi weld filler, welded inside and outside for superior strength.
- Wheel Axle: 1-1/4" dia. zerk axle with lock nut
- Lubrication: Zerk fitting in swivel section and in recessed head of hollow axle.
- Finish: Zinc plated for greater corrosion resistance.



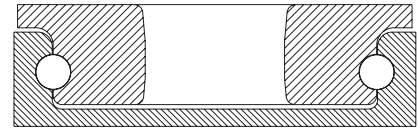
## RIG OPTIONS

- NS** Sealed Swivel Section  
**SLW** Swivel Lock-Welded  
**SLFI** Swivel Lock-Field Installable

## BRAKE OPTIONS

- PCB** Poly Cam Brake  
**FCB** Face Contact Brake

## SWIVEL CROSS SECTION



## MOUNTING PLATE (SWIVEL / RIGID)

Top Plate	Plate Size	Bolt Hole Spacing	Bolt Size
95	8 1/2" x 8 1/2"	7 x 7"	5/8"

## SPECIFICATIONS

Wheel Type (Wheel Code)	Dia. (in.)	Width (in.)	Capacity (lbs.)	OAH (in.)	Swl. Lead (in.)	Wt. (lbs.)	Swivel Part Number Add B, P, PL, R or T*
<b>FORGED STEEL (FS) WHEELS WITH ROLLER OR TAPERED BEARINGS</b>							
	6	3	10000	8-1/2	2-1/4	59-1/2	9-95KHD-FS-T-0630-S
	8	4	10000	11	2-1/4	72-1/2	9-95KHD-FS-T-0840-S
	10	3	6500	13	2-1/2	78-1/2	9-95KHD-FS-T-1030-S
	10	4	10000	13	2-1/2	86-1/2	9-95KHD-FS-T-1040-S
<b>FORGED STEEL / V-GROOVED (FS/VG) WHEELS WITH ROLLER BEARINGS</b>							
	6	3	6000	8-1/2	2-1/4	59-1/2	9-95KHD-FS/VG-R-0630-S
	8	4	8350	11	2-1/4	61-1/2	9-95KHD-FS/VG-R-0840-S
	10	3	6000	13	2-1/2	67-3/4	9-95KHD-FS/VG-R-1030-S
	10	4	8350	13	2-1/2	89-1/2	9-95KHD-FS/VG-R-1040-S
<b>LARGE BORE FORGED STEEL (FH) WHEELS WITH ROLLER BEARINGS</b>							
	6	3	17000	8-1/2	2-1/4	59-1/2	9-95KHD-FH-R-0630-S
	8	4	17000	11	2-1/4	72-1/2	9-95KHD-FH-R-0840-S
	10	4	17000	13	2-1/2	86-1/2	9-95KHD-FH-R-1040-S
<b>LARGE BORE FORGED STEEL / V-GROOVED (FH/VG) WHEELS WITH ROLLER BEARINGS</b>							
	8	4	15000	11	2-1/4	61-1/2	9-95KHD-FH/VG-R-0840-S
	10	4	15000	13	2-1/2	86-1/2	9-95KHD-FH/VG-R-1040-S
<b>DUCTILE IRON / CROWNED TREAD (DU/CT) WHEELS WITH ROLLER BEARINGS</b>							
	6	2-1/2	3500	8-1/2	2-1/4	58	9-95KHD-DU/CT-R-0625-S
	6	3	6000	8-1/2	2-1/4	60	9-95KHD-DU/CT-R-0630-S
	8	3	6000	11	2-1/4	64	9-95KHD-DU/CT-R-0830-S
	10	3	6000	13	2-1/2	74	9-95KHD-DU/CT-R-1030-S
<b>DUCTILE IRON (DU) WHEELS WITH ROLLER BEARINGS</b>							
	12	3-1/2	6000	15-1/2	2-1/2	83-1/2	9-95KHD-DU-R-0520-S
<b>NYLACRON™ MD (NY/MD) WHEELS WITH PRECISION BALL BEARINGS</b>							
	6	2-1/2	10,000	8-1/2	2-1/4	36	9-95KHD-NY/MD-P-0625-S
	6	3	10,000	8-1/2	2-1/4	37-1/4	9-95KHD-NY/MD-P-0660-S
	8	3	10,000	11	2-1/4	41	9-95KHD-NY/MD-P-0860-S
	8	4	15,000	11	2-1/2	63	9-95KHD-NY/MD-P-0840-S
	8	6	7200	11	2-1/2	54	9-95KHD-NY/MD-P-0860-S
	10	3	10,000	13	2-1/2	45-1/2	9-95KHD-NY/MD-P-1060-S
	10	4	15,000	13	2-1/2	71	9-95KHD-NY/MD-P-1040-S
	10	5	20,000	13	2-1/2	82	9-95KHD-NY/MD-P-1050-S
	10	6	20,000	13	2-1/2	61-1/4	9-95KHD-NY/MD-P-1060-S
	12	3-1/2	10,000	15-1/2	2-1/2	73-1/2	9-95KHD-NY/MD-P-1235-S
	12	4	15,000	15-1/2	2-1/2	76-1/4	9-95KHD-NY/MD-P-1240-S
	12	5	20,000	15-1/2	2-1/2	90	9-95KHD-NY/MD-P-1250-S
	16	4	15,000	19	3	111-1/2	9-95KHD-NY/MD-P-1640-S
	16	5	20,000	19	3	126-1/4	9-95KHD-NY/MD-P-1650-S
<b>LAMINATED PHENOLIC / TEXITE (TL) WHEELS WITH ROLLER BEARINGS</b>							
	6	5	8000	8-1/2	2-1/4	49	9-95KHD-TL-R-0650-S
	8	6	5000	11	2-1/2	54	9-95KHD-TL-R-0860-S
	10	6	5800	13	2-1/2	61-1/4	9-95KHD-TL-R-1060-S
	12	3-1/2	4000	15-1/2	2-1/2	58-3/4	9-95KHD-TL-R-1235-S
	16	4	8000	19	3	79-3/4	9-95KHD-TL-R-1640-S
<b>PHENOLIC / TEXITE (TM) WHEELS WITH ROLLER BEARINGS</b>							
	8	6	5000	11	2-1/2	54-1/2	9-95KHD-TM-R-0860-S
	10	6	5800	13	2-1/2	54	9-95KHD-TM-R-1060-S
	12	4	8000	15-1/2	2-1/2	67-1/2	9-95KHD-TM-R-1240-S
<b>POLYURETHANE / CAST IRON CORE (PY/CA) WHEELS WITH PRECISION BALL BEARINGS</b>							
	8	4	3500	11	2-1/2	63	9-95KHD-PY/CA-P-0840-S
	10	4	4200	13	2-1/2	71	9-95KHD-PY/CA-P-1040-S
	10	5	5000	13	2-1/2	82	9-95KHD-PY/CA-P-1050-S
	12	3-1/2	4100	15-1/2	2-1/2	73-1/2	9-95KHD-PY/CA-P-1235-S
	12	4	4800	15-1/2	2-1/2	76-1/4	9-95KHD-PY/CA-P-1240-S
	12	5	6000	15-1/2	2-1/2	90	9-95KHD-PY/CA-P-1250-S
	16	4	5970	19	3	111-1/2	9-95KHD-PY/CA-P-1640-S
	16	5	7700	19	3	126-1/4	9-95KHD-PY/CA-P-1650-S

(Continued on Next Page)

## SPECIFICATIONS

Wheel Type (Wheel Code)	Dia. (in.)	Width (in.)	Capacity (lbs.)	OAH (in.)	Swl. Lead (in.)	Wt. (lbs.)	Swivel Part Number Add B, P, PL, R or T*
<b>THICK TREAD POLYURETHANE / CAST IRON CORE (PY/TT/CA) WHEELS WITH PRECISION BALL BEARINGS</b>							
	8	4	3500	11	2-1/4	63	9-95KHD-PY/TT/CA-P-0840-S
	10	4	4200	13	2-1/2	71	9-95KHD-PY/TT/CA-P-1040-S
	12	3-1/2	4100	15-1/2	2-1/2	73-1/2	9-95KHD-PY/TT/CA-P-1235-S
	12	4	4800	15-1/2	2-1/2	76-1/4	9-95KHD-PY/TT/CA-P-1240-S
	12	5	6000	15-1/2	2-1/2	90	9-95KHD-PY/TT/CA-P-1250-S
	16	4	5970	19	3	111-1/2	9-95KHD-PY/TT/CA-P-1640-S
	16	5	7700	19	3	126-1/4	9-95KHD-PY/TT/CA-P-1650-S
<b>MOLDON RUBBER / CAST IRON CORE (MR/CA) WHEELS WITH PRECISION BALL BEARINGS</b>							
	10	4	1400	13	2-1/2	64-3/4	9-95KHD-MR/CA-P-1040-S
	12	4	1600	15-1/2	2-1/2	55-3/4	9-95KHD-MR/CA-P-1240-S
	16	5	2570	19	3	105-1/4	9-95KHD-MR/CA-P-1650-S

\*Add "B" for Ball Bearing, "P" for Precision Bearing, "PL" for Plain Bearing, "R" for Roller Bearing or "T" for Tapered Bearing.

For **Rigid Casters**, change "S" to "R" at the end of the part number.

All **Rig Options** should be added to the end of the part number.

All load ratings are for manual operation at 2 mph.

## VULKOLLAN® & Premium Urethanes

with Precision Ball Bearings for Any Application



**Vulkollan® 93A**  
Cast Iron Core



**Urethane 93A**  
Cast Iron Core



**Urethane Soft  
75-80A**  
Cast Iron Core

## Nylacron™ Wheels

With Precision Ball Bearings for Any Application:

(NY/MD, NY/HSB, NY/MC, NY/GF)

Nylacron™ wheels with proper sized precision bearings are made to fit in any rig hub length and axle size. Nylacron™ wheels have greater load capacity ratings with better rollability while requiring less maintenance and have longer life.



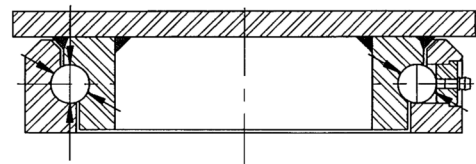
## FEATURES

### Load Capacity Up to 20,000 lbs.

- Single Ball Raceway: 4-1/2" diameter with 3/4" diameter carbon steel balls. Precision machined and hardened to 53 Rockwell C minimum. Load and thrust are accommodated by our patented design. Sealed raceway is standard.
- Axle: 3/4" bolt and nut for 3" wide, 1" or 1-1/4" bolt and nut for 4" wide, 1-1/4" bolt and nut for 5" wide.
- Finish: Laguna Blue
- Wheels: 3" wide wheels are available with either a 1" roller bearing that rotates on 3/4" x 1" x 3-9/16" hardened and ground spanner bushings or 3/4" tapered bearings that rotate on a 3/4" axle. 4" and 5" wheels are available with either a 1-1/4" I.D. roller bearings which rotate on a hardened and ground spanner bushing or 1-1/4" tapered bearings which rotate on the axle. All wheels are equipped with lubrication fitting.
- Mounting Plate Size: 6-1/4" x 7-1/2" x 1/2" swivel top plate, 6" x 7-1/2" x 1/2" rigid top plate
- Bolt Hole Spacing: 4-1/2" x 6", slotted to 4-1/8" x 6-1/8"
- Mounting Bolt Diameter: 1/2"
- Leg Thickness: 3/8" thick
- Mounting Plate Thickness: 1/2"



### SWIVEL CROSS SECTION



## RIG OPTIONS

- SLHO** Swivel Lock - Hand Operated Detachable
- SLHO** Swivel Lock - Hand Operated
- NY850** Notched yoke base for swivel locks
- Spring-Loaded Models Available**, consult Acorn™.

## BRAKE OPTIONS

- FCB** Face Contact Brake

## MOUNTING PLATE

Top Plate	Plate Size	Bolt Hole Spacing	Bolt Size
94 (standard)	6-1/4" x 7-1/2"	4-1/2" x 6-1/8" slotted to 4-1/8" x 6"	5/8"

## Nylacron™ Wheels

With Precision Ball Bearings for Any Application:  
(NY/MD, NY/HSB, NY/MC, NY/GF)

Nylacron™ wheels with proper sized precision bearings are made to fit in any rig hub length and axle size. Nylacron™ wheels have greater load capacity ratings with better rollability while requiring less maintenance and have longer life.



## SPECIFICATIONS

Wheel Type (Wheel Code)	Diameter (in.)	Width (in.)	Capacity (lbs.)	OAH (in.)	Swivel Lead (in.)	Approx. Wt. (lbs.)	Swivel Part Number Add B, P, PL, R or T*
<b>FORGED STEEL (FS) WHEELS WITH PRECISION BALL BEARINGS</b>							
	6	3	14,300	8-3/4	1-9/16	55	9-95K/DW-FS-P-0630-S
	8	3	11,000	10-3/4	2-1/16	56	9-95K/DW-FS-P-0830-S
	8	4	20,000	10-3/4	2-1/16	88	9-95K/DW-FS-P-0840-S
	10	3	12,000	12-3/4	2-9/16	76	9-95K/DW-FS-P-1030-S
	10	4	10,000	12-3/4	2-9/16	110	9-95K/DW-FS-P-1040-S
<b>CAST IRON (CA) WHEELS WITH PRECISION BALL BEARINGS</b>							
	6	3	6000	8-3/4	1-9/16	39	9-95K/DW-CA-P-0630-S
	8	3	6000	10-3/4	2-1/16	49	9-95K/DW-CA-P-0830-S
	8	4	8000	10-3/4	2-1/16	68	9-95K/DW-CA-P-0840-S
	10	3	8000	12-1/2	2-9/16	74	9-95K/DW-CA-P-1030-S
	10	4	10,000	12-3/4	2-9/16	116	9-95K/DW-CA-P-1040-S
	12	3	10,000	15-1/2	3-7/16	83	9-95K/DW-CA-P-1230-S
<b>NYLACRON™ MD (NY/MD) WHEELS WITH PRECISION BALL BEARINGS</b>							
	6	3	10,000	8-3/4	1-9/16	24	9-95K/DW-NY/MD-P-0630-S
	8	3	10,000	10-3/4	2-1/16	28	9-95K/DW-NY/MD-P-0830-S
	8	4	15,000	10-3/4	2-1/16	32	9-95K/DW-NY/MD-P-0840-S
	10	3	10,000	12-1/2	2-9/16	33	9-95K/DW-NY/MD-P-1030-S
	10	4	15,000	12-3/4	2-9/16	38	9-95K/DW-NY/MD-P-1040-S
	12	3	10,000	15-1/2	3-7/16	34	9-95K/DW-NY/MD-P-1230-S
	12	4	15,000	15-1/2	3-7/16	40	9-95K/DW-NY/MD-P-1240-S
	12	5	20,000	15-1/2	3-7/16	66	9-95K/DW-NY/MD-P-1250-S
	12	6	20,000	15-1/2	3-7/16	76	9-95K/DW-NY/MD-P-1260-S
	14	3	10,000	18	3-7/8	40	9-95K/DW-NY/MD-P-1430-S
	14	4	15,000	18	3-7/8	46	9-95K/DW-NY/MD-P-1440-S
	14	5	20,000	18	3-7/8	72	9-95K/DW-NY/MD-P-1450-S
	14	6	20,000	18	3-7/8	86	9-95K/DW-NY/MD-P-1460-S
	16	3	10,000	19	4-1/8	56	9-95K/DW-NY/MD-P-1630-S
	16	4	15,000	19	4-1/8	86	9-95K/DW-NY/MD-P-1640-S
	16	5	20,000	19	4-1/8	92	9-95K/DW-NY/MD-P-1650-S
<b>URETHANE / CAST IRON CORE (UR/CA) WHEELS WITH PRECISION BALL BEARINGS</b>							
	6	3	4000	8-3/4	1-9/16	39	9-95K/DW-UR/CA-P-0630-S
	8	3	5000	10-3/4	2-1/16	49	9-95K/DW-UR/CA-P-0830-S
	8	4	7000	10-3/4	2-1/16	68	9-95K/DW-UR/CA-P-0840-S
	10	3	6000	12-1/2	2-9/16	74	9-95K/DW-UR/CA-P-1030-S
<b>URETHANE / THICK TREAD / CAST IRON CORE (UR/TT/CA) WHEELS WITH PRECISION BALL BEARINGS</b>							
	10	3	6800	12-1/2	2-9/16	76	9-95K/DW-UR/TT/CA-P-1030-S
	10	4	9000	12-3/4	2-9/16	102	9-95K/DW-UR/TT/CA-P-1040-S
	12	3	6800	15-1/2	3-7/16	98	9-95K/DW-UR/TT/CA-P-1230-S
	12	4	10,600	15-1/2	3-7/16	106	9-95K/DW-UR/TT/CA-P-1240-S
	12	5	13,000	15-1/2	3-7/16	180	9-95K/DW-UR/TT/CA-P-1250-S
	14	3	9600	18	3-7/8	126	9-95K/DW-UR/TT/CA-P-1430-S
	14	4	12,400	18	3-7/8	156	9-95K/DW-UR/TT/CA-P-1440-S
	16	3	10,800	19	4-1/8	115	9-95K/DW-UR/TT/CA-P-1630-S
	16	4	14,200	19	4-1/8	165	9-95K/DW-UR/TT/CA-P-1640-S
	16	5	17,600	19	4-1/8	205	9-95K/DW-UR/TT/CA-P-1650-S

\*Add "B" for Ball Bearing, "P" for Precision Bearing, "PL" for Plain Bearing, "R" for Roller Bearing or "T" for Tapered Bearing.

For **Rigid Casters**, change "S" to "R" at the end of the part number.

All **Rig Options** should be added to the end of the part number.

All load ratings are for manual operation at 2 mph.

## FEATURES

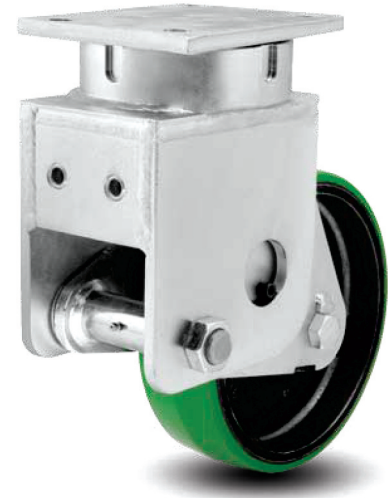
### Load Capacity Up to 3000 lbs.

- Load Springs: Different load springs for permits wide variation in ride “softness.”
- Complete Line: Available on all 6-81K SA and 6-81KHD SA series Kingpinless models. Consult Acorn™ for more information.
- Swivel Section: Kingpinless design. Ball bearing mounted in a machined raceway.
- Axle: 3/4" diameter standard. Optional 1" diameter available.

**Consult Acorn™ for all Kingpinless Spring Loaded Applications.**

## KEY FEATURE

9-95KHD/SA spring loaded casters offer greater capacity and protection from damaging shock or unwanted vibration and movement. Noise levels are reduced through the dampening effect of these casters.



## TYPICAL APPLICATIONS

- Aviation Ground Support
- Aircraft tripod jacks
- Portable medical equipment
- Computer equipment
- Shock sensitive loads



## WHEEL TYPES

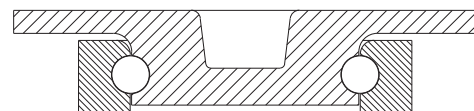
WHEEL CODE	BEARING
Nylacron™ MD	Precision Ball
Urethane 80A / Cast Iron Core	Precision Ball
Urethane 95A / Cast Iron Core	Precision Ball
Thick Tread Polyurethane	Precision Ball
Vulkollan™ / Cast Iron Core	Precision Ball
Vulkollan™ Thick Tread	Precision Ball

Additional wheels available, consult Acorn™.

## MOUNTING PLATE (9-95KHD/SA)

Top Plate	Plate Size	Bolt Hole Spacing	Bolt Size
95	8 1/2" x 8 1/2"	7 x 7"	5/8"

## 9-95KHD/SA CROSS SECTION



## 9-95KHD/SA RIG SPECIFICATIONS (YA = RIG ONLY)

Dia. (in.)	Width (in.)	Cap. at 50% Whl. Defl. (lbs.)	Total Whl. Deflection	OAH (no load)	Swl Lead (in.)	Swl Radius (in.)	Swivel Part Number
8	4	2000	1-1/3"	13.12"	4.50	8.75	9-95KHD/SA-YA*-08701S01
10	4	2000	1-1/3"	15.25"	4.50	9.75	9-95KHD/SA-YA*-10701S01
10	5	3000	1-1/3"	15.25"	4.50	9.75	9-95KHD/SA-YA*-10801S01
12	4	3000	1-1/3"	17.25"	5.31	11.50	9-95KHD/SA-YA*-12701S01
12	5	3000	1-1/3"	17.25"	5.31	11.62	9-95KHD/SA-YA*-12801S01
12	6	3000	1-1/3"	17.25"	5.31	11.75	9-95KHD/SA-YA*-12901S01

For rigid casters, change “S” to “R” (i.e. 9-95KHD/SA-YA\*-06401S becomes 9-95KHD/SA-YA\*-06401R)

**Consult Acorn™ for all Kingpinless Spring Loaded Applications.**