



Series	Caster Type	Page #
10-98K	Kingpinless	2-4
10-98KM/DW	Kingpin - Dual Wheel	5
10-98K/DW	Kingpinless - Dual Wheel	6-7
10-98KHD/DW	Kingpinless - Dual Wheel	8-9
10-98K/DW/PA	Kingpinless Dual Wheel Pivoting Axle	10

Nylacron Wheels with Precision Ball Bearings for any application (NY/MD, NY/HSB, NY/MC, NY/GF)

Nylacron™ wheels with proper sized precision bearings are made to fit in any rig hub length and axle size. Nylacron™ wheels have greater load capacity ratings with better rollability while requiring less maintenance and have longer life.



VULKOLLAN® & Premium Urethanes

with Precision Ball Bearings for Any Application



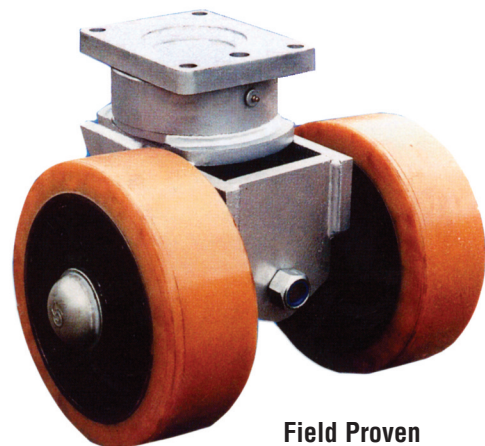
Vulkollan® 93A
Cast Iron Core



Urethane 93A
Cast Iron Core



Urethane Soft 75-80A
Cast Iron Core

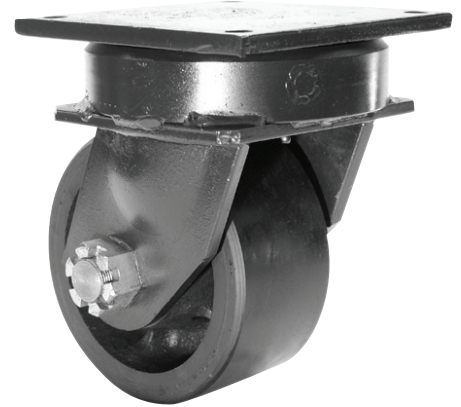


Field Proven and Job Rated

FEATURES

Load Capacity Up to 40,000 lbs.

- Typical applications include ground support equipment, die carts, and aircraft engine stands.
- Leg thickness of 1/2" adds extra strength and durability.
- Raceway Design: Patented Kingpinless single ball bearing precision machined raceway hardened to 53 Rockwell C Minimum, 7" diameter raceway with 3/4" diameter ball bearings
- Finish: Laguna Blue paint
- Wheels: Either 3", 4", 5" or 6" wide depending upon wheel size and type. Wheels have either a 3/4", 1", 1-1/4" or 1-1/2" roller bearing or 3/4", 1", 1-1/4" tapered wheel bearings. Roller bearing wheels rotate on a hardened and ground spanner, tapered wheel bearings rotate on the axle. All wheels are equipped with lubrication fittings.
- Mounting Plate Size: 8-1/2" x 8-1/2" x 1/2"
- Bolt Hole Spacing: 7" x 7"



RIG OPTIONS

NY	Notched Yoke Base
SL/W	Swivel Lock Welded
SL/FA	Swivel Lock Field Attachable
SL/D	Swivel Lock Demountable
HT	High Temp Lubrication
LT	Low Temp Lubrication
HDSL	Heavy-Duty Threaded Swivel Lock
SSR	Sealed Swivel Raceway
WS	Wheel Seals
ZP	Zinc Plated

BRAKE OPTIONS

SSB	Single Side Brake
DSB	Double Side Brake
PCWB	Poly Cam Wheel Brake
FCWB	Face Contact Wheel Brake

SWIVEL CROSS SECTION



MOUNTING PLATE

Top Plate	Plate Size	Bolt Hole Spacing	Bolt Size
94	8-1/2" x 8-1/2"	7" x 7"	5/8"
LL	8-1/2" x 11"	7" x 9-3/4"	5/8"

10-98K Series – Kingpinless

10

SPECIFICATIONS

Wheel Type (Wheel Code)	Dia. (in.)	Width (in.)	Capacity (lbs.)	OAH (in.)	Swl. Lead (in.)	Wt. (lbs.)	Swivel Part Number Add B, P, PL, R or T*
FORGED STEEL (FS) WHEELS WITH ROLLER BEARINGS							
	8	4	20,000	11-1/2	2-3/16	86	10-98K-FS-R-0840-S
	10	4	20,000	13	2-9/16	100	10-98K-FS-R-1040-S
FORGED STEEL / V-GROOVE (FS/VG) WHEELS WITH ROLLER BEARINGS							
	8	4	15,000	11-1/2	2-3/16	80	10-98K-FS/VG-R-0840-S
	10	4	15,000	13	2-9/16	92	10-98K-FS/VG-R-1040-S
CAST IRON (CA) WHEELS WITH TAPERED ROLLER BEARINGS							
	8	4	4000	11-1/2	2-3/16	70	10-98K-CA-R-0840-S
	10	4	5000	13	2-9/16	90	10-98K-CA-R-1040-S
	10	5	6000	13	2-9/16	95	10-98K-CA-R-1050-S
	11	6	10,000	14	2-3/4	95	10-98K-CA-R-1160-S
	12	6	10,000	15-1/2	3-3/8	130	10-98K-CA-R-1260-S
NYLACRON™ MD (NY/MD) WHEELS WITH PRECISION BALL BEARINGS							
	8	4	20,000	11-1/2	2-3/16	60	10-98K-NY/MD-P-0840-S
	10	4	20,000	13	2-9/16	72	10-98K-NY/MD-P-1040-S
	10	5	20,000	13	2-9/16	75	10-98K-NY/MD-P-1050-S
	11	5	20,000	14	2-5/8	80	10-98K-NY/MD-P-1150-S
	11	6	20,000	14	2-3/4	82	10-98K-NY/MD-P-1160-S
	12	4	20,000	15-1/2	3-3/8	78	10-98K-NY/MD-P-1240-S
	12	5	20,000	15-1/2	3-3/8	82	10-98K-NY/MD-P-1250-S
	12	6	20,000	15-1/2	3-3/8	84	10-98K-NY/MD-P-1260-S
	14	4	20,000	18	3-11/16	90	10-98K-NY/MD-P-1440-S
	14	5	20,000	18	3-11/16	92	10-98K-NY/MD-P-1450-S
	14	6	20,000	18	3-11/16	94	10-98K-NY/MD-P-1460-S
	16	4	20,000	19	3-9/16	96	10-98K-NY/MD-P-1640-S
	16	5	20,000	19	3-9/16	98	10-98K-NY/MD-P-1650-S
	18	5	20,000	22	4-1/4	100	10-98K-NY/MD-P-1850-S
	20	5	20,000	23	4-1/4	104	10-98K-NY/MD-P-2050-S
VULKOLLAN™ / CAST IRON CORE (VU/CA) WHEELS WITH PRECISION BALL BEARINGS							
	8	4	3500	11-1/2	2-3/16	62	10-98K-VU/CA-P-0840-S
	10	4	4200	13	2-9/16	75	10-98K-VU/CA-P-1040-S
	10	5	5000	13	2-9/16	80	10-98K-VU/CA-P-1050-S
	11	5	5500	14	2-5/8	85	10-98K-VU/CA-P-1150-S
	12	4	4800	15-1/2	3-3/8	78	10-98K-VU/CA-P-1240-S
	12	5	6000	15-1/2	3-3/8	90	10-98K-VU/CA-P-1250-S
	12	6	7500	15-1/2	3-3/8	95	10-98K-VU/CA-P-1260-S
	16	4	6000	19	3-9/16	130	10-98K-VU/CA-P-1640-S
	14	4	6200	18	3-11/16	90	10-98K-VU/CA-P-1440-S
	14	5	7600	18	3-11/16	85	10-98K-VU/CA-P-1450-S
	14	6	9000	18	3-11/16	140	10-98K-VU/CA-P-1460-S
	16	5	8400	19	3-9/16	140	10-98K-VU/CA-P-1650-S
	18	5	8600	22	4-1/4	138	10-98K-VU/CA-P-1850-S
	20	5	9000	23	4-1/4	149	10-98K-VU/CA-P-2050-S
URETHANE / CAST IRON CORE (UR/CA) WHEELS WITH PRECISION BALL BEARINGS							
	8	4	3500	11-1/2	2-3/16	62	10-98K-UR/CA-P-0840-S
	10	4	4200	13	2-9/16	75	10-98K-UR/CA-P-1040-S
	10	5	5000	13	2-9/16	80	10-98K-UR/CA-P-1050-S
	11	5	5500	14	2-5/8	85	10-98K-UR/CA-P-1150-S
	12	4	4800	15-1/2	3-3/8	78	10-98K-UR/CA-P-1240-S
	12	5	6000	15-1/2	3-3/8	90	10-98K-UR/CA-P-1250-S
	12	6	7500	15-1/2	3-3/8	95	10-98K-UR/CA-P-1260-S
	16	4	6000	19	3-9/16	130	10-98K-UR/CA-P-1640-S
	16	5	8400	19	3-9/16	140	10-98K-UR/CA-P-1650-S
	18	5	8600	22	4-1/4	138	10-98K-UR/CA-P-1850-S
	20	5	9000	23	4-1/4	149	10-98K-UR/CA-P-2050-S

(Continued on Next Page)

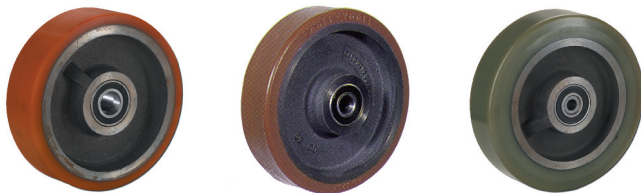
SPECIFICATIONS

Wheel Type (Wheel Code)	Dia. (in.)	Width (in.)	Capacity (lbs.)	OAH (in.)	Swl. Lead (in.)	Wt. (lbs.)	Swivel Part Number Add B, P, PL, R or T*
ULTRA THICK POLYURETHANE / CAST IRON CORE (PY/UT/CA) WHEELS WITH PRECISION BALL BEARINGS							
	10	4	4500	13	2-9/16	62	10-98K-PY/UT/CA-P-1040-S
	12	4	5300	15-1/2	3-3/8	75	10-98K-PY/UT/CA-P-1240-S
	12	5	6500	15-1/2	3-3/8	78	10-98K-PY/UT/CA-P-1250-S
	14	4	6200	18	3-11/16	90	10-98K-PY/UT/CA-P-1440-S
	14	5	7600	18	3-11/16	85	10-98K-PY/UT/CA-P-1450-S
	14	6	9000	18	3-11/16	140	10-98K-PY/UT/CA-P-1460-S
	16	4	7100	19	3-9/16	97	10-98K-PY/UT/CA-P-1640-S
	16	5	8800	19	3-9/16	130	10-98K-PY/UT/CA-P-1650-S
ELASTIC RUBBER / CAST IRON CORE (ER/CA) WHEELS WITH PRECISION BALL BEARINGS							
	10	4	1400	13	2-9/16	72	10-98K-ER/CA-P-1040-S
	11	5	1760	14	2-5/8	85	10-98K-ER/CA-P-1150-S
	12	4	1600	15-1/2	3-3/8	78	10-98K-ER/CA-P-1240-S
	12	5	2050	15-1/2	3-3/8	90	10-98K-ER/CA-P-1250-S
	16	4	2050	19	3-9/16	130	10-98K-ER/CA-P-1640-S
	16	5	2570	19	3-9/16	140	10-98K-ER/CA-P-1650-S
	18	5	2800	22	4-1/4	150	10-98K-ER/CA-P-1850-S
	20	5	2050	23	4-1/4	155	10-98K-ER/CA-P-2050-S

*Add "B" for Ball Bearing, "P" for Precision Bearing, "PL" for Plain Bearing, "R" for Roller Bearing or "T" for Tapered Bearing.
 All load ratings are for manual operation at 2 mph.
 For **Rigid Casters**, change "S" to "R" at the end of the part number.
 All **Rig Options** should be added to the end of the part number.

VULKOLLAN® & Premium Urethanes

with Precision Ball Bearings for Any Application



Vulkollan® 93A
Cast Iron Core

Urethane 93A
Cast Iron Core

Urethane Soft 75-80A
Cast Iron Core

Nylacron™ Wheels

With Precision Ball Bearings for Any Application:

(NY/MD, NY/HSB, NY/MC, NY/GF)

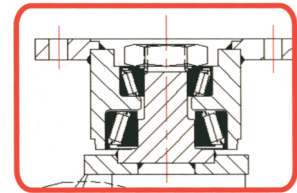
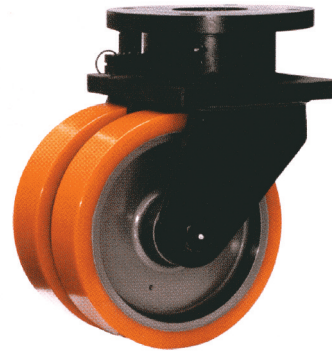
Nylacron™ wheels with proper sized precision bearings are made to fit in any rig hub length and axle size. Nylacron™ wheels have greater load capacity ratings with better rollability while requiring less maintenance and have longer life.



FEATURES

Load Capacity Up to 25,300 lbs.

- Extra heavy fabricated steel top plate and fork base
- Combination of heavy duty opposed spherical roller thrust bearings in the swivel head allows this caster to swivel easily, even under the most punishing conditions
- Totally sealed swivel head with grease nipple
- 35mm wheel axle
- Finish is zinc plated, ROHS compliant or black polymer color-coated



Cross Section

RIG OPTIONS

- DL** 4-Way Directional Lock
WFB Wheel Face Brake

TOP PLATE

- Top Plate:** 365mm
Bolt Hole Centers: 4 Holes at p.c.d.
Attaching Bolt: 24mm

10-98KM/DW CASTERS with PRECISION BALL BEARING WHEELS

Part Number Swivel Caster	Swivel Caster with Anti-Static Wheel	Part Number Dia. x Tread (mm)	Swl OAH (mm)	Top Radius (mm)	Bolt Hole Plate (mm)	Attaching Centers (mm)	Bolt (mm)	Cap. (lb)
Premium Polyurethane with Precision Machined Cast Iron Core (UR/CA) Wheels with Precision Ball Bearings								
10-98M/DW-UR/CA-P-450/125-S	10-98M/DW-UR/CA/AS-P-450/125-S	450x125x2	570	350	365 Dia	4 Holes	24 300 p.c.d.	25,300
Nylacron™ MD (NY/MD) Black Wheels with Stainless Steel Precision Ball Bearings								
10-98M/DW-NY/MD-P-450/125-S	10-98M/DW-NY/MD/AS-P-450/125-S	450x125x2	570	350	365 Dia	4 Holes	24 300 p.c.d.	25,300
Nylacron™ Monocast (NY/MC) White Wheels with Stainless Steel Precision Ball Bearings								
10-98M/DW-NY/MC-P-450/125-S	10-98M/DW-NY/MC/AS-P-450/125-S	450x125x2	570	350	365 Dia	4 Holes	24 300 p.c.d.	25,300

*Add "B" for Ball Bearing, "P" for Precision Bearing, "PL" for Plain Bearing, "R" for Roller Bearing or "T" for Tapered Bearing.

All load ratings are for manual operation at 2 mph.
 For **Rigid Casters**, change "S" to "R" at the end of the part number.
 All **Rig Options** should be added to the end of the part number.

VULKOLLAN® & Premium Urethanes

with Precision Ball Bearings for Any Application



Vulkollan® 93A
Cast Iron Core



Urethane 93A
Cast Iron Core



Urethane Soft 75-80A
Cast Iron Core

Nylacron™ Wheels

With Precision Ball Bearings for Any Application:
 (NY/MD, NY/HSB, NY/MC, NY/GF)

Nylacron™ wheels with proper sized precision bearings are made to fit in any rig hub length and axle size. Nylacron™ wheels have greater load capacity ratings with better rollability while requiring less maintenance and have longer life.



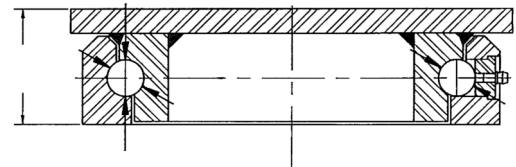
FEATURES

Load Capacity Up to 40,000 lbs.

- Raceway Design: Patented Kingpinless single ball bearing precision machined raceway hardened to 53 Rockwell C. minimum. 7” diameter raceway with 3/4” diameter ball bearings.
- Axle: 1-1/4” bolt with rotation prevent lug on leg and slotted nut adjustment
- Finish: Laguna Blue paint
- Wheels: Wheels are either 4”, 5” or 6” wide depending upon diameter and wheel type. Roller bearing wheels are equipped with a bearing which rotates on hardened and ground spacers. Tapered bearing wheels have a 1-1/4” I.D. tapered bearing which rotate directly on a 1-1/4” axle. All wheels have lubrication fittings.
- Leg Thickness: 1/2” thick including the center leg



SWIVEL CROSS SECTION



RIG OPTIONS

- DSL*** Demountable Swivel Lock*
- HDSL** Heavy Duty Demountable Swivel Lock
- HT** High Temperature Lubrication
- LT** Low Temperature Lubrication
- NY** Notched Yoke
- PCWB** Poly Cam Wheel Brake
- SL** Swivel Lock
- SR** Sealed Swivel Raceway
- WS** Wheel Seals
- ZP** Zinc Plated

*When ordering DSL, you must also order NY.

MOUNTING PLATE

Top Plate	Plate Size	Bolt Hole Spacing	Bolt Size
94	8-1/2" x 8-1/2"	7" x 7"	5/8"
LL	8-1/2" x 11"	7" x 9-3/4"	5/8"

VULKOLLAN® & Premium Urethanes

with Precision Ball Bearings for Any Application



Vulkollan® 93A
Cast Iron Core



Urethane 93A
Cast Iron Core



Urethane Soft 75-80A
Cast Iron Core

Nylacron™ Wheels

With Precision Ball Bearings for Any Application:

(NY/MD, NY/HSB, NY/MC, NY/GF)

Nylacron™ wheels with proper sized precision bearings are made to fit in any rig hub length and axle size. Nylacron™ wheels have greater load capacity ratings with better rollability while requiring less maintenance and have longer life.



SPECIFICATIONS

Wheel Type (Wheel Code)	Diameter (in.)	Width (in.)	Capacity (lbs.)	OAH (in.)	Swivel Lead (in.)	Wt. (lbs.)	Swivel Part Number Add B, P, PL, R or T*
FORGED STEEL (FS) WHEELS WITH TAPERED ROLLER BEARINGS							
	8	4	40,000	11-1/2	2-1/8	86	10-98K/DW-FS-T-0840-S
	10	4	40,000	13-1/2	2-1/2	100	10-98K/DW-FS-T-1040-S
CAST IRON (CA) WHEELS WITH TAPERED ROLLER BEARINGS							
	8	4	8000	11-1/2	2-1/8	70	10-98K/DW-CA-T-0840-S
	10	4	10,000	13-1/2	2-1/2	90	10-98K/DW-CA-T-1040-S
	10	5	12,000	13-1/2	2-1/2	95	10-98K/DW-CA-T-1050-S
NYLACRON™ MD (NY/MD) WHEELS WITH PRECISION BALL BEARINGS							
	8	4	20,000	11-1/2	2-1/8	60	10-98K/DW-NY/MD-P-0840-S
	10	4	20,000	13-1/2	2-1/2	72	10-98K/DW-NY/MD-P-1040-S
	10	5	20,000	13-1/2	2-1/2	75	10-98K/DW-NY/MD-P-1050-S
	12	4	20,000	15-1/2	2-1/2	78	10-98K/DW-NY/MD-P-1240-S
	12	5	20,000	15-1/2	2-1/2	82	10-98K/DW-NY/MD-P-1250-S
	12	6	20,000	15-1/2	2-1/2	84	10-98K/DW-NY/MD-P-1260-S
	14	4	20,000	18-1/2	2-1/2	90	10-98K/DW-NY/MD-P-1440-S
	14	5	20,000	18-1/2	2-1/2	92	10-98K/DW-NY/MD-P-1450-S
	14	6	20,000	18-1/2	2-1/2	94	10-98K/DW-NY/MD-P-1460-S
	16	4	20,000	19-1/2	2-1/2	96	10-98K/DW-NY/MD-P-1640-S
	16	5	20,000	19-1/2	2-1/2	98	10-98K/DW-NY/MD-P-1650-S
	18	5	20,000	22	2-1/2	100	10-98K/DW-NY/MD-P-1850-S
	20	5	20,000	23-1/2	2-1/2	104	10-98K/DW-NY/MD-P-2050-S
URETHANE / CAST IRON CORE (UR/CA) WHEELS WITH TAPERED ROLLER BEARINGS							
	8	4	7000	11-1/2	2-1/8	62	10-98K/DW-UR/CA-T-0840-S
	10	4	8400	13-1/2	2-1/2	75	10-98K/DW-UR/CA-T-1040-S
	10	5	10,000	13-1/2	2-1/2	115	10-98K/DW-UR/CA-T-1050-S
	12	4	9600	15-1/2	2-1/2	78	10-98K/DW-UR/CA-T-1240-S
	12	5	12,000	15-1/2	2-1/2	90	10-98K/DW-UR/CA-T-1250-S
	12	6	15,000	15-1/2	2-1/2	95	10-98K/DW-UR/CA-T-1260-S
	14	6	18,000	18-1/2	2-1/2	170	10-98K/DW-UR/CA-T-1460-S
	16	4	12,000	19-1/2	2-1/2	130	10-98K/DW-UR/CA-T-1640-S
	16	5	16,800	19-1/2	2-1/2	200	10-98K/DW-UR/CA-T-1650-S
	18	5	17,200	22	2-1/2	270	10-98K/DW-UR/CA-T-1850-S
	20	5	18,000	23-1/2	2-1/2	280	10-98K/DW-UR/CA-T-2050-S
URETHANE / THICK TREAD / CAST IRON CORE (UR/TT/CA) WHEELS WITH TAPERED ROLLER BEARINGS							
	10	4	9000	13-1/2	2-1/2	95	10-98K/DW-UR/TT/CA-T-1040-S
	12	4	10,600	15-1/2	2-1/2	90	10-98K/DW-UR/TT/CA-T-1240-S
	12	5	13,000	15-1/2	2-1/2	100	10-98K/DW-UR/TT/CA-T-1250-S
	14	4	12,400	18-1/2	2-1/2	120	10-98K/DW-UR/TT/CA-T-1440-S
	14	5	15,200	18-1/2	2-1/2	150	10-98K/DW-UR/TT/CA-T-1450-S
	16	4	14,200	19-1/2	2-1/2	130	10-98K/DW-UR/TT/CA-T-1640-S
	16	5	17,600	19-1/2	2-1/2	210	10-98K/DW-UR/TT/CA-T-1650-S

*Add "B" for Ball Bearing, "P" for Precision Bearing, "PL" for Plain Bearing, "R" for Roller Bearing or "T" for Tapered Bearing.

All load ratings are for manual operation at 2 mph.

For **Rigid Casters**, change "S" to "R" at the end of the part number.

All **Rig Options** should be added to the end of the part number.

FEATURES

Load Capacity Up to 30,000 lbs.

- Top Plate: 3/4" thick AISI 1045 steel one-piece forging precision machined and through-hardened for long life
- Yoke Base: AISI 1045 steel forging welded using 100,000 psi weld filler to 3/4" thick adapter plate
- Swivel Section: 7/8" ball bearings mounted in a 7" diameter precision machined raceway
- Legs: 3/4" thick through-hardened steel welded to yoke base using 100,000 psi weld filler
- Axle: 1-1/4" diameter
- **Alternate or custom caster configurations available**



RIG OPTIONS

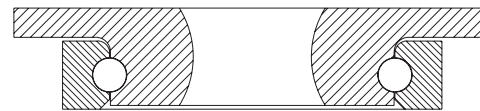
SLHO Swivel Lock - Hand Operated Detachable

SLHO Swivel Lock - Hand Operated

NY850 Notched yoke base for swivel locks

Spring-Loaded Models Available,
consult Acorn™. Single models also available.

SWIVEL CROSS SECTION



BRAKE OPTIONS

FCB Face Contact Brake

MOUNTING PLATE (SWIVEL / RIGID)

Top Plate	Plate Size	Bolt Hole Spacing	Bolt Size
98K	12" x 12"	10 x 10"	5/8"

Nylacron™ Wheels

With Precision Ball Bearings for Any Application:
(NY/MD, NY/HSB, NY/MC, NY/GF)

Nylacron™ wheels with proper sized precision bearings are made to fit in any rig hub length and axle size. Nylacron™ wheels have greater load capacity ratings with better rollability while requiring less maintenance and have longer life.

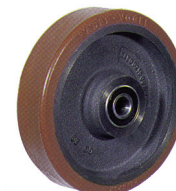


VULKOLLAN® & Premium Urethanes

with Precision Ball Bearings for Any Application



Vulkollan® 93A
Cast Iron Core



Urethane 93A
Cast Iron Core



Urethane Soft 75-80A
Cast Iron Core

10-98KHD/DW DUAL WHEEL KINGPINLESS CASTER SPECIFICATIONS

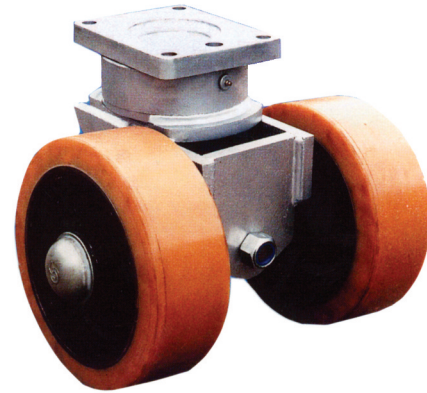
Wheel Type (Wheel Code)	Diameter (in.)	Width (in.)	Capacity (lbs.)	OAH (in.)	Swivel Lead (in.)	Swivel Part Number Add B, P, PL, R or T*
HEAVY DUTY FORGED STEEL (FS/HD) WHEELS WITH PRECISION BALL BEARINGS						
	6	3	30,000	11	2-1/16	10-98KHD/DW-FS/HD-P-0630-S
	10	4	30,000	14-3/4	3-1/4	10-98KHD/DW-FS/HD-P-1040-S
NYLACRON™ MD (NY/MD) WHEELS WITH PRECISION BALL BEARINGS						
	6	3	20,000	11	3-1/4	10-98KHD/DW-NY/MD-P-0630-S
	10	4	20,000	14-3/4	3-1/4	10-98KHD/DW-NY/MD-P-1040-S
	12	4	20,000	15-3/4	3-1/4	10-98KHD/DW-NY/MD-P-1240-S
	12	4-1/2	20,000	15-3/4	3-1/4	10-98KHD/DW-NY/MD-P-1245-S
	12	5	20,000	15-3/4	3-1/4	10-98KHD/DW-NY/MD-P-1250-S
	12	6	20,000	15-3/4	3-1/4	10-98KHD/DW-NY/MD-P-1260-S
	16	4	20,000	19-3/4	4-1/2	10-98KHD/DW-NY/MD-P-1640-S
	16	5	20,000	19-3/4	4-1/2	10-98KHD/DW-NY/MD-P-1650-S
	18	5	20,000	22	5-1/4	10-98KHD/DW-NY/MD-P-1850-S
	18	6	20,000	22	4-1/2	10-98KHD/DW-NY/MD-P-1860-S
POLYURETHANE / CAST IRON CORE (PY/CA) WHEELS WITH PRECISION BALL BEARINGS						
	12	4	9600	15-3/4	3-1/4	10-98KHD/DW-PY/CA-P-1240-S
	16	4	11,940	19-3/4	4-1/2	10-98KHD/DW-PY/CA-P-1640-S
	16	5	15,400	19-3/4	4-1/2	10-98KHD/DW-PY/CA-P-1650-S
	18	5	16,800	22	5-1/4	10-98KHD/DW-PY/CA-P-1850-S
PRESS-ON POLYURETHANE (OG) WHEELS WITH PRECISION BALL BEARINGS						
	12	4-1/2	12,000	15-3/4	3-1/4	10-98KHD/DW-OG-P-1245-S
	18	6	20,000	22	4-1/2	10-98KHD/DW-OG-P-1860-S
POLYURETHANE / THICK TREAD CAST IRON CORE (PY/TT/CA) WHEELS WITH PRECISION BALL BEARINGS						
	12	4	9600	15-3/4	3-1/4	10-98KHD/DW-PY/TT/CA-P-1240-S
	12	5	12,000	15-3/4	3-1/4	10-98KHD/DW-PY/TT/CA-P-1250-S
	16	4	11,940	19-3/4	4-1/2	10-98KHD/DW-PY/TT/CA-P-1640-S
	16	5	15,400	19-3/4	4-1/2	10-98KHD/DW-PY/TT/CA-P-1650-S
MOLDON RUBBER / CAST IRON CORE (MR/CA) WHEELS WITH PRECISION BALL BEARINGS						
	12	4	3200	15-3/4	3-1/4	10-98KHD/DW-MR/CA-P-1240-S
	16	4	3980	19-3/4	4-1/2	10-98KHD/DW-MR/CA-P-1640-S
	16	5	5140	19-3/4	4-1/2	10-98KHD/DW-MR/CA-P-1650-S
	18	5	5600	22	5-1/4	10-98KHD/DW-MR/CA-P-1850-S
POLYURETHANE / ALUMINUM CORE (PY/AL) WHEELS WITH PRECISION BALL BEARINGS						
	12	6	15,000	15-3/4	3-1/4	10-98KHD/DW-PY/AL-P-1260-S

*Add "B" for Ball Bearing, "P" for Precision Bearing, "PL" for Plain Bearing, "R" for Roller Bearing or "T" for Tapered Bearing
 Dimensions shown are nominal. If precise dimensions are required, consult Acorn™. Additional wheels available.

FEATURES

Load Capacity Up to 26,400 lbs.

The use of Pivoting Axle Casters assures that if one wheel goes on a higher surface, the axle will pivot to keep both wheels under load. It is essential when handling heavy loads that both wheels remain on the ground at all times to avoid an over-stress condition. Pivoting Axles are available on the 10-98K/VXDW, 10-98K/VYDW and 10-98K/VZDW Series Casters.



10-98K/VXDW/PA DUAL WHEEL PIVOTING AXLE CASTER SPECIFICATIONS

Dia. A	OAH** B	Swivel Radius C	Tread Width D	Speed (kph)	Wheel Type	Load Capacity	Swivel Part Number (Add T, R or P)*
330 mm	441 mm	400 mm	127 mm	16	Vulkollan™ / CA Core VY	3960 lbs	10-98K/VXDW/PA-VY-T-330-S

10-98K/VYDW/PA DUAL WHEEL PIVOTING AXLE CASTER SPECIFICATIONS

Dia. A	OAH** B	Swivel Radius C	Tread Width D	Speed (kph)	Wheel Type	Load Capacity	Swivel Part Number (Add T, R or P)*
400 mm	441 mm	400 mm	100 mm	6	VY-Vulkollan / CA Core	13,200 lbs	10-98K/VYDW/PA-VY-T-400-S

10-98K/VZDW/PA DUAL WHEEL PIVOTING AXLE CASTER SPECIFICATIONS

Dia. A	OAH** B	Swivel Radius C	Tread Width D	Speed (kph)	Wheel Type	Load Capacity	Swivel Part Number (Add T, R or P)*
432 mm	515 mm	440 mm	127 mm	6	Vulkollan™ / CA Core VY	26,400 lbs	10-98K/VZDW/PA-VY-T-432-S

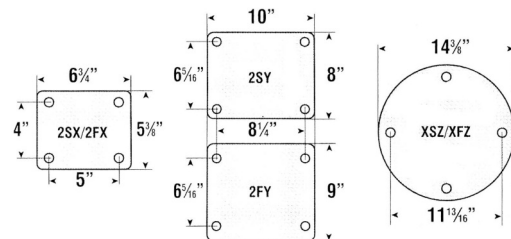
To order a rigid caster, change the "S" to "R" in the model number.
 *Add "T" for Tapered Bearing, "R" for Roller Bearing or "P" for Precision Bearing.
 For approximate weight of our rigid casters, deduct 12 1/2 pounds per item.
 **Optional heights available.

Call Acorn™ toll free (800.523.5474) for recommendations on any application.

Nylacron™ Wheels

With Precision Ball Bearings for Any Application:
 (NY/MD, NY/HSB, NY/MC, NY/GF)

Nylacron™ wheels with proper sized precision bearings are made to fit in any rig hub length and axle size. Nylacron™ wheels have greater load capacity ratings with better rollability while requiring less maintenance and have longer life.



2SY/2FY top plates have fixing holes to suit 3/8" diameter bolts.
 XSZ/XFZ top plates have fixing holes to suit 1" diameter bolts.

