



# MIRARO

## Standard Castors

A standard castor comes with various choices of mounting parts, wheel selections and braking methods making it a highly versatile component for your mobile institutional equipments.

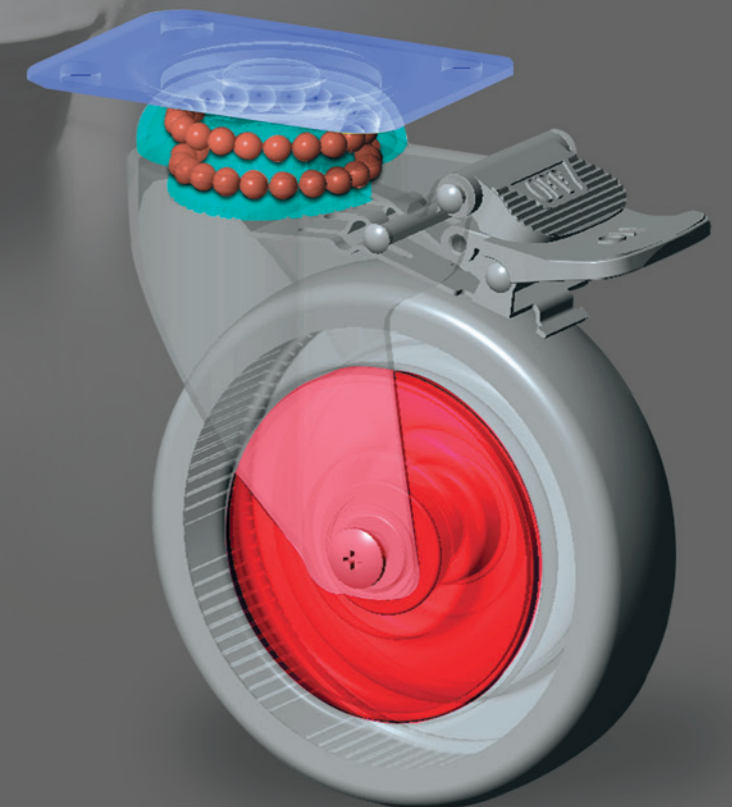
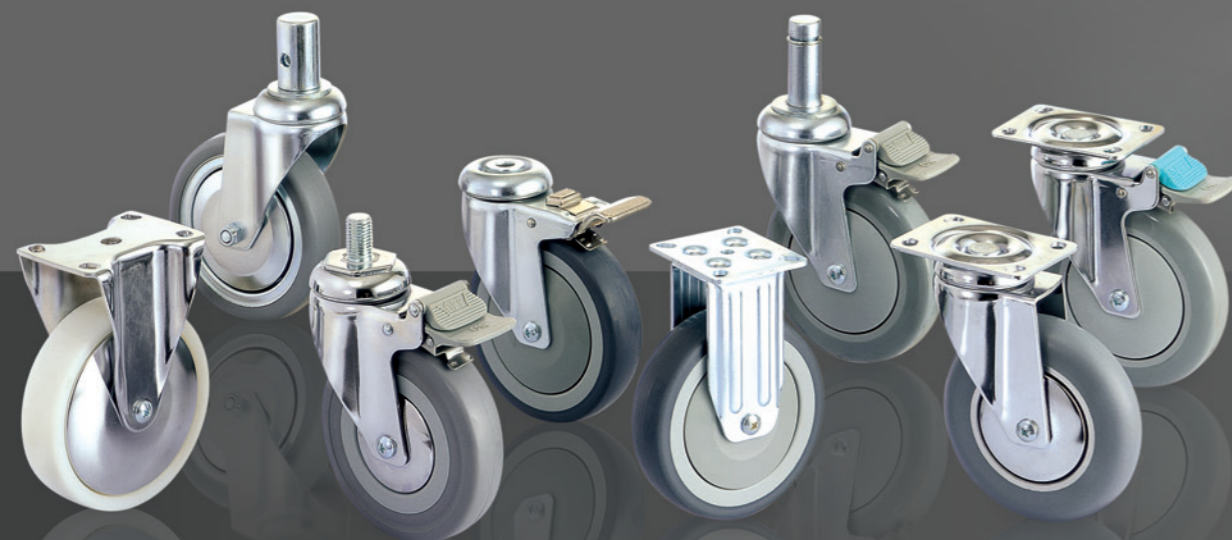
For more appealing appearance, there is also a choice of bright chrome plating over zinc-chromatized plating finish. Anti-static wheels are much preferred by the electronic industry and, wherever ESD poses a major concern to the manufacturing or assembly process.

**Application:**

Mobile transport equipments used in electronic industry; general trolleys/carts in airports; and other general institutional applications.

**Size Available:**

75x25, 100x25, 125x25, 75x32, 100x32, 125x32, 150x32, 200x32mm



Pressed steel, double ballrace swivel yoke, zinc-chromatized finish

Option: Bright chrome plated finish is also available, add suffix "-CR" to Catis code, e.g. Y580XP1/W503U-CR



### **TB/A** Total locking brake

Total Lock system locks both swivel head and wheel simultaneously for secure parking. Integrated ON/OFF Nylon brake pedals for easy and quiet operation.



### **DB/A** Directional locking brake

Directional Lock permits free wheel rotation while swivel head remains locked, an easy way to keep equipment traveling straight. Integrated ON/OFF Nylon brake pedals for easy and quiet operation. Release pedal in green color.

## **F** Friction Ring Stem



### TPR Wheel

Plastic hub, grey color thermoplastic rubber tire

Brake type	mm	mm	mm	mm	mm	mm	mm	mm	mm	mm	kg	Code
<b>TB/A</b> Total locking brake	75	25		11.1	12.0	35.2	25.4	1.6	30.0	107.0	45	Y360F5/W312
	100	32		21.5	23.0	55.0	45.2	2.4	40.5	135.0	80	Y480XF3/W403
	125	32		21.5	23.0	55.0	45.2	2.4	39.0	161.0	100	Y580XF3/W503
	125	32		21.5	23.0	55.0	45.2	2.4	39.0	161.0	100	Y580XF3/W503U
	150	32		21.5	23.0	55.0	45.2	2.4	50.0	189.5	100	Y680XF3/W603U
<b>TB/B</b> Total locking brake	100	32		21.5	23.0	55.0	45.2	2.4	40.5	135.0	80	Y480F3/W403
	125	32		21.5	23.0	55.0	45.2	2.4	39.0	161.0	100	Y580F3/W503
	125	32		21.5	23.0	55.0	45.2	2.4	39.0	161.0	100	Y580F3/W503U
	150	32		21.5	23.0	55.0	45.2	2.4	46.5	189.5	100	Y680F3/W603U
Non-brake Free swivel	75	25		11.1	12.0	35.2	25.4	1.6	30.0	107.0	45	Y361F5/W312
	100	32		21.5	23.0	55.0	45.2	2.4	40.5	135.0	80	Y481F3/W403
	125	32		21.5	23.0	55.0	45.2	2.4	39.0	161.0	100	Y581F3/W503
	125	32		21.5	23.0	55.0	45.2	2.4	39.0	161.0	100	Y581F3/W503U
	150	32		21.5	23.0	55.0	45.2	2.4	50.0	189.5	100	Y681F3/W603U





**TB/B** Total locking brake

Total Lock system simultaneously locks both swivel head and wheel for a secure parking.  
Zinc-alloy brake pedal.

**F** Friction Ring Stem

**TPU Wheel** Plastic hub, grey color polyurethane tire

Brake type	mm	mm	mm	mm	mm	mm	mm	mm	mm	mm	kg	Code
<b>TB/A</b> Total locking brake	100	32		21.5	23.0	55.0	45.2	2.4	40.5	135.0	80	Y480XF3/W400E
	125	32		21.5	23.0	55.0	45.2	2.4	39.0	161.0	100	Y580XF3/W500E
	150	32		21.5	23.0	55.0	45.2	2.4	50.0	189.5	100	Y680XF3/W600E
<b>TB/B</b> Total locking brake	100	32		21.5	23.0	55.0	45.2	2.4	40.5	135.0	80	Y480F3/W400E
	125	32		21.5	23.0	55.0	45.2	2.4	39.0	161.0	100	Y580F3/W500E
	150	32		21.5	23.0	55.0	45.2	2.4	46.5	189.5	100	Y680F3/W600E
Non-brake Free swivel	100	32		21.5	23.0	55.0	45.2	2.4	40.5	135.0	80	Y481F3/W400E
	125	32		21.5	23.0	55.0	45.2	2.4	39.0	161.0	100	Y581F3/W500E
	150	32		21.5	23.0	55.0	45.2	2.4	50.0	189.5	100	Y681F3/W600E

