

4MR-KZT - Zero Tolerance Precision Swivel

CONSTRUCTION FEATURES

Load Capacity Up to 1250 lbs.

- Top Plate/Yoke Base: Cold formed from 1/4" steel plate. Yoke base is notched for factory or field-installable 4-position swivel lock
- Swivel Section: Precision sealed ball bearing eliminates need for routine maintenance
- Legs: 1/4" steel, formed to increase strength and welded on inside and outside of yoke base
- Axle: 1/2" diameter hollow axle complete with lock nut with straight roller and ball bearings
- Finish: All parts, except wheel, are yellow zinc plated.



SWIVEL RIG OPTIONS

- SLHOFI** Swivel Lock - Hand Operated
Field Installable
- SLFOFI** Swivel Lock - Foot Operated
Field Installable

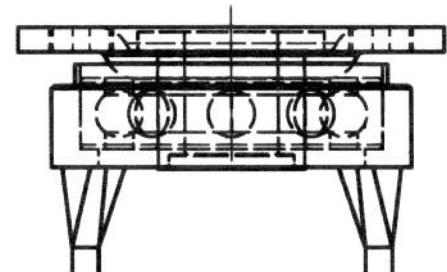
BRAKE OPTIONS

- CB** Cam Brake
- FBB** Face Brake
- FCB** Face Contact Brake

MOUNTING PLATE (SWIVEL / RIGID)

Top Plate	Plate Size	Bolt Hole Spacing	Bolt Size
16ZT	4" x 4 1/2"	2 5/8" x 3 5/8" slotted to 3" x 3"	3/8"
12ZT	5" x 5-1/2"	4-1/8" x 4-1/2"	3/8"
6ZT	4 1/2" x 6 1/4"	2 7/16" x 4 15/16" slotted to 3 3/8" x 5 1/4"	1/2"

SWIVEL CROSS SECTION



The Swivel-EAZ™ (Dual-in-One) wheel easily turns a single wheel caster rig into a dual wheel premium urethane tread caster. Available in 4 Durometers: 70A (Black), 80A (Red), 95A (Blue) and 60D (Gray)



Nylacron™ Wheels

With Precision Ball Bearings for Any Application
(NY/MD, NY/HSB, NY/MC, NY/GF)

Nylacron™ wheels with proper sized precision bearings are made to fit in any rig hub length and axle size. Nylacron™ wheels have greater load capacity ratings with better rollability while requiring less maintenance and have longer life.

4MR-KZT - Zero Tolerance Precision Swivel

CASTER SPECIFICATIONS

Wheel Type (Wheel Code)	Diameter (in.)	Width (in.)	Capacity (lbs.)	OAH (in.)	Whl Hub (in.)	Swl. Lead (in.)	Wt. (lbs.)	Swivel Part Number Add B, P, PL, R or T*
NYLACRON™ MD (NY/MD) WHEELS WITH PRECISION BALL BEARING								
	4	2	1250	5-5/8	2-7/16	1-1/4	7	4MR-KZT-NY/MD-P-0420-S
	5	2	1250	6-1/2	2-7/16	1-3/8	8	4MR-KZT-NY/MD-P-0520-S
	6	2	1250	7-1/2	2-7/16	1-5/8	9	4MR-KZT-NY/MD-P-0620-S
	8	2	1250	9-1/2	2-7/16	1-3/4	10	4MR-KZT-NY/MD-P-0820-S
SOLID ELASTOMER (SE) WHEELS WITH PRECISION BALL BEARING								
	4	2	900	5-5/8	2-7/16	1-1/4	7	4MR-KZT-SE-P-0420-S
	5	2	1000	6-1/2	2-7/16	1-3/8	8	4MR-KZT-SE-P-0520-S
	6	2	1100	7-1/2	2-7/16	1-5/8	9	4MR-KZT-SE-P-0620-S
	8	2	1200	9-1/2	2-7/16	1-3/4	10	4MR-KZT-SE-P-0820-S
NYLON (NN) WHEELS WITH PRECISION BALL BEARING								
	4	2	800	5-5/8	2-7/16	1-1/4	6	4MR-KZT-NN-P-0420-S
	5	2	900	6-1/2	2-7/16	1-3/8	7	4MR-KZT-NN-P-0520-S
	6	2	1000	7-1/2	2-7/16	1-5/8	8	4MR-KZT-NN-P-0620-S
	8	2	1000	9-1/2	2-7/16	1-3/4	9	4MR-KZT-NN-P-0820-S
KRYPTONIC™ (KR) WHEELS WITH PRECISION BALL BEARING								
	4	2	500	5-5/8	2-7/16	1-1/4	6	4MR-KZT-KR-P-0420-S
	5	2	700	6-1/2	2-7/16	1-3/8	7	4MR-KZT-KR-P-0520-S
	6	2	900	7-1/2	2-7/16	1-5/8	8	4MR-KZT-KR-P-0620-S
	8	2	1000	9-1/2	2-7/16	1-3/4	9	4MR-KZT-KR-P-0820-S
EXTRATHANE® 92A / ALUMINUM CORE (UX/AL) WHEELS WITH PRECISION BALL BEARING								
	4	2	1000	5-5/8	2-7/16	1-1/4	8	4MR-KZT-UX/AL-P-0420-S
	5	2	1000	6-1/2	2-7/16	1-3/8	9	4MR-KZT-UX/AL-P-0520-S
	6	2	1000	7-1/2	2-7/16	1-5/8	10	4MR-KZT-UX/AL-P-0620-S
	8	2	1000	9-1/2	2-7/16	1-3/4	11	4MR-KZT-UX/AL-P-0820-S
EXTRATHANE® SOFT 80A / ALUMINUM CORE (UXS/AL) WHEELS WITH PRECISION BALL BEARING								
	4	2	650	5-5/8	2-7/16	1-1/4	8	4MR-KZT-UXS/AL-P-0420-S
	5	2	650	6-1/2	2-7/16	1-3/8	9	4MR-KZT-UXS/AL-P-0520-S
	6	2	650	7-1/2	2-7/16	1-5/8	10	4MR-KZT-UXS/AL-P-0620-S
	8	2	650	9-1/2	2-7/16	1-3/4	11	4MR-KZT-UXS/AL-P-0820-S
**SWIVEL-EAZ™ (DUAL-IN-ONE) URETHANE 95A / FLAT TREAD (SWE/9/FT) WHEELS WITH PRECISION BALL BEARING (AVAILABLE IN CROWN TREAD)								
	4	2	900	5-5/8	2-7/16	1-1/4	7	4MR-KZT-SWE/9/FT-P-0420-S
	5	2	1000	6-1/2	2-7/16	1-3/8	8	4MR-KZT-SWE/9/FT-P-0520-S
	6	2	1200	7-1/2	2-7/16	1-5/8	9	4MR-KZT-SWE/9/FT-P-0620-S
	8	2	1200	9-1/2	2-7/16	1-3/4	10	4MR-KZT-SWE/9/FT-P-0820-S
**SWIVEL-EAZ™ (DUAL-IN-ONE) URETHANE 80A / FLAT TREAD (SWE/8/FT) WHEELS WITH PRECISION BALL BEARING (AVAILABLE IN CROWN TREAD)								
	4	2	800	5-5/8	2-7/16	1-1/4	7	4MR-KZT-SWE/8/FT-P-0420-S
	5	2	700	6-1/2	2-7/16	1-3/8	8	4MR-KZT-SWE/8/FT-P-0520-S
	6	2	1200	7-1/2	2-7/16	1-5/8	9	4MR-KZT-SWE/8/FT-P-0620-S
	8	2	1200	9-1/2	2-7/16	1-3/4	10	4MR-KZT-SWE/8/FT-P-0820-S
**SWIVEL-EAZ™ (DUAL-IN-ONE) URETHANE 70A / FLAT TREAD (SWE/7/FT) WHEELS WITH PRECISION BALL BEARING (AVAILABLE IN CROWN TREAD)								
	4	2	500	5-5/8	2-7/16	1-1/4	7	4MR-KZT-SWE/7/FT-P-0420-S
	5	2	700	6-1/2	2-7/16	1-3/8	8	4MR-KZT-SWE/7/FT-P-0520-S
	6	2	900	7-1/2	2-7/16	1-5/8	9	4MR-KZT-SWE/7/FT-P-0620-S
	8	2	1200	9-1/2	2-7/16	1-3/4	10	4MR-KZT-SWE/7/FT-P-0820-S
**SWIVEL-EAZ™ (DUAL-IN-ONE) URETHANE 60D / FLAT TREAD (SWE/6/FT) WHEELS WITH PRECISION BALL BEARING (AVAILABLE IN CROWN TREAD)								
	4	2	1000	5-5/8	2-7/16	1-1/4	7	4MR-KZT-SWE/6/FT-P-0420-S
	5	2	1200	6-1/2	2-7/16	1-3/8	8	4MR-KZT-SWE/6/FT-P-0520-S
	6	2	1200	7-1/2	2-7/16	1-5/8	9	4MR-KZT-SWE/6/FT-P-0620-S
	8	2	1200	9-1/2	2-7/16	1-3/4	10	4MR-KZT-SWE/6/FT-P-0820-S

*Add "B" for Ball Bearing, "P" for Precision Bearing, "PL" for Plain Bearing, "R" for Roller Bearing or "T" for Tapered Bearing.

All load ratings are for manual operation at 2 mph.

For rigid casters, change "S" to "R" (i.e. 4MR-KZT-NY-P-0420-S becomes 4MR-KZT-NY-P-0420-R)

All Rig Options should be added to the end of the part number. (i.e. 4MR-KZT-NY-P-0420-SL for Swivel Lock)

**Swivel-Eaz™ (Dual-in-One) available in 70A and 60D in both Flat Tread and Crown Tread. See Wheel Section.