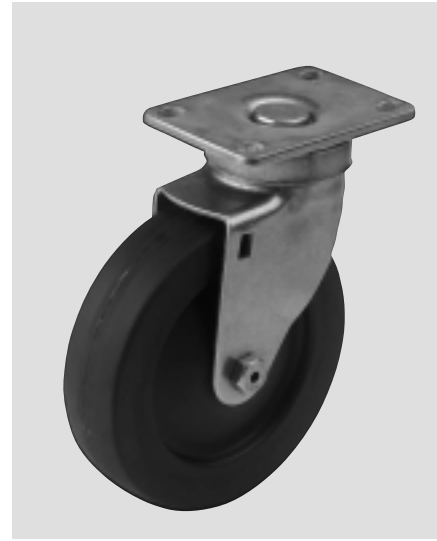


Stainless Steel



Designed to provide the ultimate

CORROSION PROTECTION

These casters are ideally suited for acetic, nitric and citric acid environments in addition to being well suited for organic and inorganic chemicals, dye stuffs, crude and refined oil environments. Widely accepted in the following industries:

- **DAIRY**
- **FOOD PROCESSING**
- **HOSPITALS & MEDICAL**
- **BEVERAGE**
- **PHARMACEUTICALS**
- **ANIMAL CAGES**

Made with non-magnetic, 303/304 stainless steel.

Diameter	Tread Width	Load Capacity	Wheel Material	Bearing	Swivel Part Number	Rigid Part Number	Approx. Weight	Overall Height	Swivel Radius	
2 1/2	1 1/4	200	NEOPRENE RUBBER	ACETAL	62 1/2-20-PDN-SS	62 1/2-20-PRDN-SS	2	3-3/4	2-3/8	
		400	HARD RUBBER	ACETAL	62 1/2-20-PH-SS	62 1/2-20-PRH-SS	3-1/2			
			STAINLESS STEEL	PLAIN	62 1/2-20-BSS-SS	62 1/2-20-BRSS-SS				
	1 3/8	125	EXTRA SOFT THERMO-PLASTIC RUBBER	DELIRIN	62 1/2-20-DPD-M-PO-55-SS	62 1/2-20-DRPD-M-PO-55-SS	2			
		200	THERMO-PLASTIC RUBBER	DELIRIN	62 1/2-20-DPD-M-PO-SS	62 1/2-20-DRPD-M-PO-SS				
		225	POLYOLEFIN	PLAIN	62 1/2-20-BPO-SS	62 1/2-20-BRPO-SS				
		400	ADVANCED ELASTOMER	DELIRIN	62 1/2-20-DAE	62 1/2-20-DRAE				
	400	POLYURETHANE / POLYOLEFIN HUB	DELIRIN	62 1/2-20-DADI-M-PO-SS	62 1/2-20-DRADI-M-PO-SS					
3	1 1/4	175	EXTRA SOFT NEOPRENE	ACETAL	63-20-PEZN-RD-SS	63-20-PREZN-RD-SS	2-1/4	4-15/16	2-3/4	
		200	NEOPRENE RUBBER	ACETAL	63-20-PDN-SS	63-20-PRDN-SS				
		400	ADVANCED ELASTOMER	DELIRIN	63-20-DAE-SS	63-20-DRAE-SS				
			HARD RUBBER	ACETAL	63-20-PH-SS	63-20-PRH-SS				
			PHENOLIC	ROLLER	63-20-TPR-SS	63-20-TRPR-SS				
		400	STAINLESS STEEL	PLAIN	63-20-BSS-SS	63-20-BRSS-SS	4-1/2			
	1 3/8	150	EXTRA SOFT THERMO-PLASTIC RUBBER	DELIRIN	63-20-DPD-M-PO-55-SS	63-20-DRPD-M-PO-55-SS	3			
		225	THERMO-PLASTIC RUBBER	DELIRIN	63-20-DPD-M-PO-SS	63-20-DRPD-M-PO-SS				
		240	POLYOLEFIN	PLAIN	63-20-BPO-SS	63-20-BRPO-SS				
		300	POLYURETHANE / POLYOLEFIN HUB	DELIRIN	63-20-DADI-M-PO-SS	63-20-DRADI-M-PO-SS				
		300	POLYURETHANE / POLYOLEFIN HUB	DELIRIN	63-20-DADI-M-PO-SS	63-20-DRADI-M-PO-SS				
3 1/2	1 1/4	200	NEOPRENE RUBBER	ACETAL	63 1/2-20-PDN-SS	63 1/2-20-PRDN-SS	2-1/4	4-3/4	3	
		250	HI-CAP NEOPRENE	ACETAL	63 1/2-20-PKN-SS	63 1/2-20-PRKN-SS	3-1/4			
		400	ADVANCED ELASTOMER	DELIRIN	63 1/2-20-DAE-SS	63 1/2-20-DRAE-SS				
			HARD RUBBER	ACETAL	63 1/2-20-PH-SS	63 1/2-20-PRH-SS				
			PHENOLIC	ROLLER	63 1/2-20-TPR-SS	63 1/2-20-TRPR-SS				
		400	STAINLESS STEEL	PLAIN	63 1/2-20-BSS-SS	63 1/2-20-BRSS-SS	5-5/8			
	1 3/8	160	EXTRA SOFT THERMO-PLASTIC RUBBER	DELIRIN	63 1/2-20-DPD-M-PO-55-SS	63 1/2-20-DRPD-M-PO-55-SS	3-1/4			
		240	THERMO-PLASTIC RUBBER	DELIRIN	63 1/2-20-DPD-M-PO-SS	63 1/2-20-DRPD-M-PO-SS				
		265	POLYOLEFIN	PLAIN	63 1/2-20-BPO-SS	63 1/2-20-BRPO-SS				
		360	POLYURETHANE / POLYOLEFIN HUB	DELIRIN	63 1/2-20-DADI-M-PO-SS	63 1/2-20-DRADI-M-PO-SS				
		360	POLYURETHANE / POLYOLEFIN HUB	DELIRIN	63 1/2-20-DADI-M-PO-SS	63 1/2-20-DRADI-M-PO-SS				
4	1 1/4	175	EXTRA SOFT NEOPRENE	ACETAL	64-20-PEZN-RD-SS	64-20-PREZN-RD-SS	2-1/2	5-1/4	3-1/4	
		200	NEOPRENE RUBBER	ACETAL	64-20-PDN-SS	64-20-PRDN-SS				
		250	HI-CAP NEOPRENE	ACETAL	64-20-PKN-SS	64-20-PRKN-SS				
		400	ADVANCED ELASTOMER	DELIRIN	64-20-DAE-SS	64-20-DRAE-SS				
			HARD RUBBER	ACETAL	64-20-PH-SS	64-20-PRH-SS				
	PHENOLIC		ROLLER	64-20-TPR-SS	64-20-TRPR-SS					
		400	STAINLESS STEEL	PLAIN	64-20-BSS-SS	64-20-BRSS-SS	7-1/8			
	1 3/8	170	EXTRA SOFT THERMO-PLASTIC RUBBER	DELIRIN	64-20-DPD-M-PO-55-SS	64-20-DRPD-M-PO-55-SS	3-1/2			
		250	THERMO-PLASTIC RUBBER	DELIRIN	64-20-DPD-M-PO-SS	64-20-DRPD-M-PO-SS				
		375	POLYOLEFIN	PLAIN	64-20-BPO-SS	64-20-BRPO-SS				
400		POLYURETHANE / POLYOLEFIN HUB	DELIRIN	64-20-DADI-M-PO-SS	64-20-DRADI-M-PO-SS					
		400	POLYURETHANE / POLYOLEFIN HUB	DELIRIN	64-20-DADI-M-PO-SS	64-20-DRADI-M-PO-SS				
5	1 1/4	200	NEOPRENE RUBBER	ACETAL	65-20-PDN-SS	65-20-PRDN-SS	3	6-1/4	4-3/4	
		250	HI-CAP NEOPRENE	ACETAL	65-20-PKN-SS	65-20-PRKN-SS	3-1/2			
		400	ADVANCED ELASTOMER	DELIRIN	65-20-DAE-SS	65-20-DRAE-SS				
			HARD RUBBER	ACETAL	65-20-PH-SS	65-20-PRH-SS				
			PHENOLIC	ROLLER	65-20-TPR-SS	65-20-TRPR-SS				
		400	STAINLESS STEEL	PLAIN	65-20-BSS-SS	65-20-BRSS-SS	11-1/2			
	1 3/8	180	EXTRA SOFT THERMO-PLASTIC RUBBER	DELIRIN	65-20-DPD-M-PO-55-SS	65-20-DRPD-M-PO-55-SS	4			
		275	THERMO-PLASTIC RUBBER	DELIRIN	65-20-DPD-M-PO-SS	65-20-DRPD-M-PO-SS				
		400	POLYURETHANE / POLYOLEFIN HUB	DELIRIN	65-20-DADI-M-PO-SS	65-20-DRADI-M-PO-SS				
		440	POLYOLEFIN	PLAIN	65-20-BPO-SS	65-20-BRPO-SS				
		440	POLYOLEFIN	PLAIN	65-20-BPO-SS	65-20-BRPO-SS				
6	1 1/4	200	NEOPRENE RUBBER	ACETAL	66-20-PDN-SS	66-20-PRDN-SS	4-1/2	7-3/8	5-1/4	
		275	HI-CAP NEOPRENE	ACETAL	66-20-PKN-SS	66-20-PRKN-SS				
		400	HARD RUBBER	ACETAL	66-20-PH-SS	66-20-PRH-SS				
	1 3/8	190	EXTRA SOFT THERMO-PLASTIC RUBBER	DELIRIN	66-20-DPD-M-PO-55-SS	66-20-DRPD-M-PO-55-SS				
		300	THERMO-PLASTIC RUBBER	DELIRIN	66-20-DPD-M-PO-SS	66-20-DRPD-M-PO-SS				
			400	POLYOLEFIN	PLAIN	66-20-BPO-SS				66-20-BRPO-SS
			400	POLYURETHANE / POLYOLEFIN HUB	DELIRIN	66-20-DADI-M-PO-SS				66-20-DRADI-M-PO-SS