

# SERIES

Dual-Wheel Industrial

Load Capacity: 200 to 400 lbs.

## Quality Features

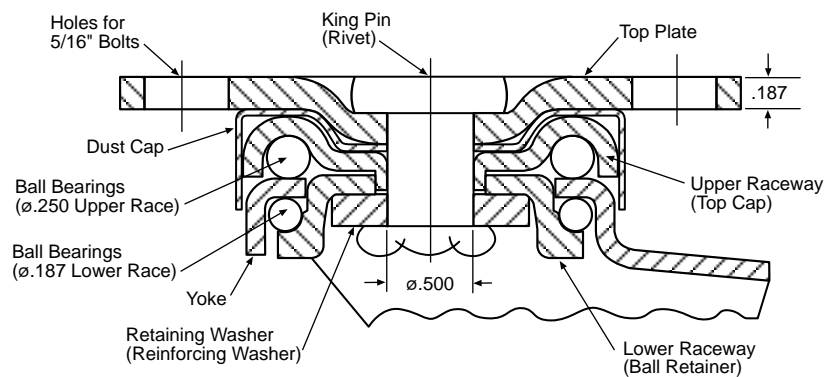
- FOUR-SIDED, DOUBLE BALL RACEWAY.**  
 Hardened steel ball bearings touch upper and lower swivel raceway "on all four sides." This protects the pin from shock loading for free swiveling under heavy loads.
- HEAT-TREATED MOVING PARTS.**  
 All moving parts are hardened to a precise molecular depth and Rockwell hardness. This extends caster life under rugged conditions and shock loads.
- RACEWAY DUST CAP.**  
 Dust cap protects the raceway from contamination by dust, dirt, moisture, and other environmental debris.
- LOW OVERALL HEIGHT.**  
 Heavy loads are supported by two wheels that roll independently to assure easy maneuverability in applications where a low profile is required.



## Options

- Thumb-Style Wheel Brake
- Conductive or Static-Dissipative Wheels
- Gray, Non-Marking Wheels
- Power Coated or Black Oxide Finishes
- Maintenance-Free Swivel Bearings

### FOUR SIDED DOUBLE BALL BEARING RACEWAY 30 SERIES



## Wheel Selection

NEOPRENE RUBBER



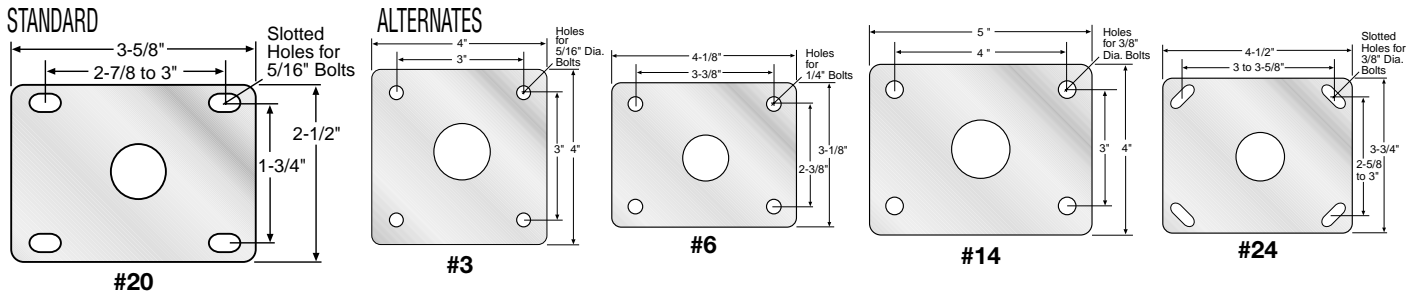
DONUT-STYLE NEOPRENE



HI-CAP NEOPRENE

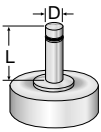


## TOP PLATE



## STEMS

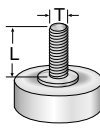
### "O" STEM TABLE



Dimension D	Dimension L	Stem Number
*1/2"	1-1/2"	O-12-112
5/8"	2"	O-58-2
*3/4"	2"	O-34-2
7/8"	2"	O-78-2
1"	2-1/2"	O-1-212

Other stem sizes and dimensions available.  
\*Special Order/Minimum Quantity

### "L" STEM TABLE



Dimension T	Dimension L	Stem Number
1/2"-13	1-1/2"	L-1213-112
1/2"-13	2"	L-1213-2
5/8"-11	2"	L-5811-2
*5/8"-11	2-1/2"	L-5811-212
3/4"-10	1-1/2"	L-3410-112
3/4"-10	2"	L-3410-2
3/4"-10	2-1/2"	L-3410-212

Diameter	Tread Width	Load Capacity	Wheel Material	Bearing	Swivel Part Number	Rigid Part Number	Approx. Weight	Overall Height	Swivel Radius
2	7/8	250	ROUND DONUT / NEOPRENE	BALL	32-20-XDN-RD	32-20-XRDN-RD	2	3-1/4	2-1/4
			NEOPRENE RUBBER	BALL	32-20-XDN	32-20-XRDN			
		300	HI-CAP NEOPRENE	BALL	32-20-XKN	32-20-XRKN			
			HARD RUBBER	BALL	32-20-XH	32-20-XRH			
2 1/2	7/8	250	NEOPRENE RUBBER	BALL	32 1/2-20-XDN	32 1/2-20-XRDN	2-1/2	3-3/4	2-5/8
		350	HARD RUBBER	BALL	32 1/2-20-XH	32 1/2-20-XRH			
			HI-CAP NEOPRENE	BALL	32 1/2-20-XKN	32 1/2-20-XRKN			
400	1 1/4	POLYURETHANE / CAST IRON HUB	BALL	32 1/2-20-XADI-M-CI	32 1/2-20-XRADI-M-CI	4			
		400	ADVANCED ELASTOMER	BALL	32 1/2-20-XAE	32 1/2-20-XRAE	2-1/2		
3	7/8	220	EXTRA SOFT NEOPRENE	ACETAL	33-20-PEZN-RD	33-20-PREZN-RD	2-3/4	7-1/4	3
			BALL	33-20-XEZN-RD	33-20-XREZN-RD				
		250	NEOPRENE RUBBER	ACETAL	33-20-PDN	33-20-PRDN			
			BALL	33-20-XDN	33-20-XRDN				
		350	HARD RUBBER	ACETAL	33-20-PH	33-20-PRH			
			BALL	33-20-XH	33-20-XRH				
375	HI-CAP NEOPRENE	ACETAL	33-20-PKN	33-20-PRKN					
	BALL	33-20-XKN	33-20-XRKN						
4	7/8	220	EXTRA SOFT NEOPRENE	ACETAL	34-20-PEZN-RD	34-20-PREZN-RD	3	5-1/4	3-1/2
			BALL	34-20-XEZN-RD	34-20-XREZN-RD				
		250	NEOPRENE RUBBER	ACETAL	34-20-PDN	34-20-PRDN			
			BALL	34-20-XDN	34-20-XRDN				
		375	HI-CAP NEOPRENE	ACETAL	34-20-PKN	34-20-PRKN			
			BALL	34-20-XKN	34-20-XRKN				
400	HARD RUBBER	ACETAL	34-20-PH	34-20-PRH					
	BALL	34-20-XH	34-20-XRH						
5	7/8	220	EXTRA SOFT NEOPRENE	ACETAL	35-20-PEZN-RD	35-20-PREZN-RD	3-1/4	6-1/4	4
			BALL	35-20-XEZN-RD	35-20-XREZN-RD				
		250	NEOPRENE RUBBER	ACETAL	35-20-PDN	35-20-PRDN			
			BALL	35-20-XDN	35-20-XRDN				
		375	HI-CAP NEOPRENE	ACETAL	35-20-PKN	35-20-PRKN			
			BALL	35-20-XKN	35-20-XRKN				
400	HARD RUBBER	ACETAL	35-20-PH	35-20-PRH					

HARD RUBBER

POLYURETHANE/CAST IRON

