

CONSTRUCTION FEATURES

Load Capacity Up to 2,500 lbs.

- Top Plate and Fork Base: Heavy duty steel construction with welded-in integral king pin secured with castle nut.
- Swivel Load Bearings: In the swivel section and in the head of the axle bolt.
- Top Plate Skirt Design: with seals insures dust and splash protection of the bearing units.
- Fork Legs: 1/4" thick steel formed to increase strength and welded yoke both inside and outside for added strength.
- Lubrication: Zerk fitting in swivel section
- Axle: 1/2" dia., solid with lock nut
- Fork Leg Spacing: 2 7/16"
- Finish: Yellow zinc dichromate for extra environmental protection

RIG OPTIONS

SL/WB78 Swivel lock wheel brake combination is extra heavy duty construction and can lock the swivel in any position with its unique design.



**Nylacron™ Wheel
Yellow Zinc Swivel
with Total Lock Brake**



**Pevopur™ Wheel
(95A Premium Urethane)
Yellow Zinc Swivel
with Total Lock Brake**



**Pevosoft™ Wheel
(80A Premium Urethane)
Yellow Zinc Swivel
with Total Lock Brake**

MOUNTING PLATE (SWIVEL / RIGID)

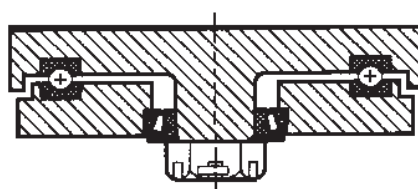
Top Plate	Plate Size	Bolt Hole Spacing	Bolt Size
78 (Standard)	4 1/2" x 6 1/4"	2 7/16" x 4 15/16" slotted to 3 3/8" x 5 1/4"	1/2"

Nylacron™ Wheels

Nylacron™ MD and Nylacron™ MC Monocast Wheels with Precision Ball Bearings for Any Application.

Nylacron™ wheels with proper sized Precision Bearings are made to fit in any rig hub length and axle size. Nylacron™ wheels have greater load capacity ratings with better rollability while requiring less maintenance and have longer life.

SWIVEL CROSS SECTION



CASTER SPECIFICATIONS

Wheel Type (Wheel Code)	Diameter (in.)	Width (in.)	Power Cap. (lbs.)	Man. Cap. (lbs.)	OAH (in.)	Whl Hub (in.)	Swl. Radius (mm.)	Swivel Part Number Add B, P, PL, R or T*
NYLACRON™ MD (NY/MD) WHEELS WITH PRECISION BEARING								
	5	2	2100	1400	7 1/4	2 7/16	50	5-78ZT-NY/MD-P-0520-S
	6	2	2200	1500	8	2 7/16	55	5-78ZT-NY/MD-P-0620-S
	8	2	2500	1600	9 1/2	2 7/16	60	5-78ZT-NY/MD-P-0820-S
VULKOLLAN™ 92A / CAST IRON CORE (VU/CA) WHEELS WITH PRECISION BEARING								
	5	2	1200	1000	7 1/4	2 7/16	50	5-78ZT-VU/CA-P-0520-S
	6	2	1500	1100	8	2 7/16	55	5-78ZT-VU/CA-P-0620-S
	8	2	2200	1400	9 1/2	2 7/16	60	5-78ZT-VU/CA-P-0820-S
URETHANE (PEVOPUR™) 92A / CAST IRON CORE (UR9/CA) WHEELS WITH PRECISION BEARING								
	5	2	1200	1000	7 1/4	2 7/16	50	5-78ZT-UR9/CA-P-0520-S
	6	2	1500	1100	8	2 7/16	55	5-78ZT-UR9/CA-P-0620-S
	8	2	2200	1400	9 1/2	2 7/16	60	5-78ZT-UR9/CA-P-0820-S
URETHANE (PEVOSOFT™) 80A / CAST IRON CORE (UR8/CA) WHEELS WITH PRECISION BEARING								
	5	2	1100	700	7 1/4	2 7/16	50	5-78ZT-UR8/CA-P-0520-S
	6	2	1200	800	8	2 7/16	55	5-78ZT-UR8/CA-P-0620-S
	8	2	1800	900	9 1/2	2 7/16	60	5-78ZT-UR8/CA-P-0820-S
**SWIVEL-EAZ™ (DUAL-IN-ONE) URETHANE 95A / FLAT TREAD (SWE/9/FT) WHEELS WITH PRECISION BALL BEARING								
	4	2	800	800	5-5/8	2-7/16	7	5-78ZT-SWE/9/FT-P-0420-S
	5	2	700	700	6-1/2	2-7/16	8	5-78ZT-SWE/9/FT-P-0520-S
	6	2	1200	1200	7-1/2	2-7/16	9	5-78ZT-SWE/9/FT-P-0620-S
	8	2	1200	1200	9-1/2	2-7/16	10	5-78ZT-SWE/9/FT-P-0820-S
**SWIVEL-EAZ™ (DUAL-IN-ONE) URETHANE 80A / FLAT TREAD (SWE/8/FT) WHEELS WITH PRECISION BALL BEARING								
	4	2	800	800	5-5/8	2-7/16	7	5-78ZT-SWE/8/FT-P-0420-S
	5	2	700	700	6-1/2	2-7/16	8	5-78ZT-SWE/8/FT-P-0520-S
	6	2	1200	1200	7-1/2	2-7/16	9	5-78ZT-SWE/8/FT-P-0620-S
	8	2	1200	1200	9-1/2	2-7/16	10	5-78ZT-SWE/8/FT-P-0820-S
ELASTIC RUBBER / CAST IRON CORE (ER/CA) WHEELS WITH PRECISION BEARING								
	8	2	1200	500	9 1/2	2 7/16	60	5-78ZT-ER/CA-P-0820-S

*Add "B" for Ball Bearing, "P" for Precision Bearing, "PL" for Plain Bearing, "R" for Roller Bearing or "T" for Tapered Bearing.

For rigid casters, change "S" to "R" (i.e. 5-78ZT-PB-R-0415-S becomes 5-78ZT-PB-R-0415-R)

All Rig Options should be added to the end of the part number. (i.e. 5-78ZT-PB-R-0415-SL for Swivel Lock)

This Series is available with Swivel-SAZ™ (Dual-in-One) Wheels, Besthane®, Beathane® Soft, Extrathane® and Extrathane® Soft Wheels.

See Wheel Section for additional information. All load ratings are for manual operation at 2 mph.

**Also available in Flat Tread (70A, 80A, 95A and 60D) and Crown Tread (70A, 80A, 95A and 60D).